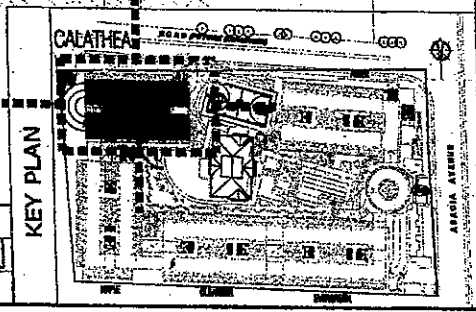


50 - COVERED PARKING SLOTS (P1)
 4 - MOTORCYCLE PARKING SLOTS (P1)

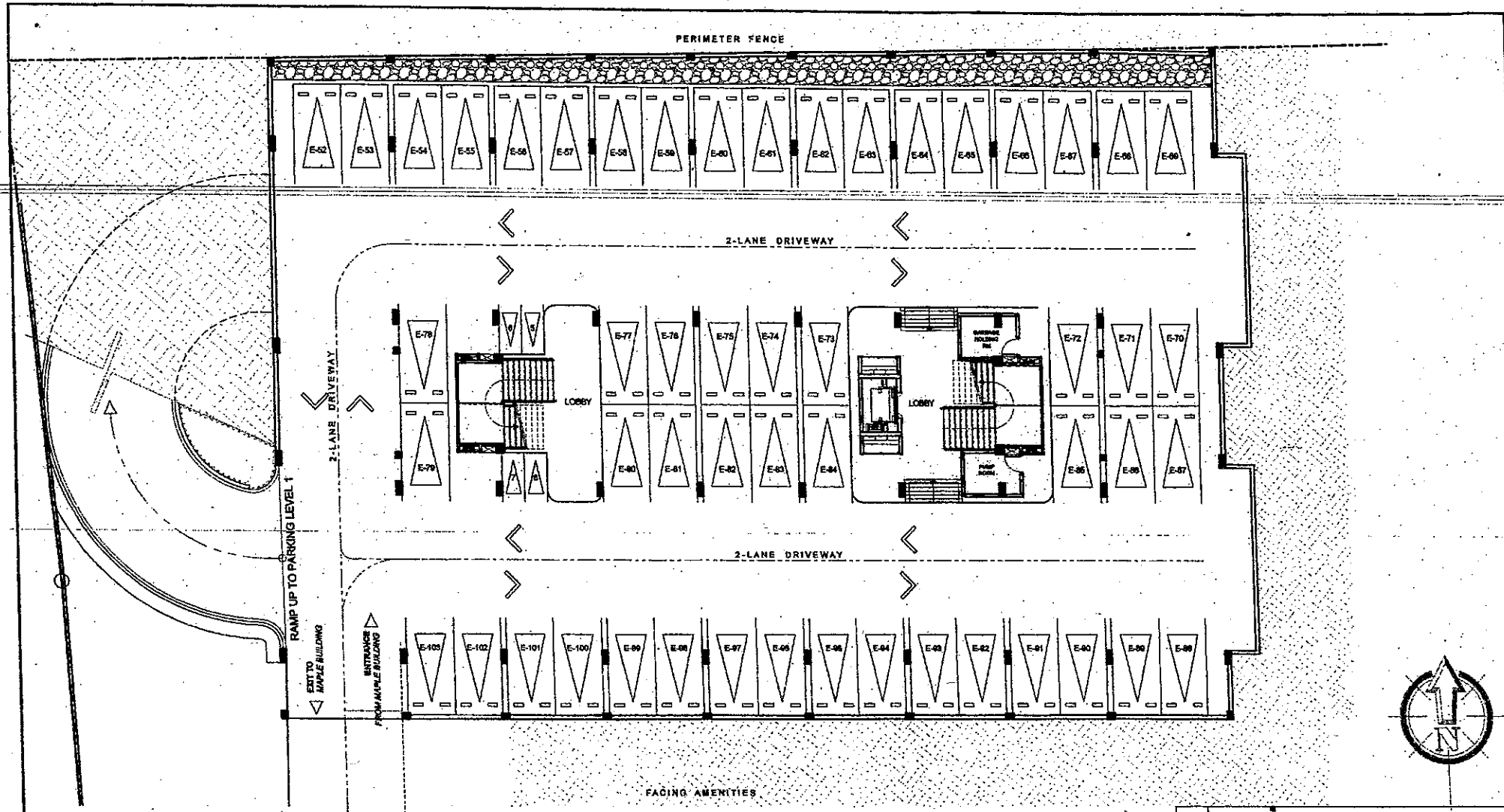
The Birchwood
CALATHEA
PARKING LEVEL 1 FLOOR PLAN
 OCTOBER 29, 2013

NO.	DATE	REVISIONS

NOTED BY:
 PAOLO
 RMS
 GSA



AVAILABILITY PLAN



52 - PARKING SLOTS (P2)
4 - MOTORCYCLE PARKING SLOTS (P2)

The Birchwood

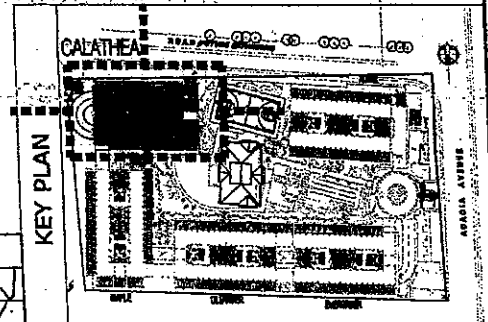
CALATHEA

PARKING LEVEL 2 FLOOR PLAN

OCTOBER 29, 2013

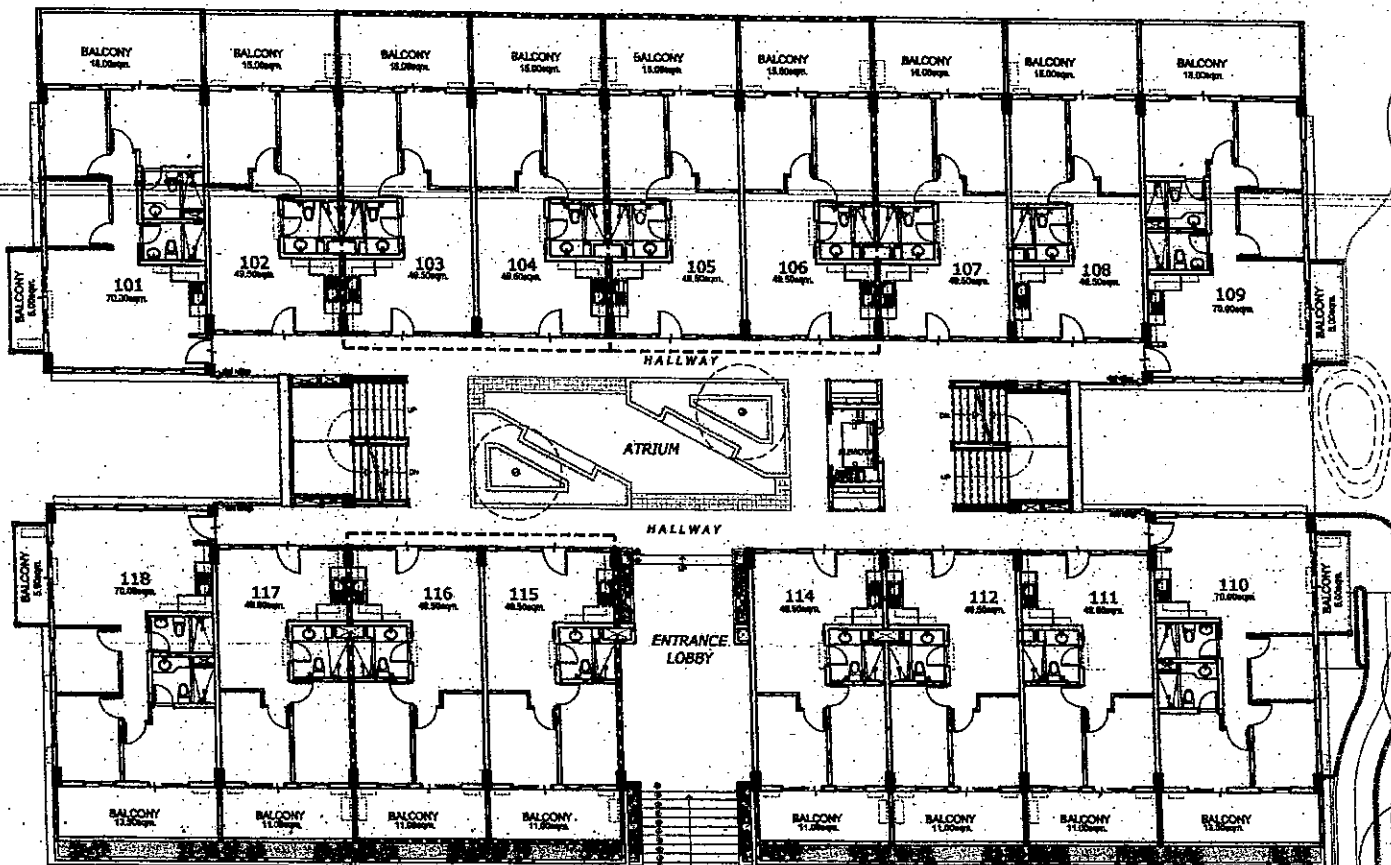


NO.	DATE	REVISIONS	PAOLO



AVAILABILITY PLAN

FRONTING TOWN CENTER



POSSIBLE TANDEM UNIT:

- 103 & 104
- 105 & 106
- 115 & 116

NOTE: SUBJECT TO CHANGE UPON AVAILABILITY OF UNITS AND STANDARD COMPANY POLICY REGARDING REQUEST FOR TANDEM.



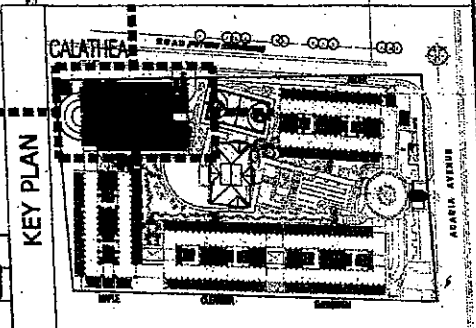
The Birchwood

CALATHEA

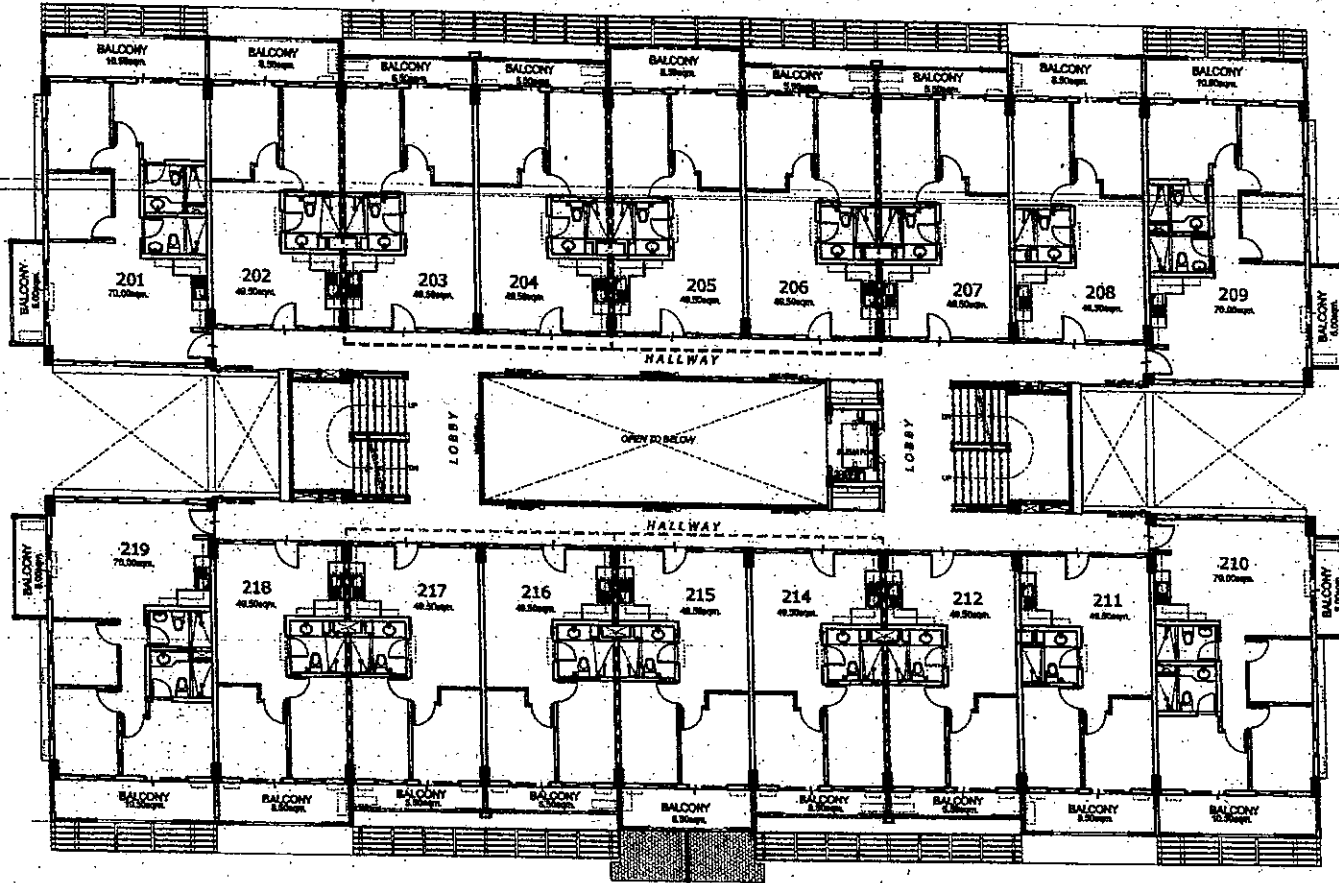
UPPER GROUND FLOOR PLAN

OCTOBER 29, 2013

NO.	DATE	REVISIONS	PAOLO



FRONTING TOWN CENTER



FRONTING AMENITIES

FRONTING AMENITIES

POSSIBLE TANDEM UNIT:

- 203 & 204
- 205 & 206
- 214 & 215
- 216 & 217

NOTE: SUBJECT TO CHANGE UPON AVAILABILITY OF UNITS AND STANDARD COMPANY POLICY REGARDING REQUEST FOR TANDEM.

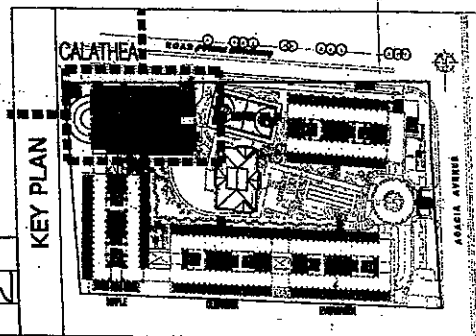


The Birchwood

CALATHEA
SECOND FLOOR PLAN
 OCTOBER 29, 2013

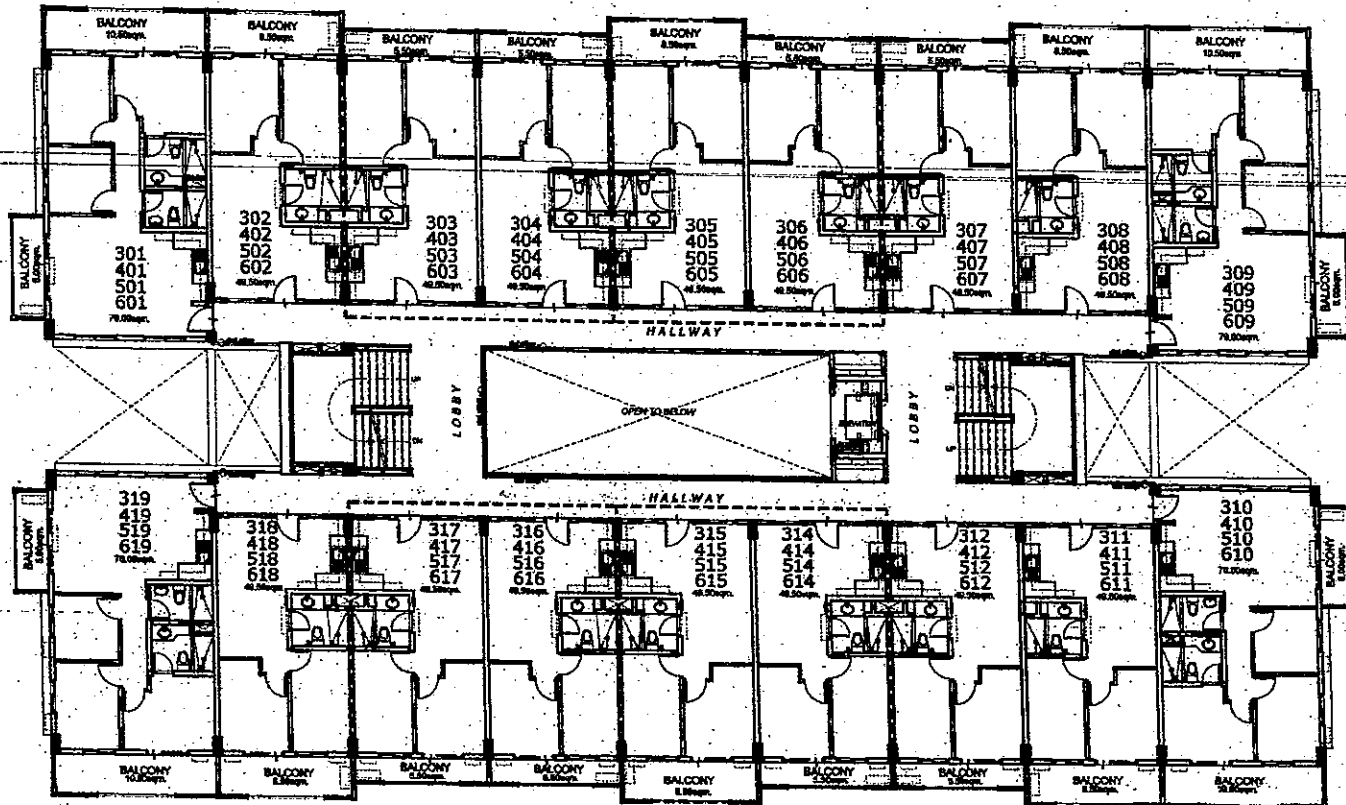
NO.	DATE	REVISIONS

PAOLO	<i>[Signature]</i>
RMS	<i>[Signature]</i>
GSA	<i>[Signature]</i>



AVATI ARTI TTY PI AN

FRONTING TOWN CENTER



FRONTING AMENITIES

POSSIBLE TANDEM UNIT:

- 303 & 304
- 305 & 306
- 314 & 315
- 316 & 317
- 403 & 404
- 405 & 406
- 414 & 415
- 416 & 417
- 503 & 504
- 505 & 506
- 514 & 515
- 516 & 517
- 603 & 604
- 605 & 606
- 614 & 615
- 616 & 617

NOTE: SUBJECT TO CHANGE UPON AVAILABILITY OF UNITS AND STANDARD COMPANY POLICY REGARDING REQUEST FOR TANDEM.



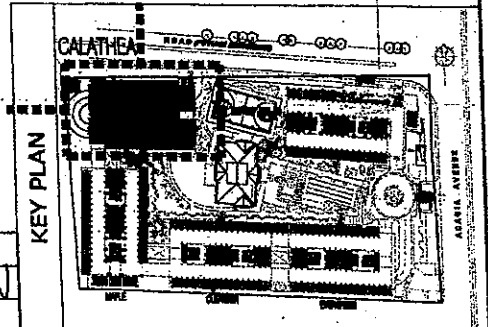
FRONTING AMENITIES

The Birchwood

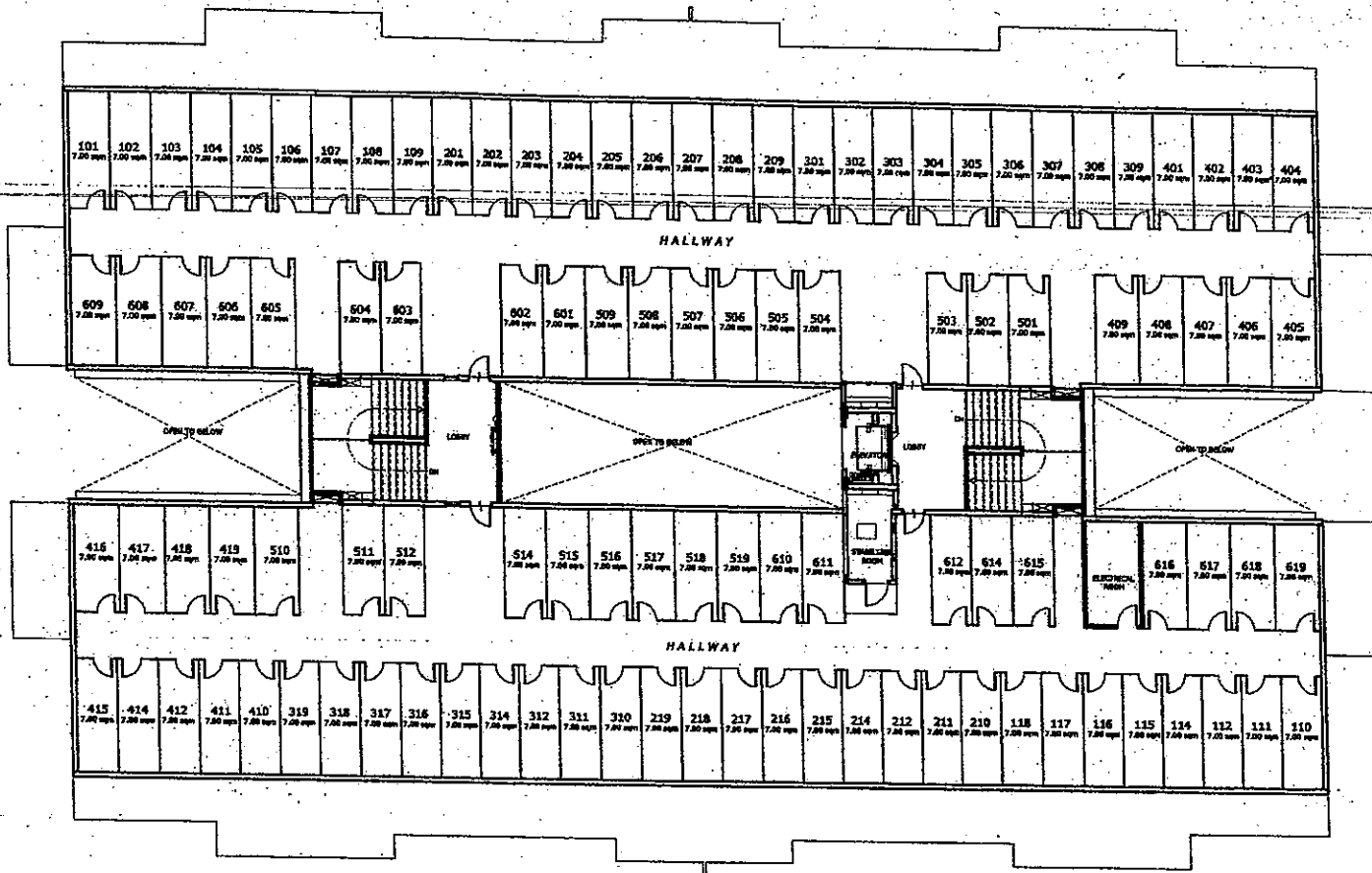
CALATHEA
3RD TO 6TH FLOOR PLAN
OCTOBER 29, 2013

NO.	DATE	REVISIONS

PAOLO
RMB
GSA



AVAILABILITY PLAN

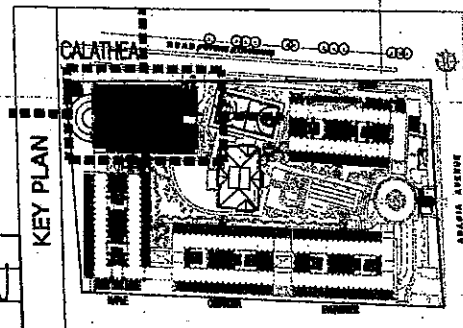


The Birchwood

CALATHEA
ROOF DECK PLAN
OCTOBER 29, 2013

NO.	DATE	REVISION

PAOLO
RMS
GSA



AVAILABILITY PLAN