

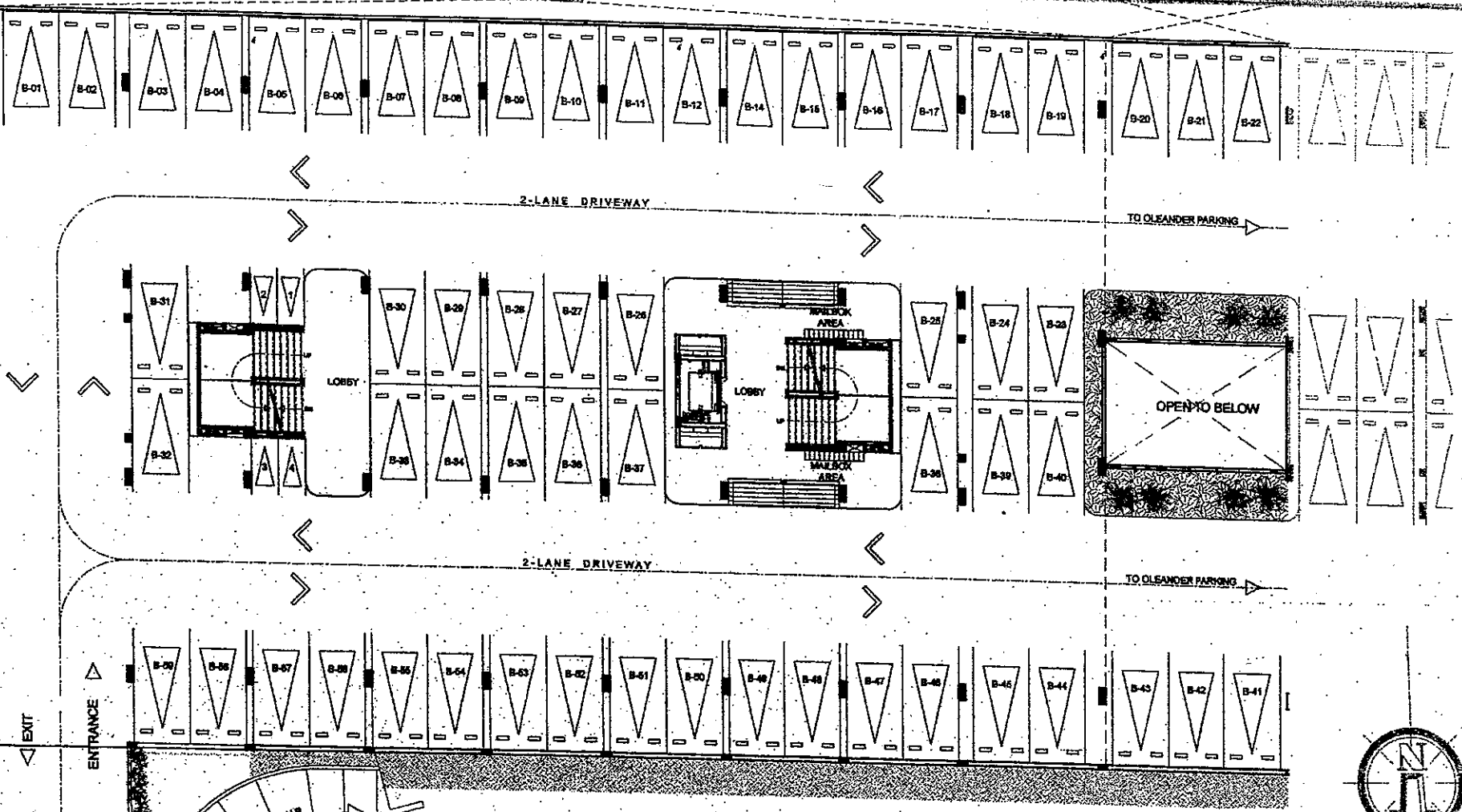
FRONTING ACACIA AVENUE

TO BASEMENT PARKING

OPEN TO BELOW

2-LANE DRIVEWAY

TO OLEANDER PARKING



EXIT

ENTRANCE

RAMP - UP

FRONTING AMENITIES

DROP-OFF/ROTONDA

- 58 - COVERED PARKING SLOTS (P1)
- 6 - OPEN PARKING SLOTS (P1)
- 4 - MOTORCYCLE PARKING SLOTS (P1)

*The Birchwood*  
**EVERGREEN**

**PARKING LEVEL 1 FLOOR PLAN**  
OCTOBER 08, 2013

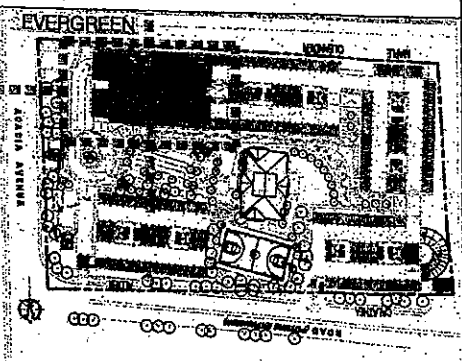


Feels real good to be home

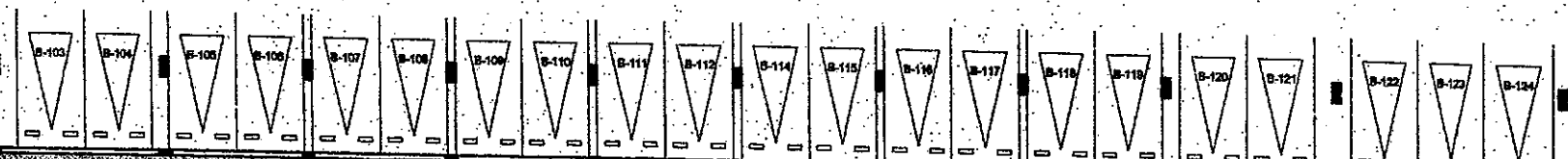
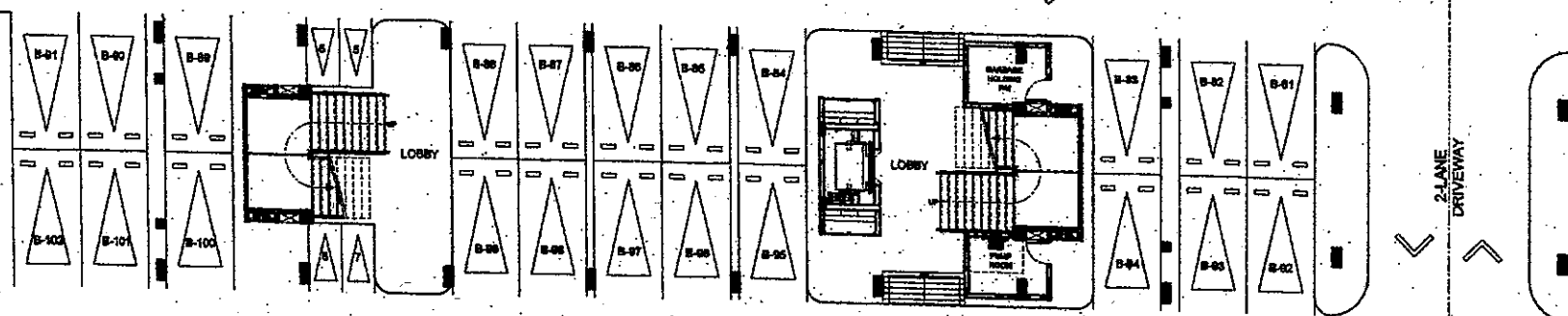
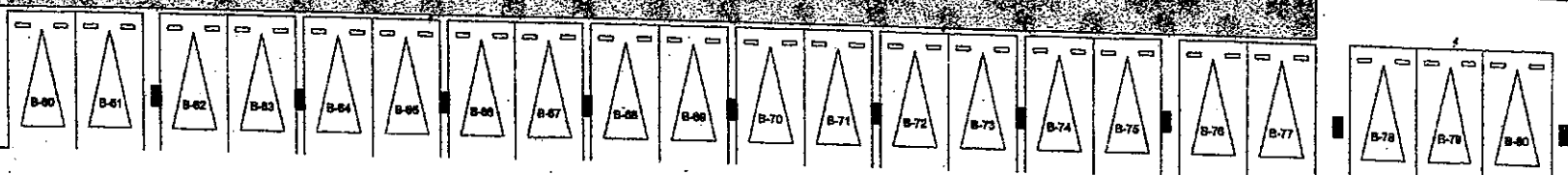
NO.	DATE	REVISIONS

PAOLO  
RMS  
GSA

KEY PLAN



PERIMETER FENCE



RAMPS UP TO DROP-OFF

TO OLEANDER PARKING

2-LANE DRIVEWAY

TO OLEANDER PARKING



FACING AMENITIES

64 - PARKING SLOTS (P2)  
4 - MOTORCYCLE PARKING SLOTS (P2)

The Birchwood

EVERGREEN

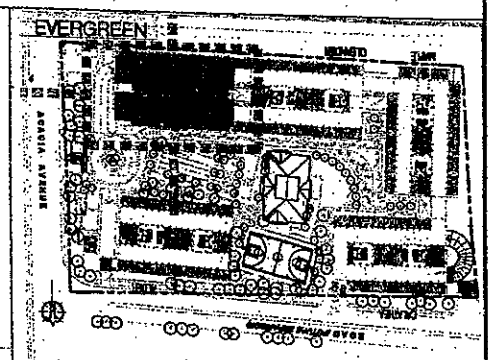
PARKING LEVEL 2 FLOOR PLAN  
OCTOBER 08, 2013



NO.	DATE	REVISIONS

PAOLO  
RMS  
GSA

KEY PLAN

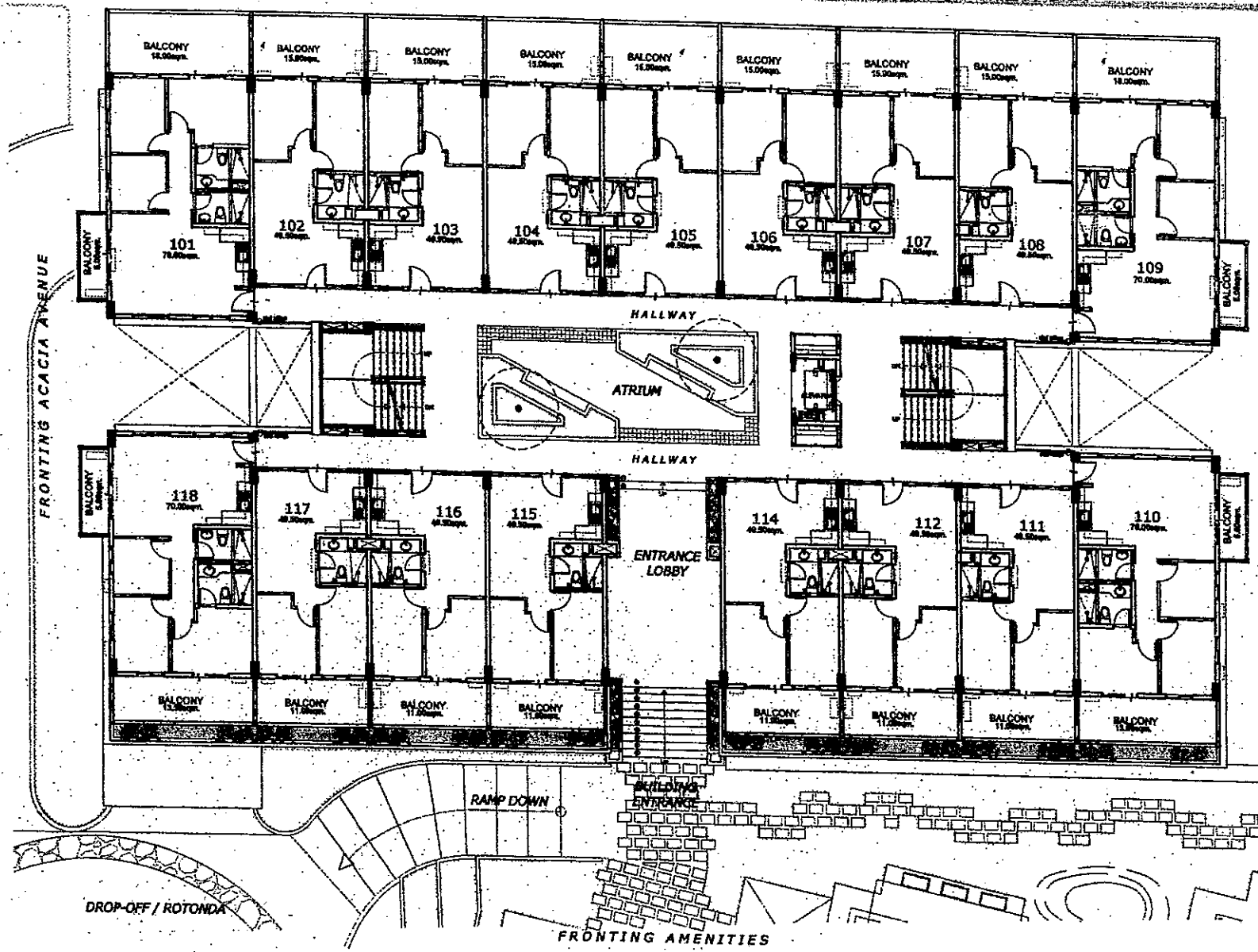


AVANTI ARTI TV DI AN

POSSIBLE TANDEM UNIT:

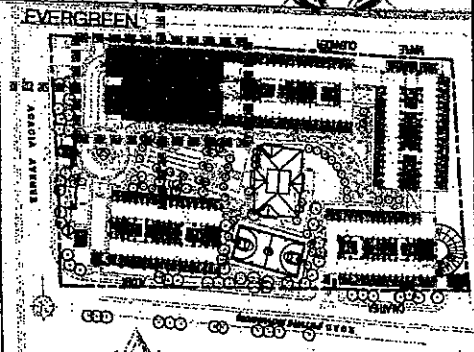
- 103 & 104
- 105 & 106
- 115 & 116
- 203 & 204
- 205 & 206
- 214 & 215
- 216 & 217
- 303 & 304
- 305 & 306
- 314 & 315
- 316 & 317
- 403 & 404
- 405 & 406
- 414 & 415
- 416 & 417
- 503 & 504
- 505 & 506
- 514 & 515
- 516 & 517
- 603 & 604
- 605 & 606
- 614 & 615
- 616 & 617

NOTE: SUBJECT TO CHANGE UPON AVAILABILITY OF UNITS AND STANDARD COMPANY POLICY REGARDING REQUEST FOR TANDEM.



FRONTING OLEANDER BUILDING

FRONTING ACACIA AVENUE



KEY PLAN



*The Birchwood*  
**EVERGREEN**  
UPPER GROUND FLOOR PLAN  
OCTOBER 08, 2013

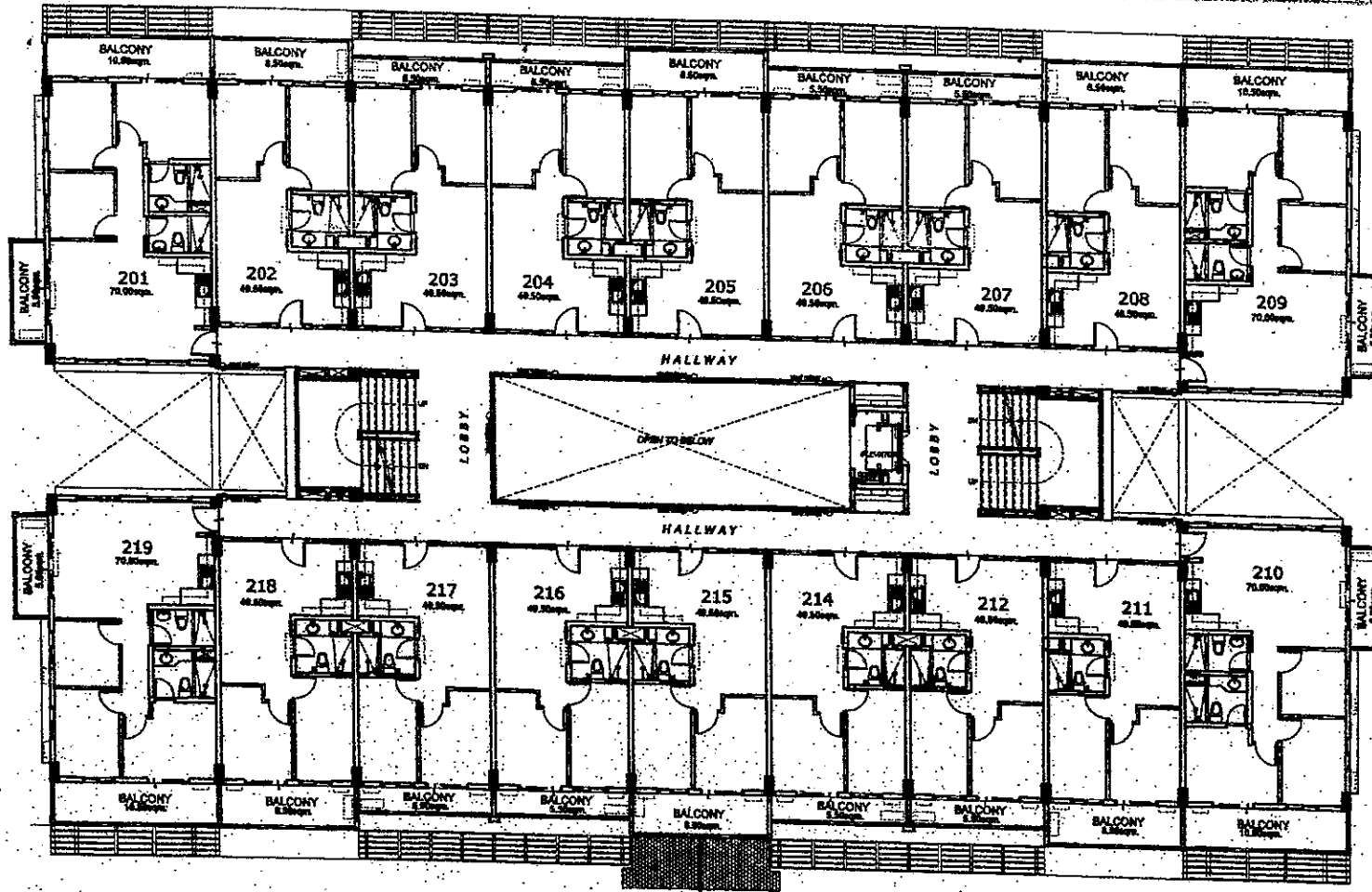
NO.	DATE	REVISIONS

NOTED BY: PAOLO [Signature]  
RMS [Signature]  
GSA [Signature]

FRONTING ACACIA AVENUE

FRONTING OLEANDER

FRONTING AMENITIES



POSSIBLE TANDEM UNIT:

- 103 & 104
- 105 & 106
- 115 & 116
- 203 & 204
- 205 & 206
- 214 & 215
- 216 & 217
- 303 & 304
- 305 & 306
- 314 & 315
- 316 & 317
- 403 & 404
- 405 & 406
- 414 & 415
- 416 & 417
- 503 & 504
- 505 & 506
- 514 & 515
- 516 & 517
- 603 & 604
- 605 & 606
- 614 & 615
- 616 & 617



NOTE: SUBJECT TO CHANGE UPON AVAILABILITY OF UNITS AND STANDARD COMPANY POLICY REGARDING REQUEST FOR TANDEM.

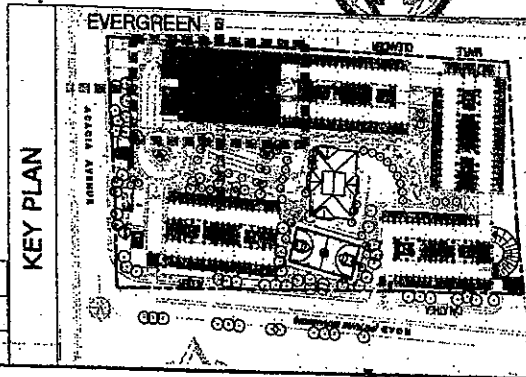


The Birchwood

EVERGREEN  
SECOND FLOOR PLAN  
OCTOBER 08, 2013



NO.	DATE	REVISIONS	PAOLO
			<i>[Signature]</i>
			RMS
			GSA



KEY PLAN

AVAILABILITY PLAN

FRONTING ACACIA AVENUE

FRONTING OLEANDER

FRONTING AMENITIES



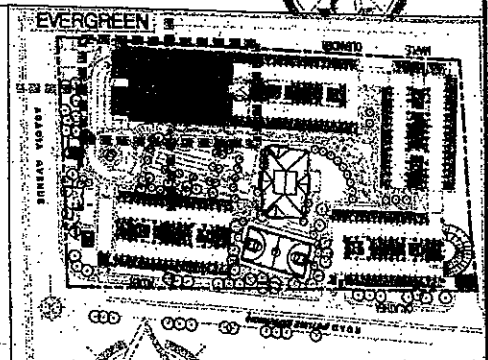
The Birchwood

EVERGREEN  
3RD TO 6TH FLOOR PLAN  
OCTOBER 08, 2013

NO.	DATE	REVISIONS

PAOLO  
RMS  
GSA

KEY PLAN

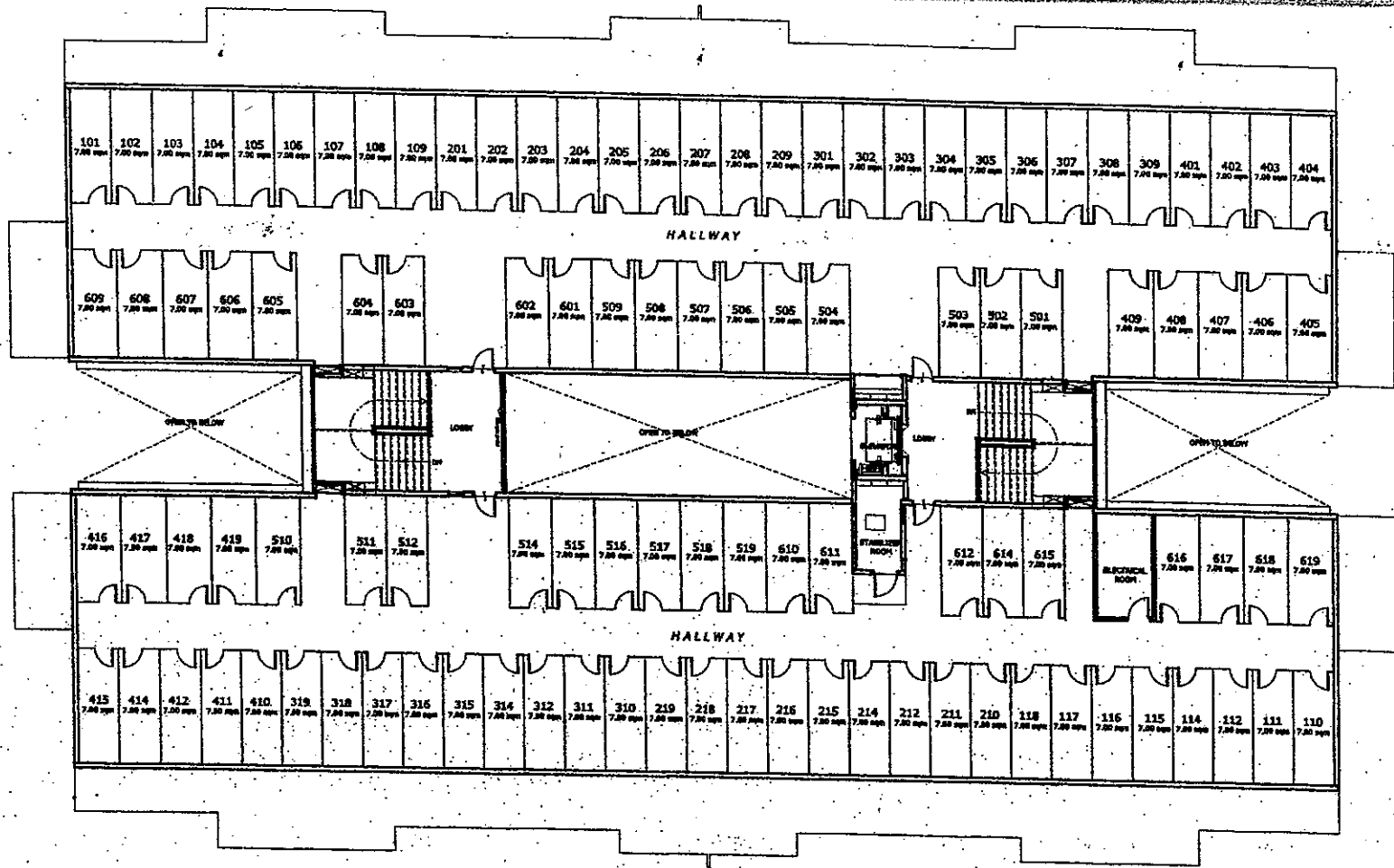


AVANTI ARTI TV DIAMI

POSSIBLE TANDEM UNIT:

- 103 & 104
- 105 & 106
- 115 & 116
- 203 & 204
- 205 & 206
- 214 & 215
- 216 & 217
- 303 & 304
- 305 & 306
- 314 & 315
- 316 & 317
- 403 & 404
- 405 & 406
- 414 & 415
- 416 & 417
- 503 & 504
- 505 & 506
- 514 & 515
- 516 & 517
- 603 & 604
- 605 & 606
- 614 & 615
- 616 & 617

NOTE: SUBJECT TO CHANGE UPON AVAILABILITY OF UNITS AND STANDARD COMPANY POLICY REGARDING REQUEST FOR TANDEM.



*The Birchwood*

**EVERGREEN**

**ROOF DECK PLAN**

OCTOBER 08, 2013



NO.	DATE	REVISIONS

PAOLO  
RMS  
GSA

KEY PLAN

