

- 52 - COVERED PARKING SLOTS (P1)
- 8 - *OPEN PARKING SLOTS (P1)
- 4 - MOTORCYCLE PARKING SLOTS (P1)



The Birchwood

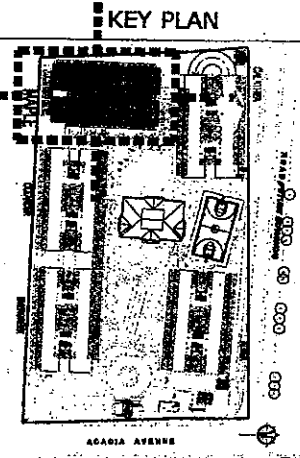
MAPLE

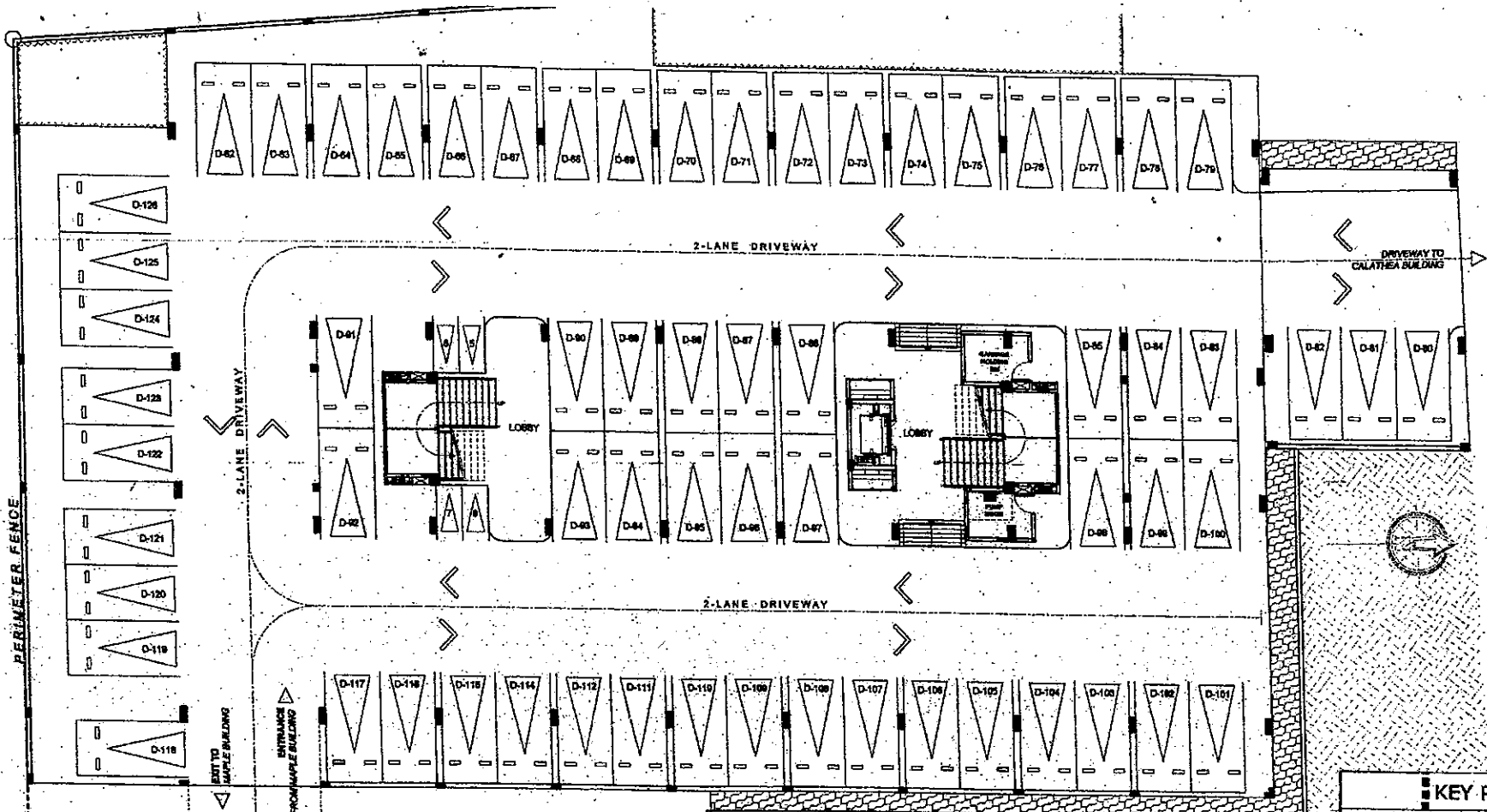
PARKING LEVEL 1 FLOOR PLAN

OCTOBER 30, 2013

NO.	DATE	REVISIONS

PAOLO	<i>[Signature]</i>
RMS	<i>[Signature]</i>
GSA	<i>[Signature]</i>





64 - PARKING SLOTS (P2)
4 - MOTORCYCLE PARKING SLOTS (P2)

CLEANER BUILDING
PARKING LEVEL 2

FACING AMENITIES



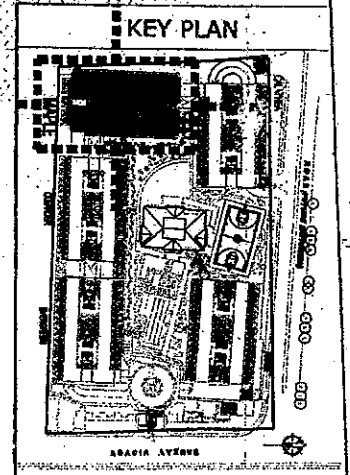
MAPLE

PARKING LEVEL 2 FLOOR PLAN
NOVEMBER 25, 2013



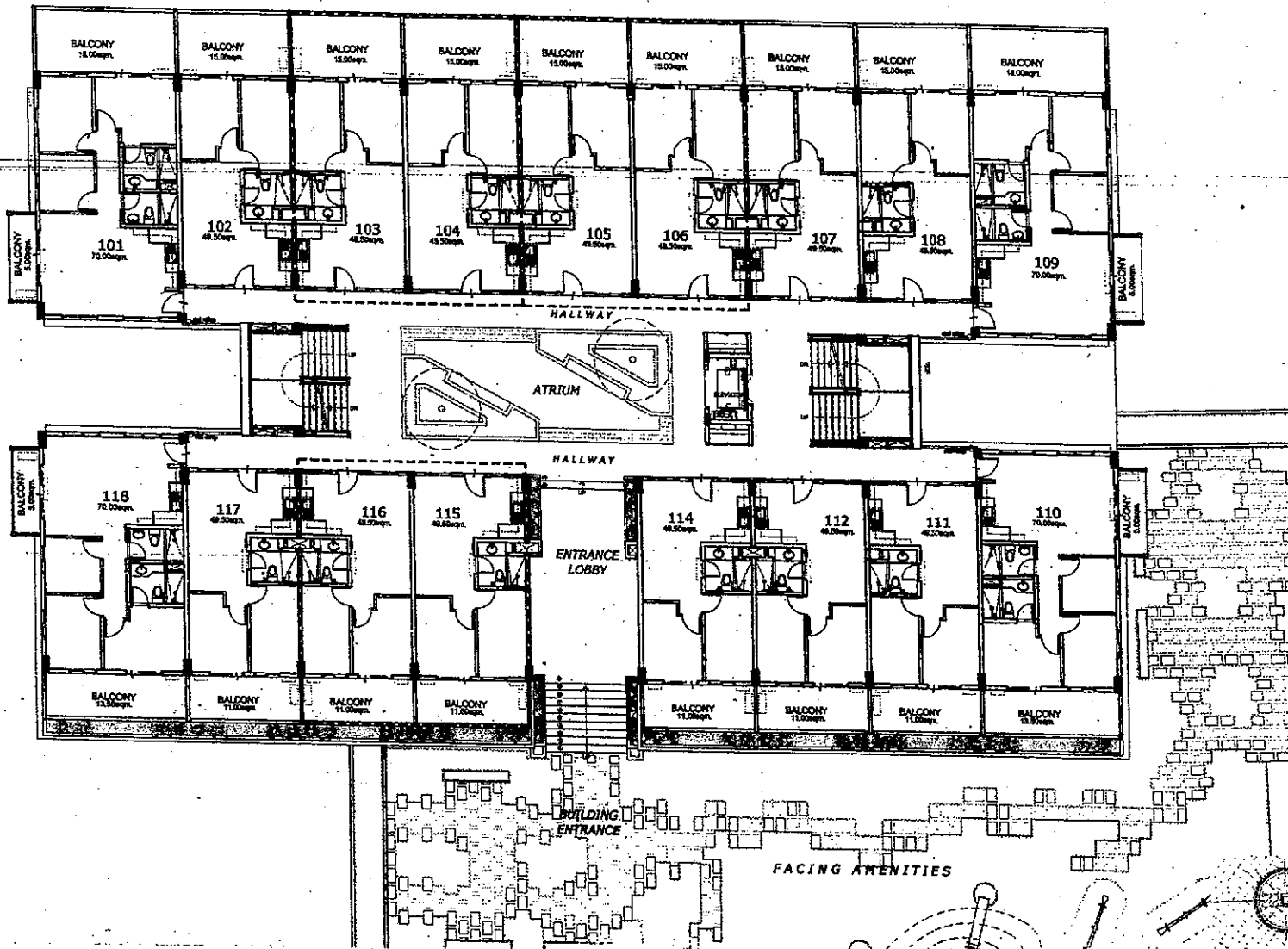
NO.	DATE	REVISIONS
1		ISSUED FOR CONSTRUCTION

PAOLO	<i>[Signature]</i>
RMS	
GSA	



AVAILABILITY PLAN

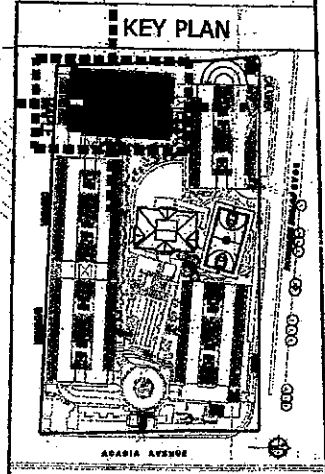
FRONTING TOWN CENTER



POSSIBLE TANDEM UNIT:

- 103 & 104
- 105 & 106.
- 115 & 116

NOTE: SUBJECT TO CHANGE UPON AVAILABILITY OF UNITS AND STANDARD COMPANY POLICY REGARDING REQUEST FOR TANDEM.

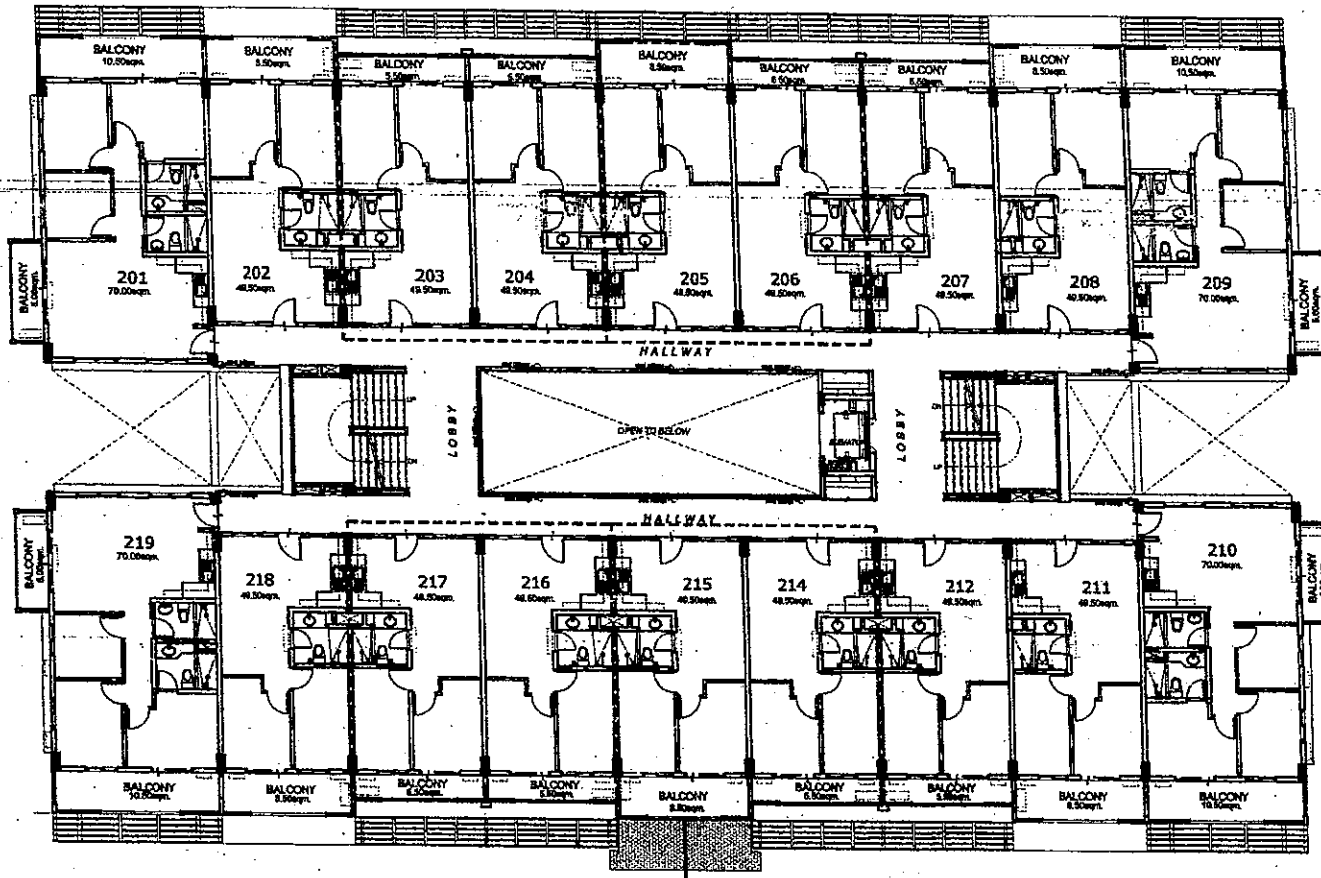


The Birchwood

MAPLE
UPPER GROUND FLOOR PLAN
OCTOBER 30, 2013

NO.	DATE	REVISIONS

NOTED BY:	PAOLO	<i>[Signature]</i>
	RMS	<i>[Signature]</i>
	GSA	<i>[Signature]</i>



POSSIBLE TANDEM UNIT:

- 203 & 204
- 205 & 206
- 214 & 215
- 216 & 217

NOTE: SUBJECT TO CHANGE UPON AVAILABILITY OF UNITS AND STANDARD COMPANY POLICY REGARDING REQUEST FOR TANDEM.

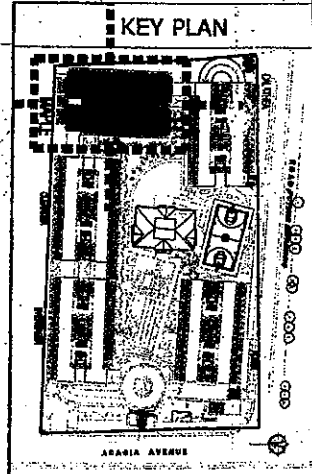
FACING AMENITIES

The Birchwood

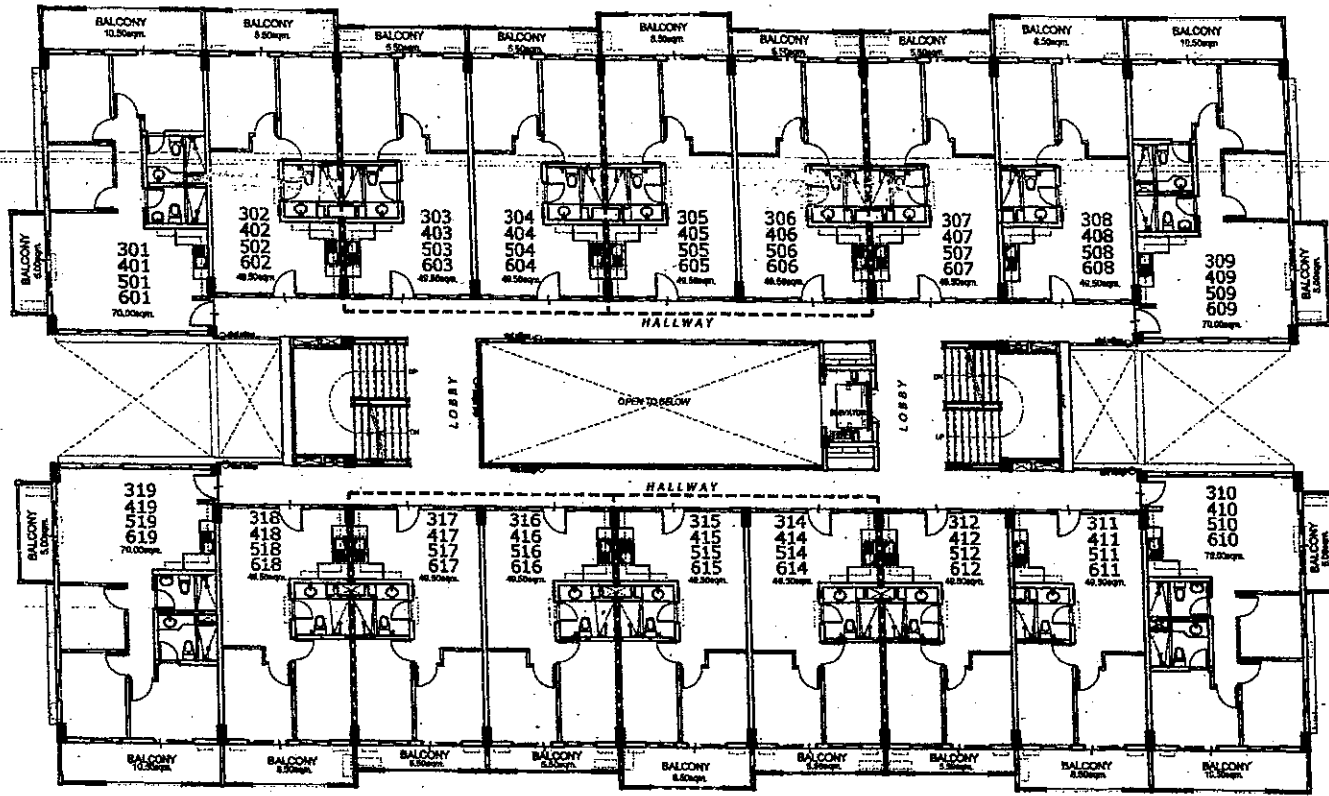
MAPLE
SECOND FLOOR PLAN
 OCTOBER 30, 2013

NO.	DATE	REVISIONS

PAOLO	<i>[Signature]</i>
RMB	<i>[Signature]</i>
GSA	<i>[Signature]</i>



AVATI ARTI TTY PI AN



POSSIBLE TANDEM UNIT:

- 303 & 304
- 305 & 306
- 314 & 315
- 316 & 317
- 403 & 404
- 405 & 406
- 414 & 415
- 416 & 417
- 503 & 504
- 505 & 506
- 514 & 515
- 516 & 517
- 603 & 604
- 605 & 606
- 614 & 615
- 616 & 617

NOTE: SUBJECT TO CHANGE UPON AVAILABILITY OF UNITS AND STANDARD COMPANY POLICY REGARDING REQUEST FOR TANDEM.

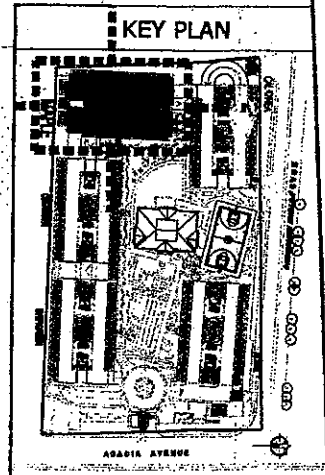
FACING AMENITIES

The Birchwood

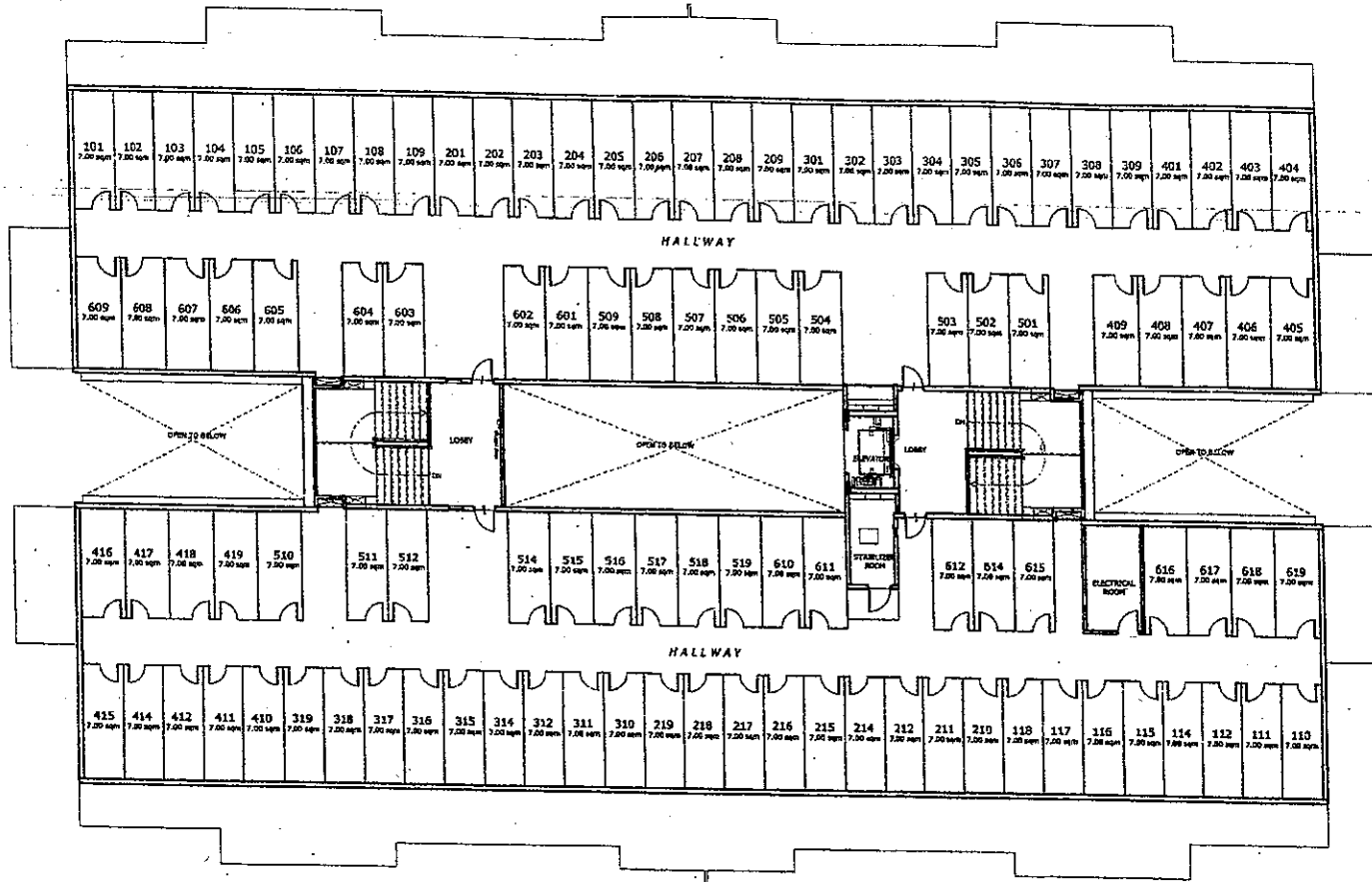
MAPLE
3RD TO 6TH FLOOR PLAN
OCTOBER 30, 2013

NO.	DATE	REVISIONS

PAOLO	<i>[Signature]</i>
RMS	<i>[Signature]</i>
GSA	<i>[Signature]</i>



AVATI ARTI TTY PLAN

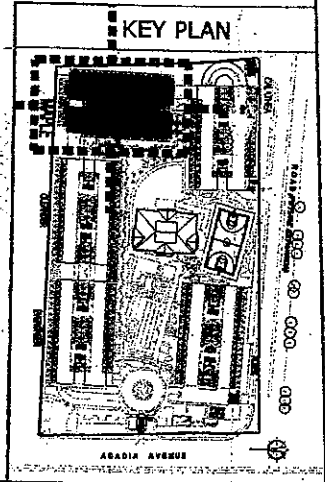


The Birchwood

MAPLE
ROOF DECK PLAN
 OCTOBER 30, 2013

NO.	DATE	REVISIONS

NOTED BY:	PACLO	<i>[Signature]</i>
	RMS	<i>[Signature]</i>
	GSA	<i>[Signature]</i>



AVAILABILITY PLAN