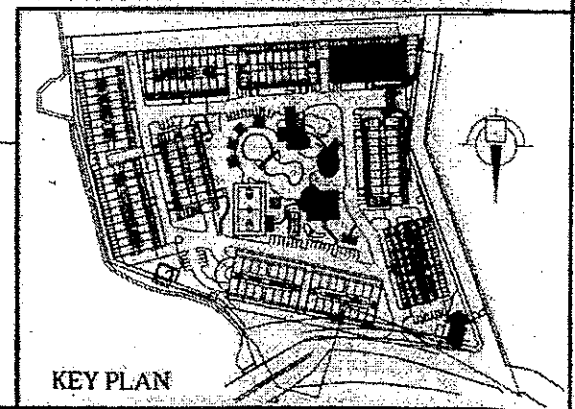
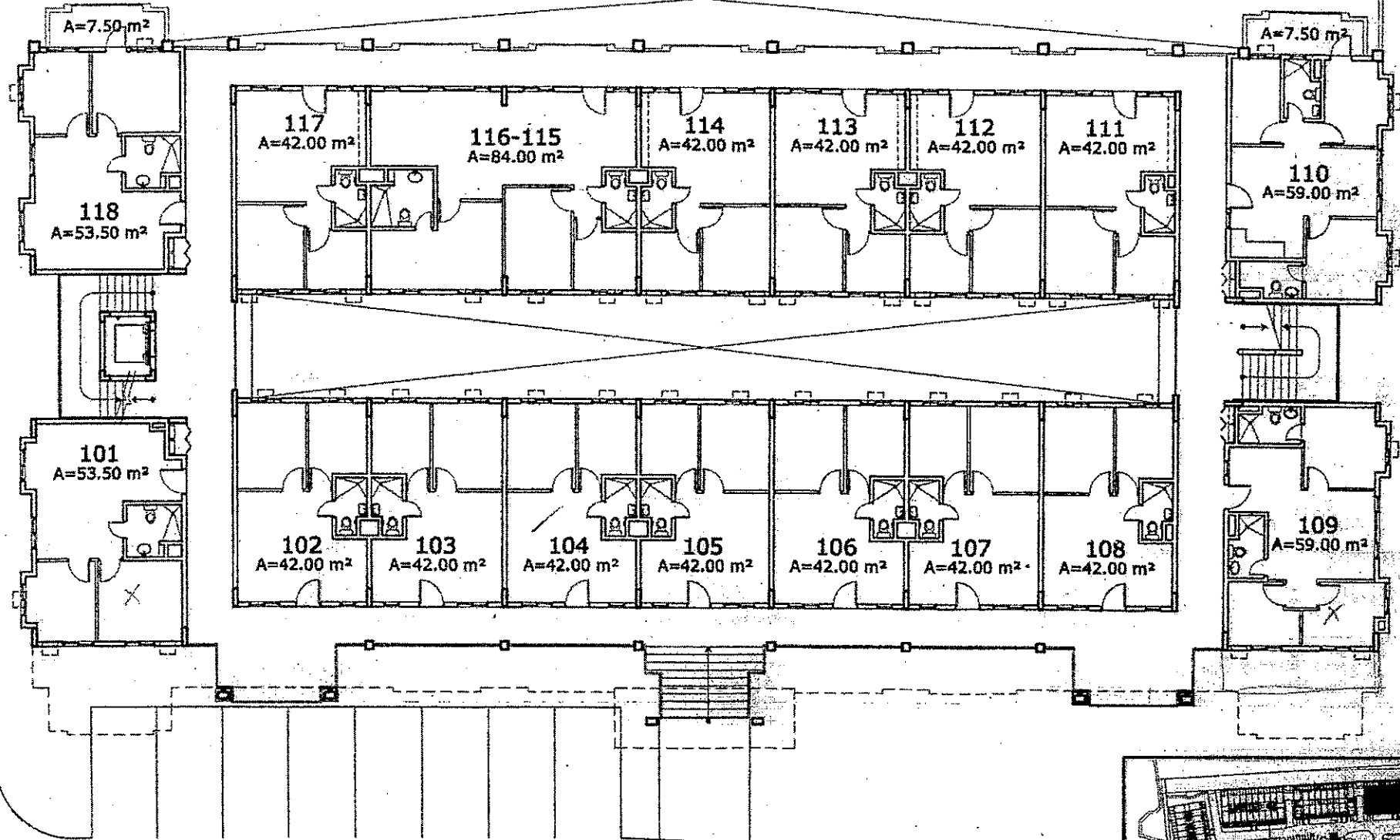


**D.M. CONSUNJI, INC.**  
 ENGINEERS · CONTRACTORS  
 2281 AASONG TAMO EXTENSION, MAKATI CITY  
 TEL. NO.: 841-0841

*Rosewood Pointe*  
**BLDG. A - LOWER GROUND FLOOR PLAN**  
 20 OCTOBER 2006

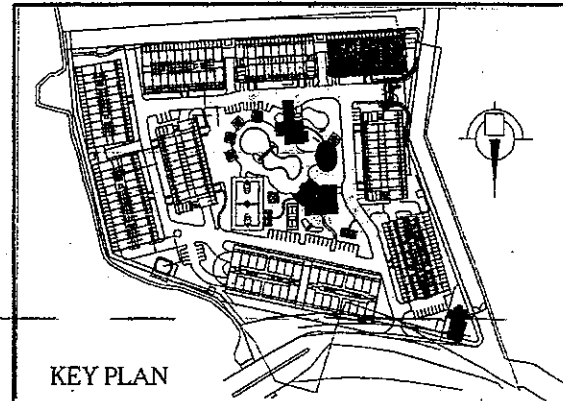
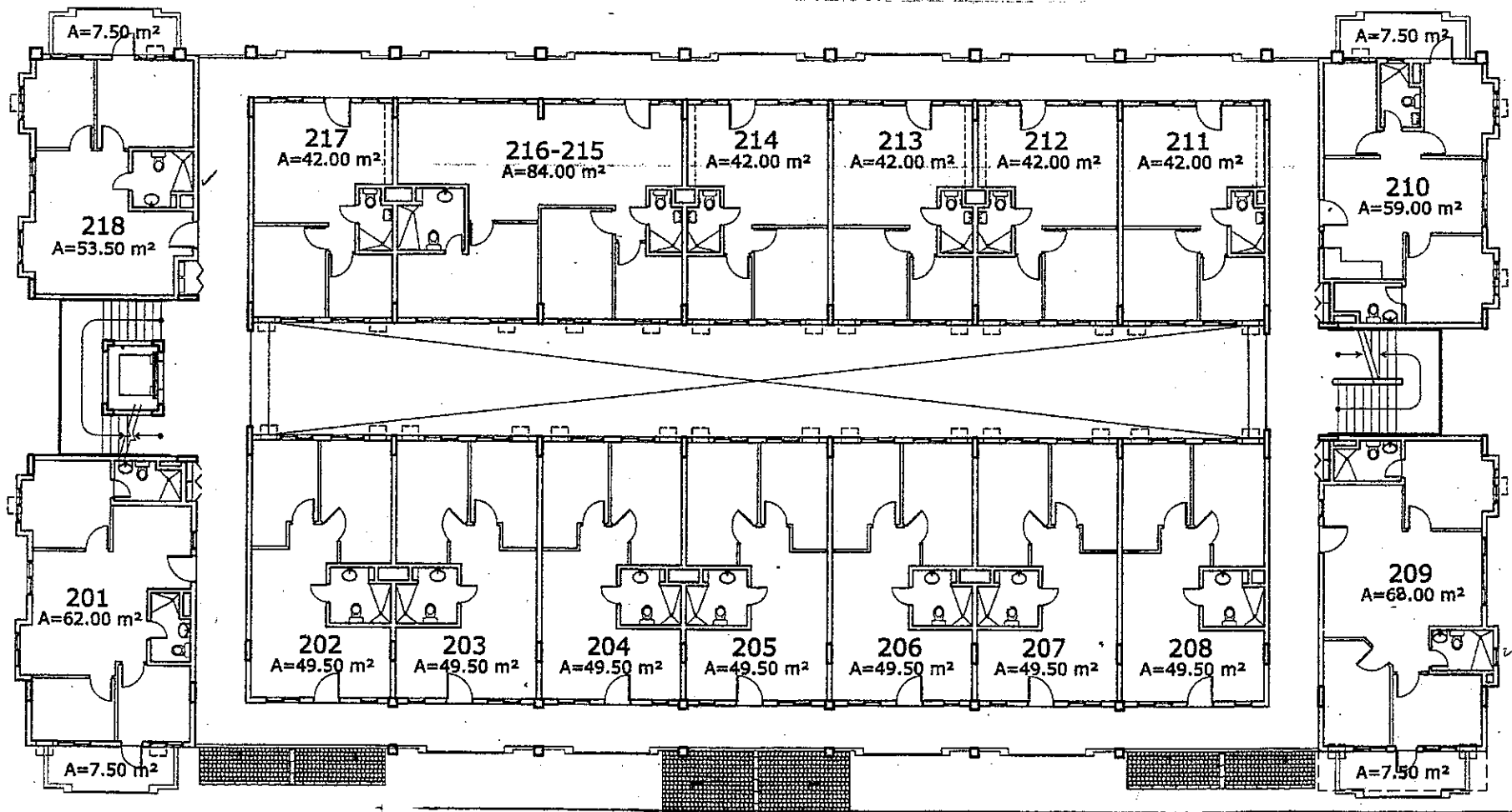
*gbrn arr*

KEY PLAN



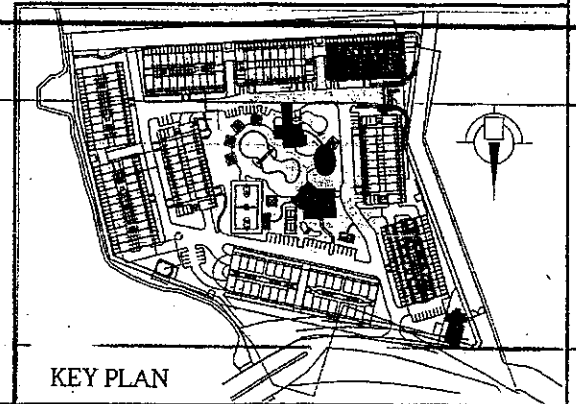
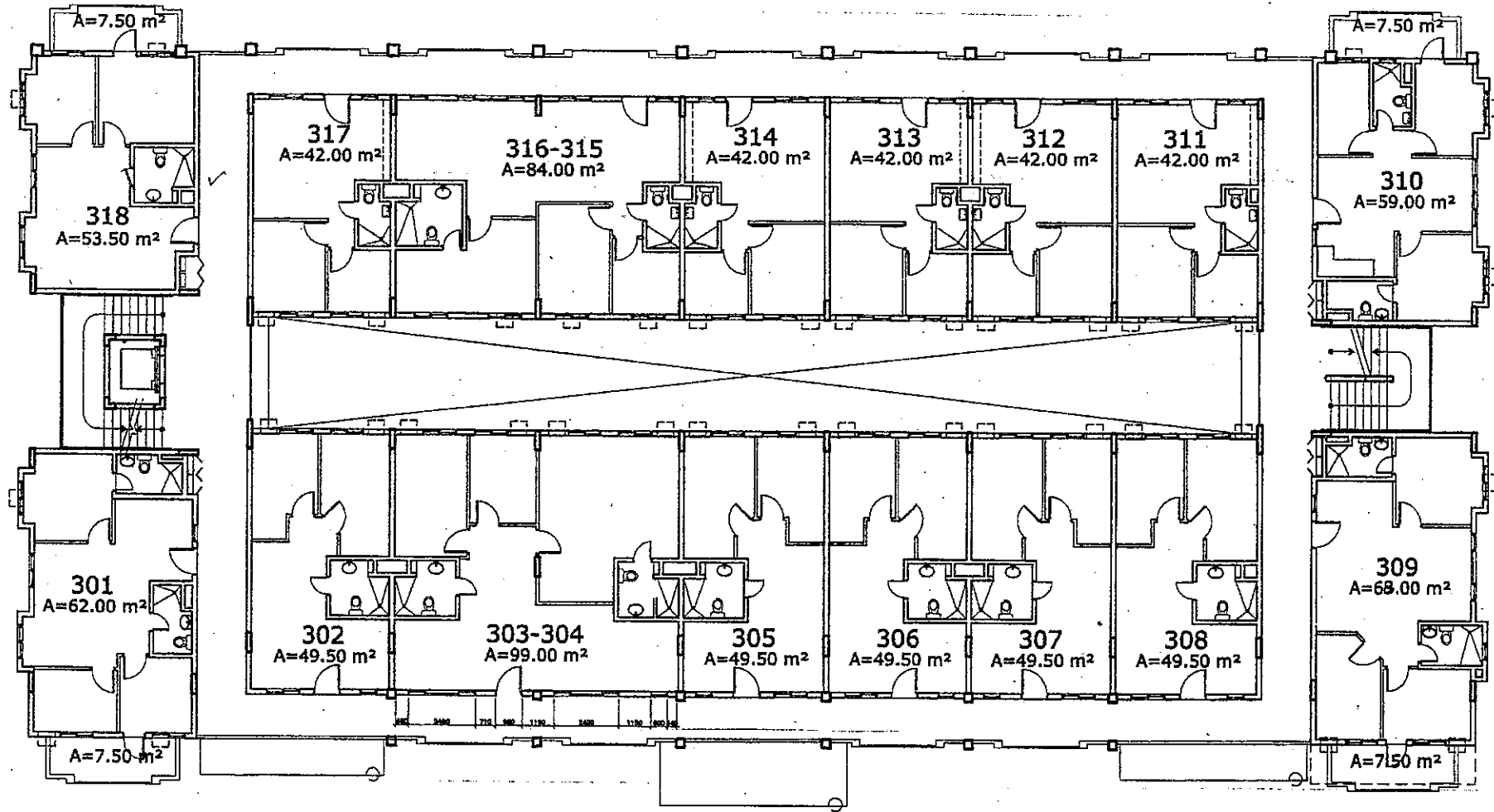
**D.M. CONSUNJI, INC.**  
 ENGINEERS - CONTRACTORS  
 2201 AASONG TANO EXTENSION, MAKATI CITY  
 TEL. NO.: 841-0841

*Rosewood Pointe*  
**BLDG. A - UPPER GROUND FLOOR PLAN**  
 13 MARCH 2006 *ayj gbn*



**D.M. CONSUNJI, INC.**  
 ENGINEERS • CONTRACTORS  
 2281 AASONG TAMO EXTENSION, MAKATI CITY  
 TEL. NO.: 841-0841

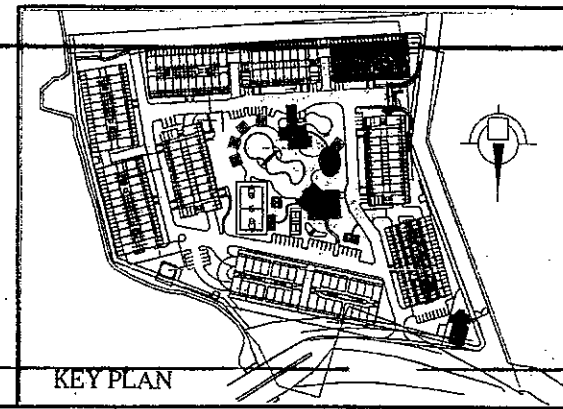
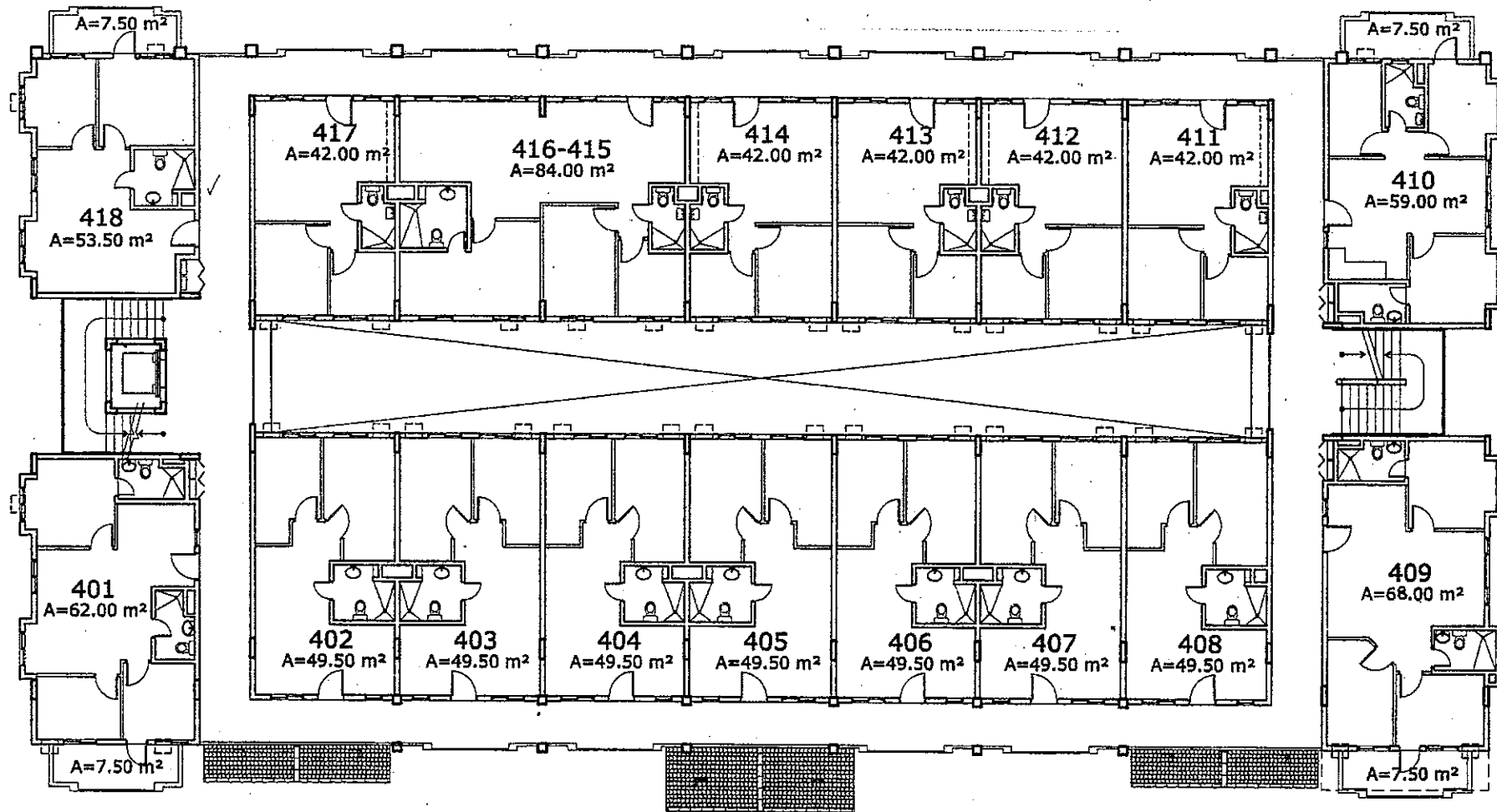
*Rosewood Point*  
**BLDG. A - SECOND FLOOR PLAN**  
 13 MARCH 2006 *AMY SWSN*



**D.M. CONSUNJI, INC.**  
 ENGINEERS • CONTRACTORS  
 2281 AASONG TAMO EXTENSION, MAKATI CITY  
 TEL. NO.: 841-0841

*Rosewood Pointe*  
**BLDG. A - THIRD FLOOR PLAN**  
 13 MARCH 2006 *atg* *Ellen*

KEY PLAN



*Rosewood Pointe*  
 BLDG. A - FOURTH FLOOR PLAN

13 MARCH 2006

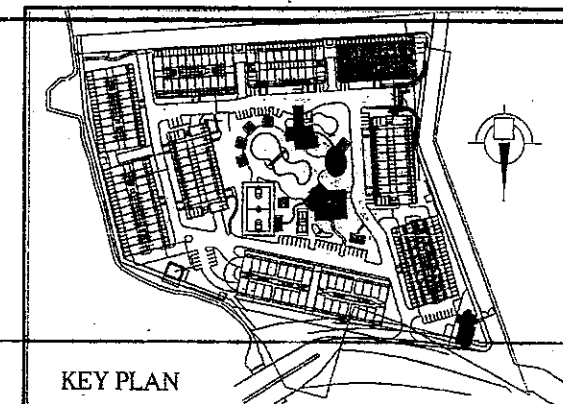
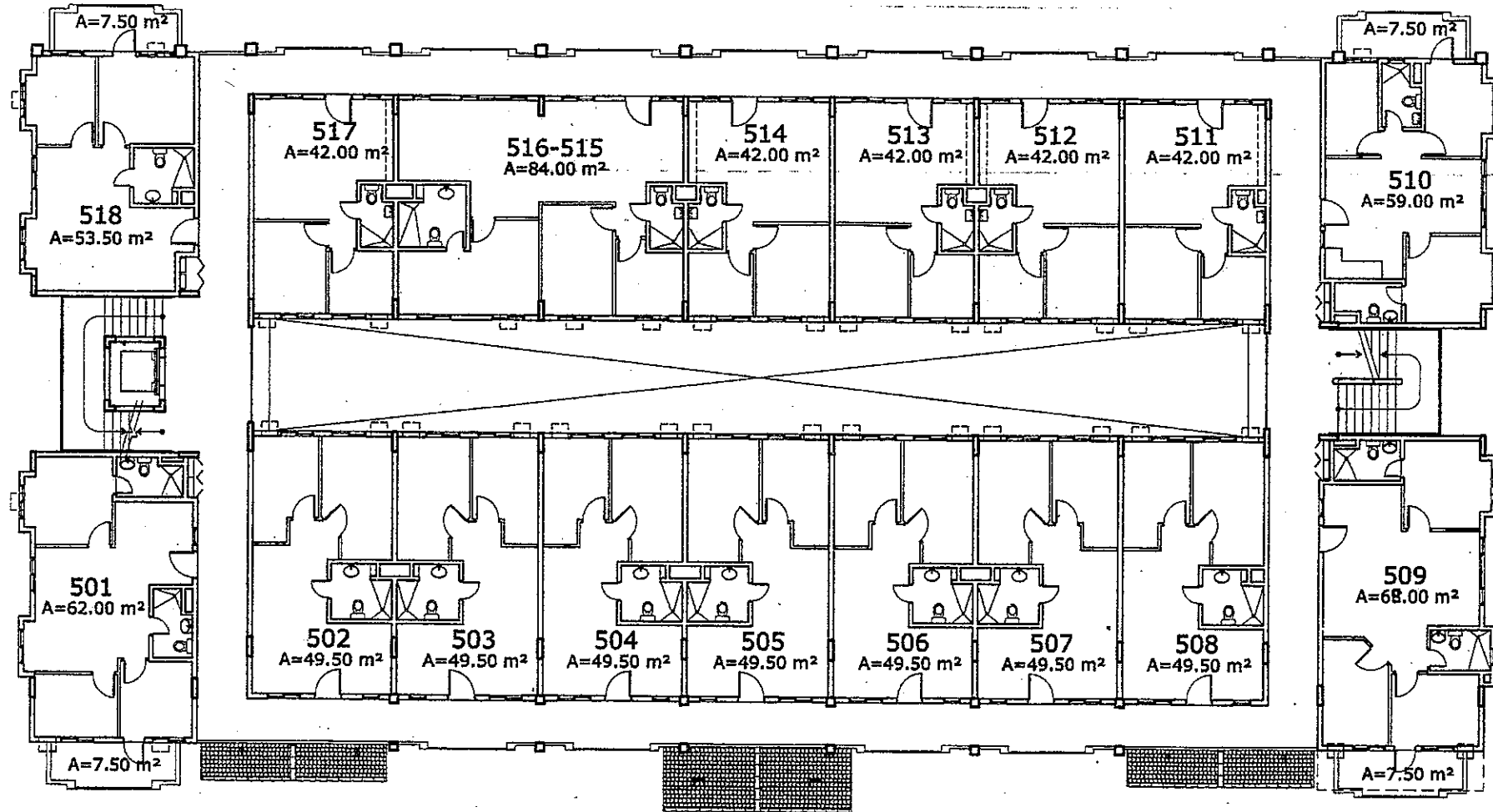


**D.M. CONSUNJI, INC.**

ENGINEERS - CONTRACTORS

2281 AASONG TAMO EXTENSION, MAKATI CITY  
 TEL. NO.: 841-0841

*Handwritten initials and signature*



**D.M. CONSUNJI, INC.**  
 ENGINEERS • CONTRACTORS  
 2281 AASONG TAMO EXTENSION, MAKATI CITY  
 TEL. NO.: 841-0841

*Rosewood Pointe*  
**BLDG. A - FIFTH FLOOR PLAN**

13 MARCH 2006 *all*

KEY PLAN