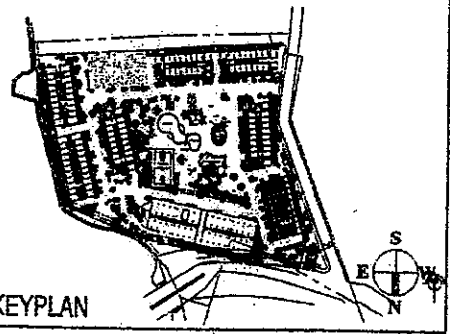
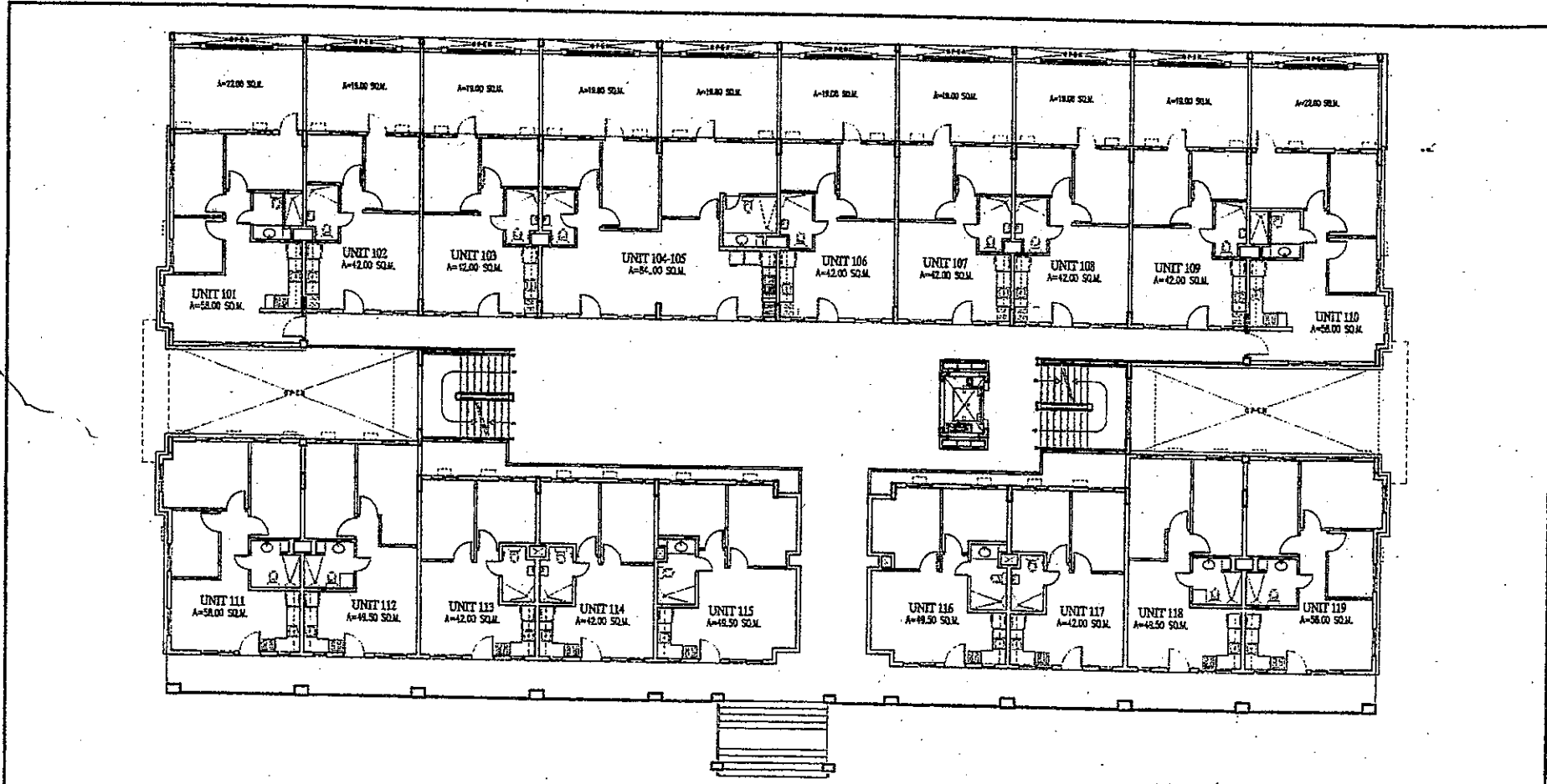


D.M. CONSUNJI, INC.
 ENGINEERS - CONTRACTORS
 2281 PASONG TAND EXTENSION, MAKATI CITY
 TEL. NO.: 841-0841

Rosewood Pointe
BLDG. C - LOWER GROUND FLOOR PLAN
 20 SEPTEMBER 2006

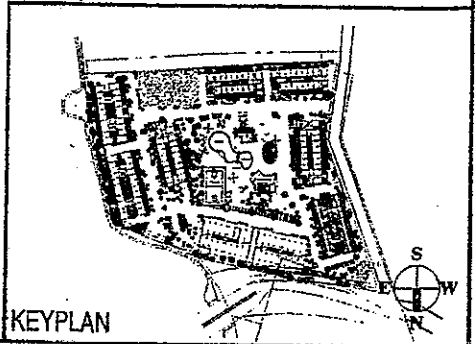


KEYPLAN

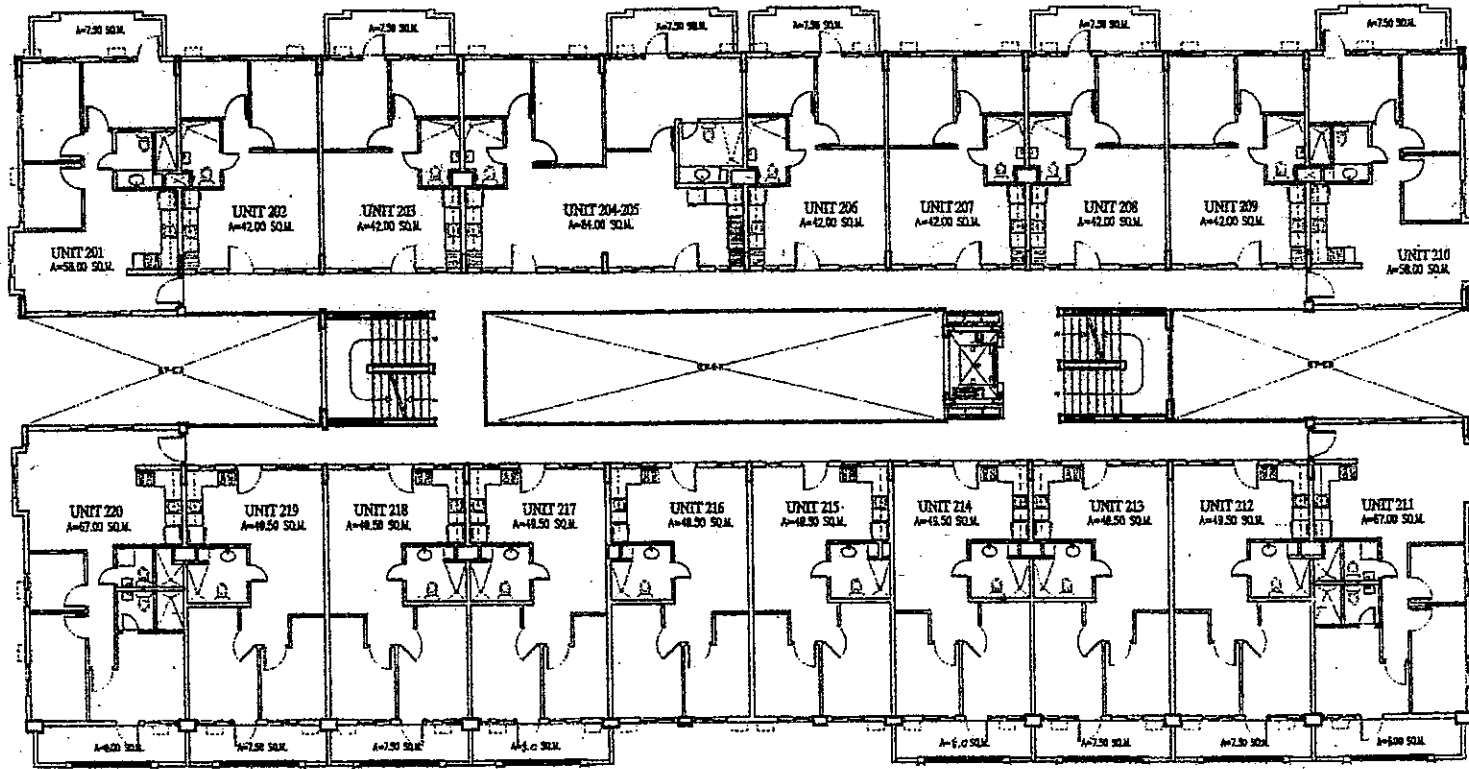


D.M. CONSUNJI, INC.
 ENGINEERS • CONTRACTORS
 2281 PASONG TAMA EXTENSION, MAKATI CITY
 TEL. NO.: 841-0841

Rosewood Pointe
BLDG. C - UPPER GROUND FLOOR PLAN
 03 OCTOBER 2006

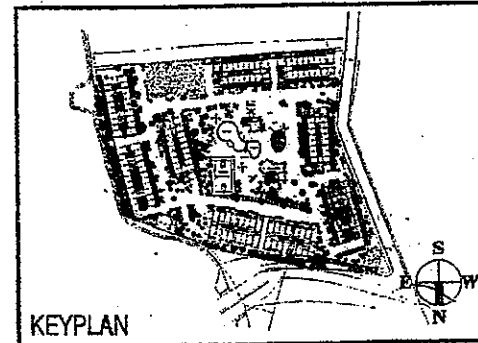


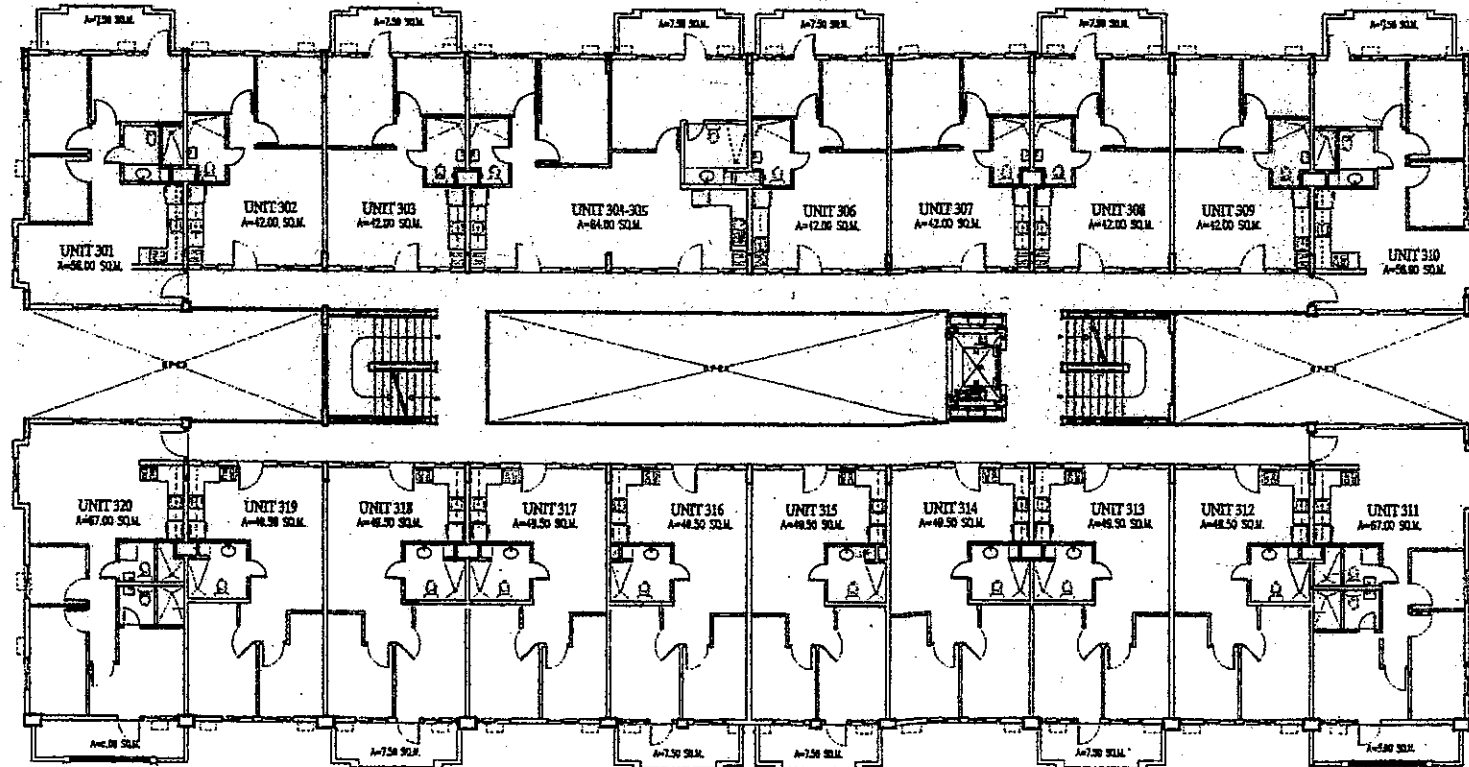
KEYPLAN



D.M. CONSUNJI, INC.
 ENGINEERS - CONTRACTORS
 2281 PASONG TANDI EXTENSION, MAKATI CITY
 TEL. NO.: 841-0841

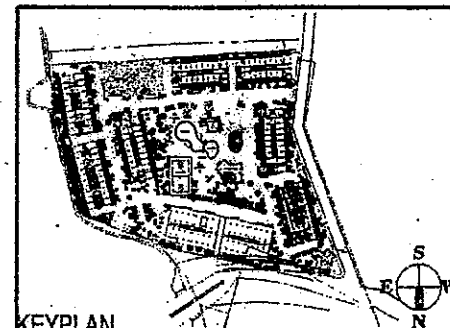
Rosewood Pointe
BLDG. C - SECOND FLOOR PLAN
 03 OCTOBER 2008

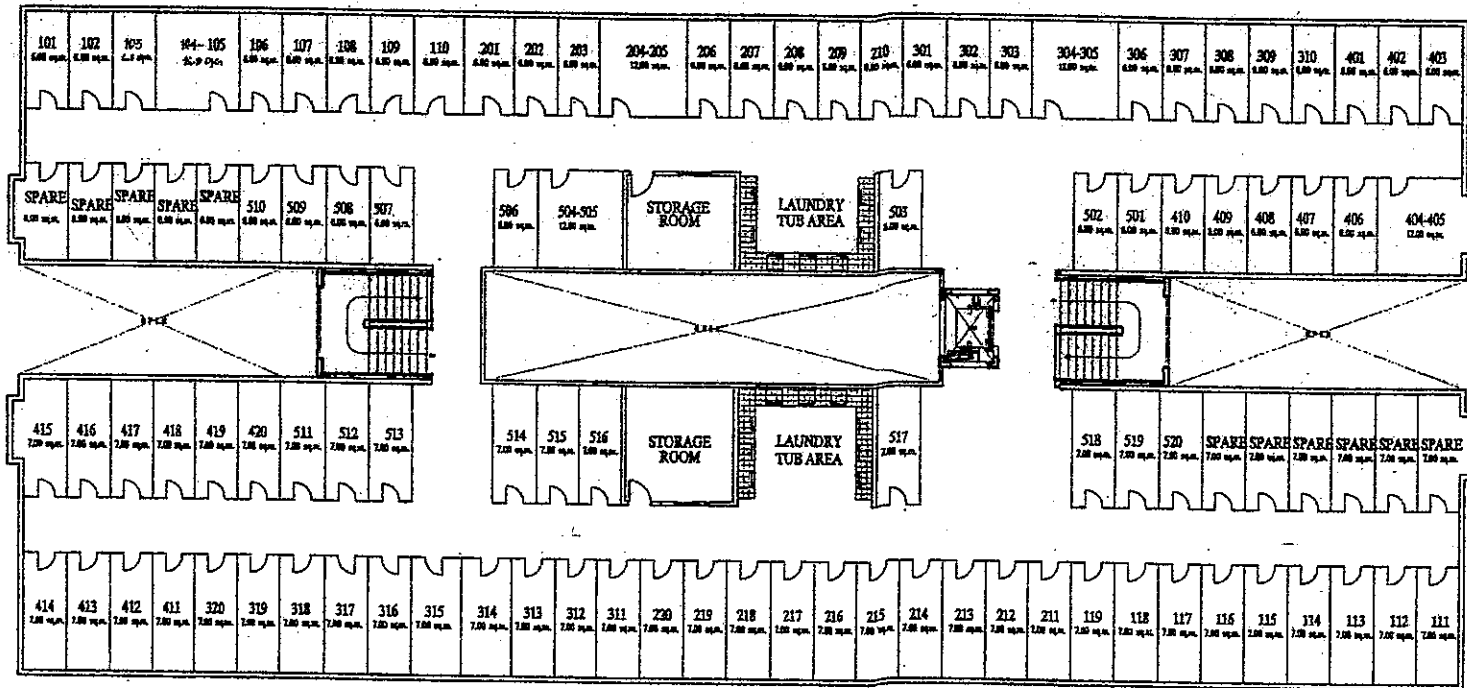




D.M. CONSUNJI, INC.
 ENGINEERS - CONTRACTORS
 2281 PASONG TAMBO EXTENSION, MAKATI CITY
 TEL. NO.: 841-0841

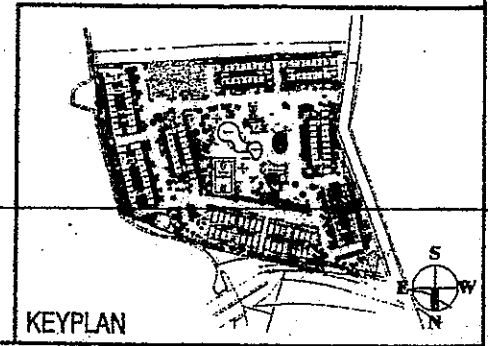
Rosewood Pointe
BLDG. C - THIRD TO FIFTH FLOOR PLAN
 03 OCTOBER 2006





D.M. CONSUNJI, INC.
 ENGINEERS - CONTRACTORS
 2281 PASONG TAWO EXTENSION, MAKATI CITY
 TEL. NO.: 841-0841

Rosewood Pointe
BLDG. C - ROOF DECK PLAN
 03 OCTOBER 2006



KEYPLAN