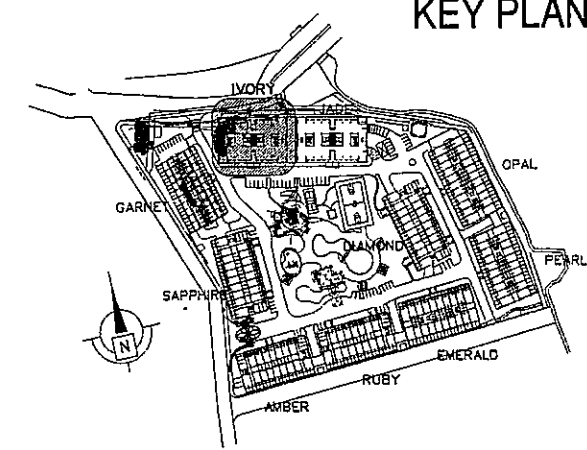


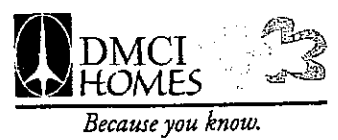
NO	DATE	REVISIONS
022808		FOR REFERENCE
072808		INTRODUCTION OF STUDIO UNITS
081208		UNITS 410, 807 & 815-CONVERTED TO STUDIO UNITS
112008		SELECTED STUDIO UNITS - BACK TO 2 BEDROOM LAYOUT

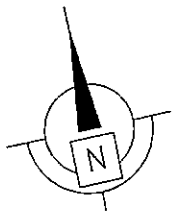
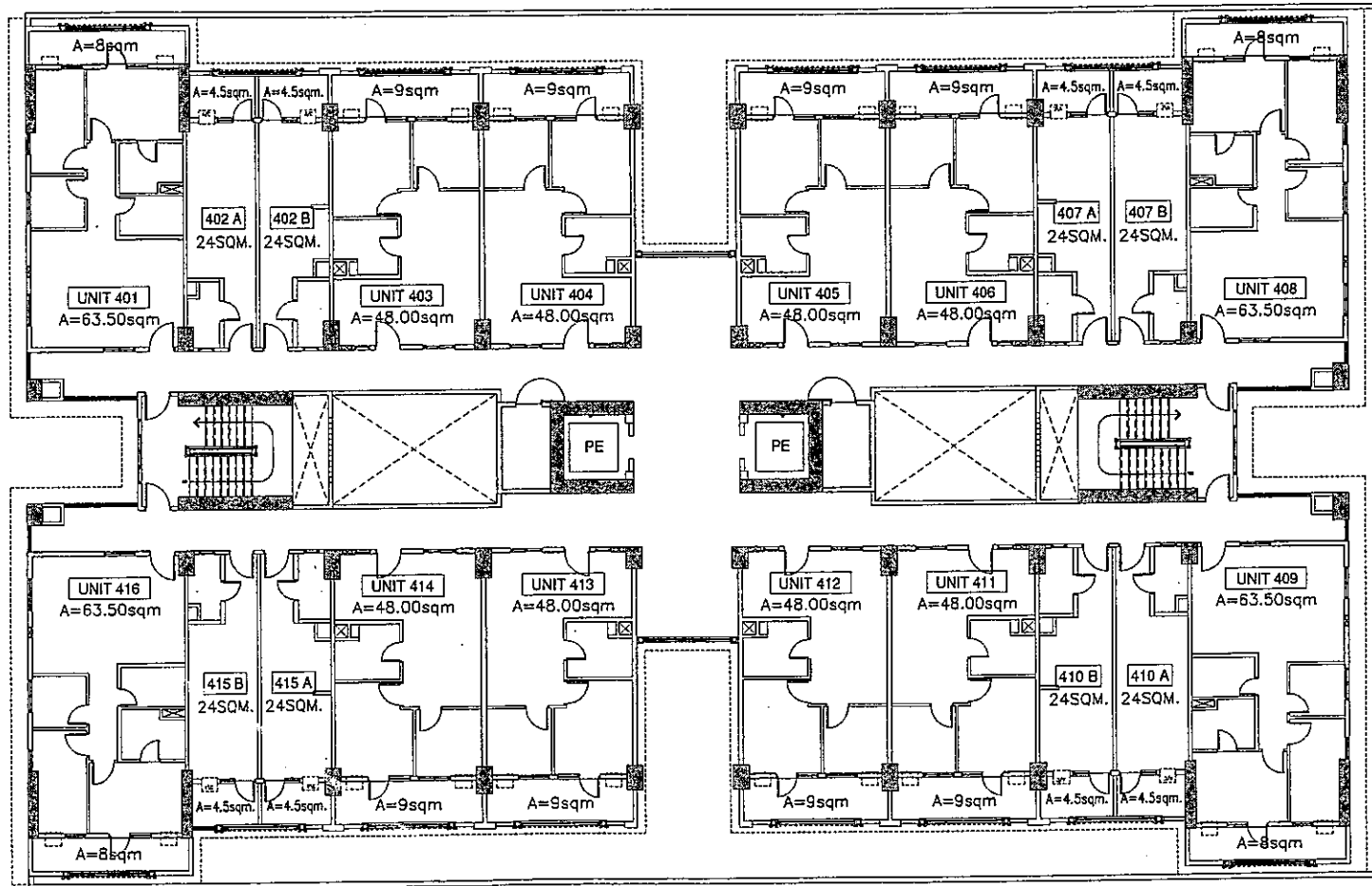
NOTED BY:	
RMS	<i>[Signature]</i> 26 NOV
GSA	<i>[Signature]</i> 02 DEC
EGC	<i>[Signature]</i> 11/16

KEY PLAN



**ROSEWOOD POINTE
BLDG. G - IVORY
3RD FLOOR PLAN
NOVEMBER 20, 2008**



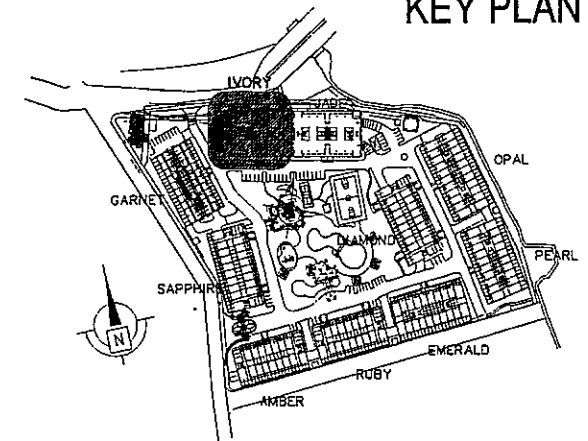


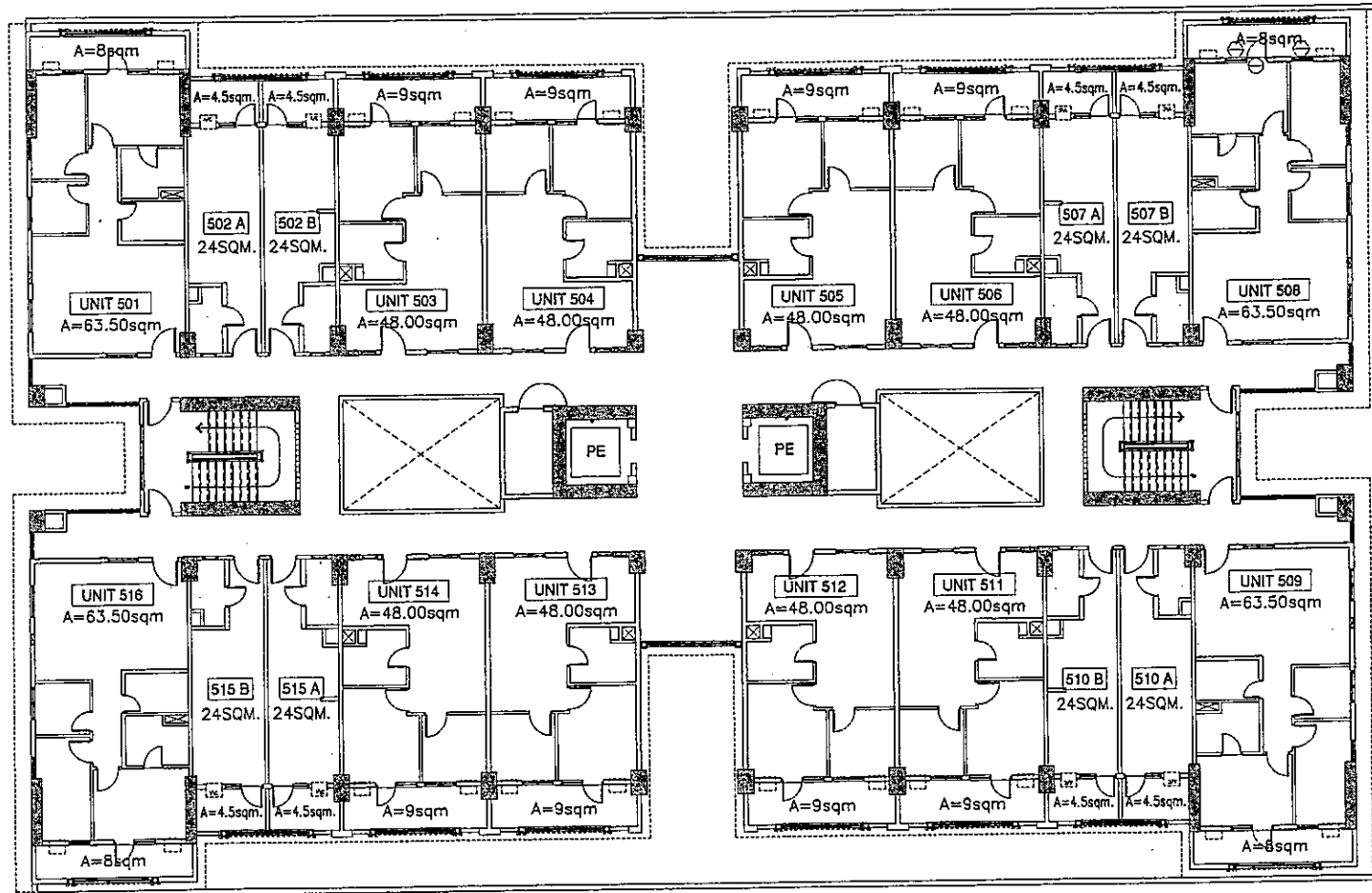
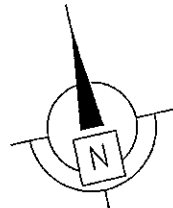
NO.	DATE	REVISIONS
022808		FOR REFERENCE
072808		INTRODUCTION OF STUDIO UNITS
081208		UNITS 410, 407 & 415—CONVERTED TO STUDIO UNITS
112008		SELECTED STUDIO UNITS - BACK TO 2 BEDROOM LAYOUT

NOTED BY:	
RMS	<i>[Signature]</i>
GSA	<i>[Signature]</i>
EGC	<i>[Signature]</i>

KEY PLAN

ROSEWOOD POINTE
 BLDG. G - IVORY
 4TH FLOOR PLAN
 NOVEMBER 21, 2008



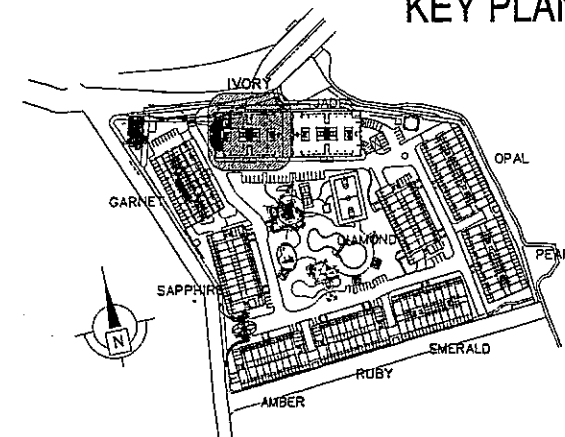


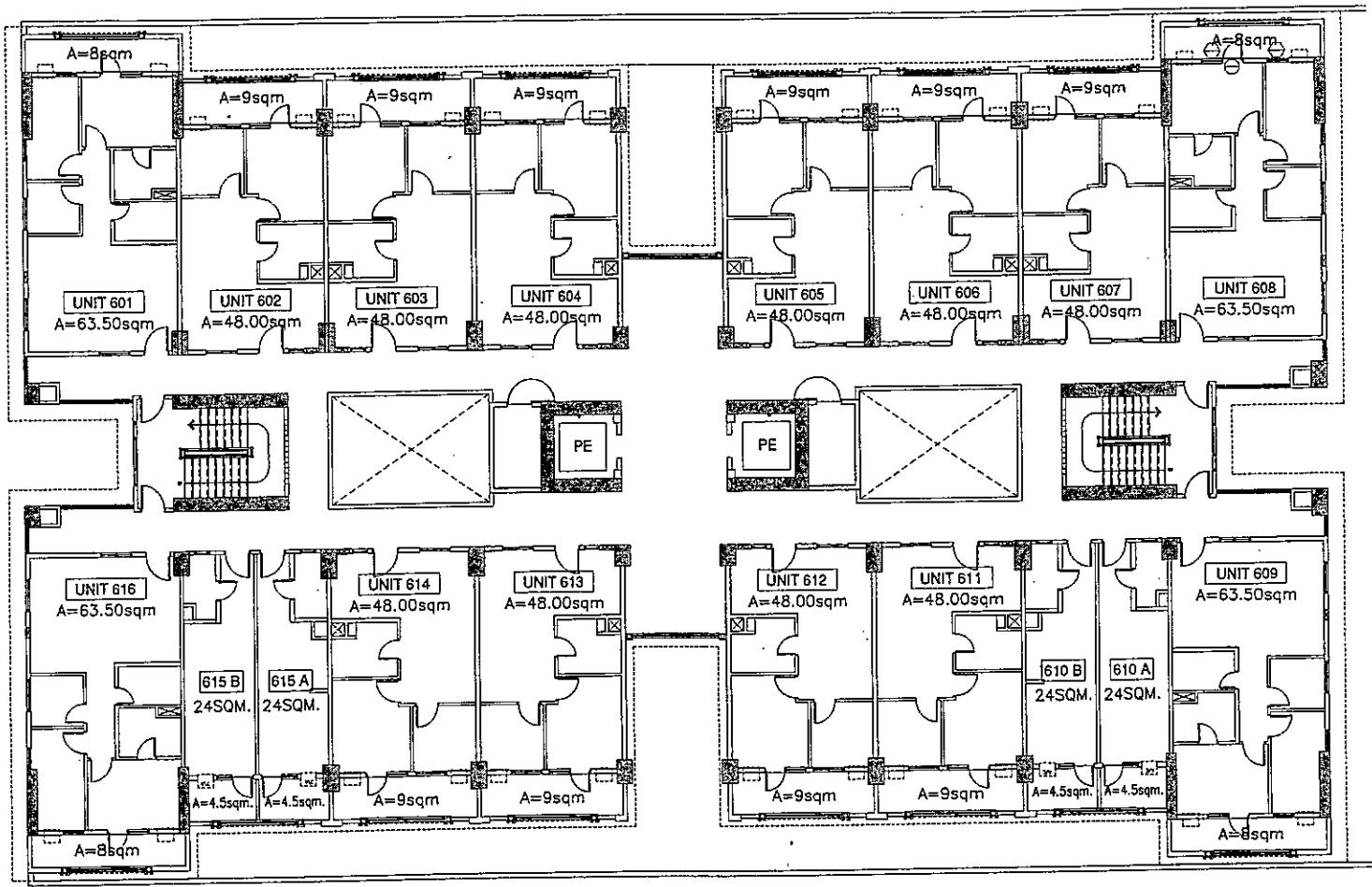
NO.	DATE	REVISIONS
022808		FOR REFERENCE
072808		INTRODUCTION OF STUDIO UNITS
081208		UNITS 410, 807 & 815-CONVERTED TO STUDIO UNITS.
112008		SELECTED STUDIO UNITS - BACK TO 2 BEDROOM LAYOUT

NOTED BY:	
RMS	<i>[Signature]</i>
GSA	<i>[Signature]</i>
EGC	<i>[Signature]</i>

KEY PLAN

ROSEWOOD POINTE
 BLDG. G - IVORY
 5TH FLOOR PLAN
 NOVEMBER 21, 2008

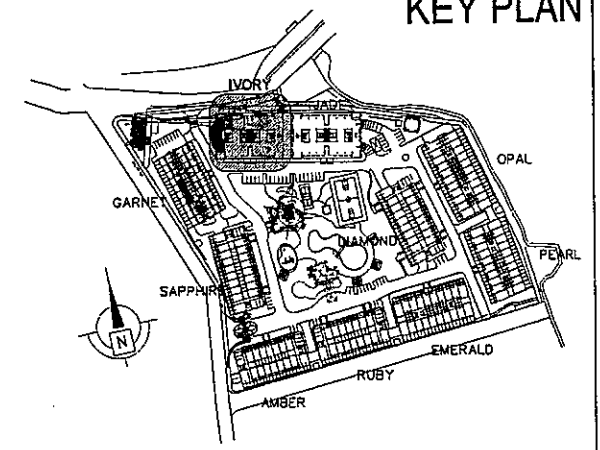




NO.	DATE	REVISIONS
022608		FOR REFERENCE
072608		INTRODUCTION OF STUDIO UNITS
081208		UNITS 410, 507 & 615-CONVERTED TO STUDIO UNITS.
112008		SELECTED STUDIO UNITS - BACK TO 2 BEDROOM LAYOUT

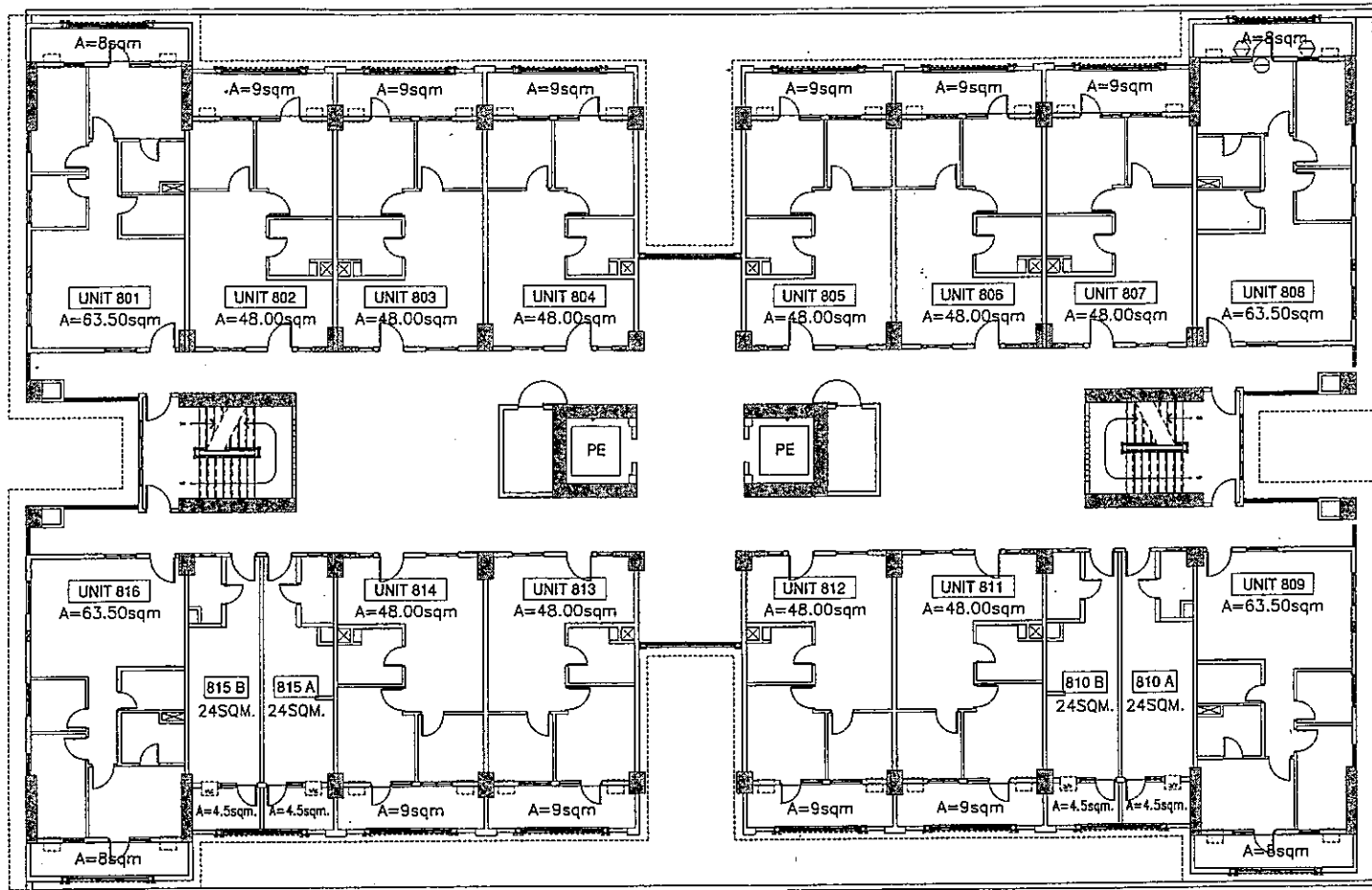
NOTED BY:	
RMS	<i>[Signature]</i>
GSA	<i>[Signature]</i>
EGC	<i>[Signature]</i>

KEY PLAN



**ROSEWOOD POINTE
BLDG. G - IVORY
TYP. 6TH & 7TH FLOOR PLAN
NOVEMBER 21, 2008**

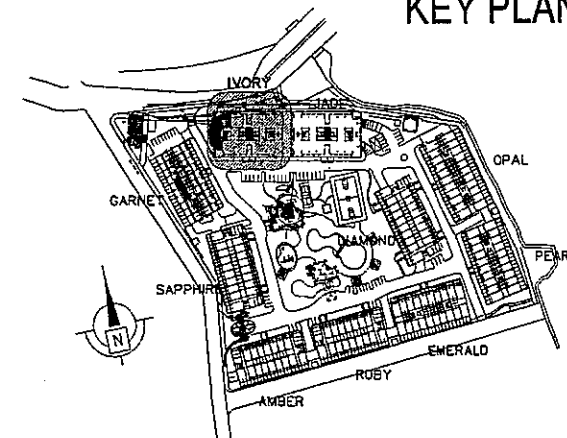




NO.	DATE	REVISIONS
022808		FOR REFERENCE
072808		INTRODUCTION OF STUDIO UNITS
081208		UNITS 410, 807 & 815- CONVERTED TO STUDIO UNITS.
112008		SELECTED STUDIO UNITS -- BACK TO 2 BEDROOM LAYOUT

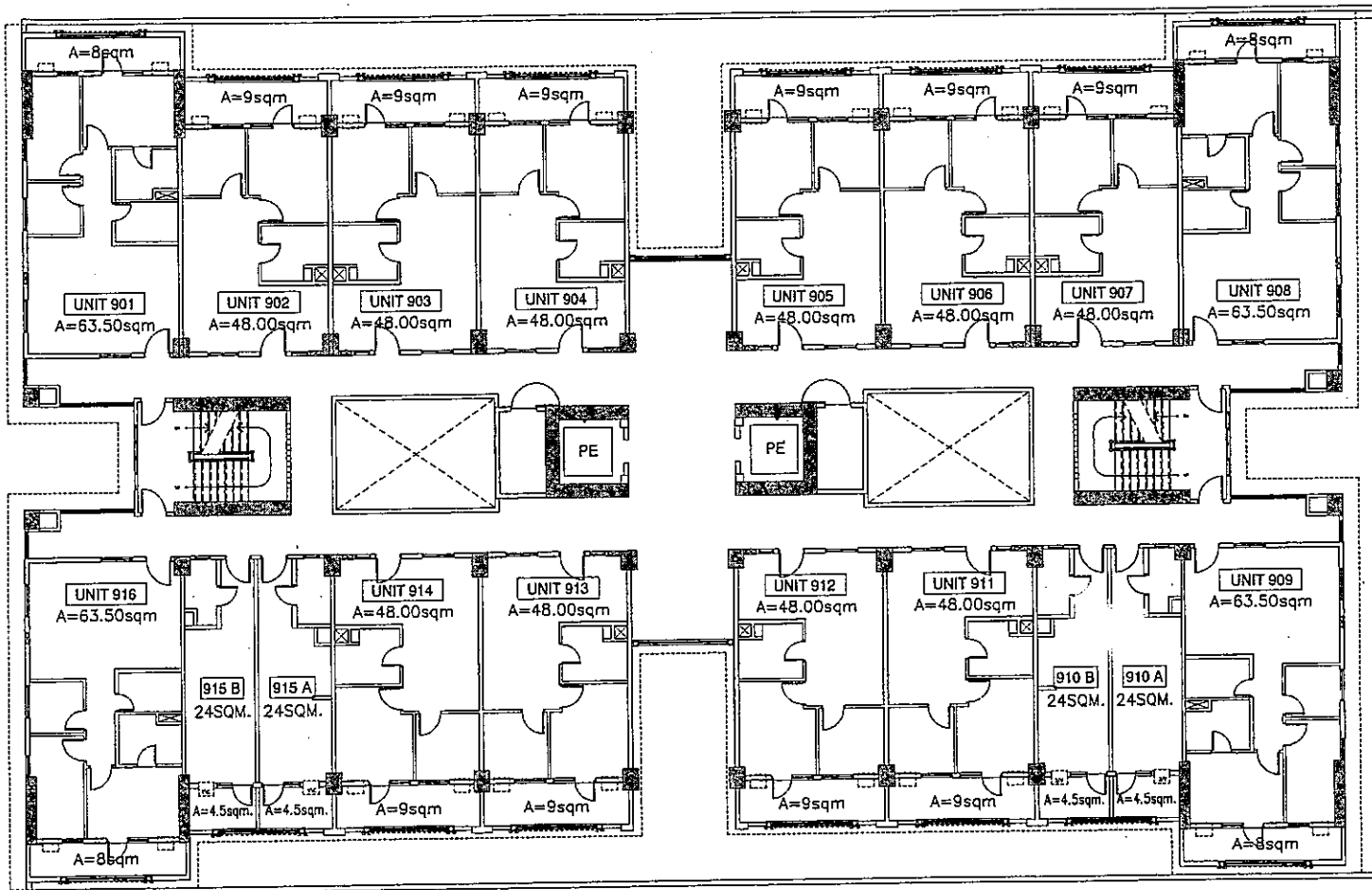
NOTED BY:	
RMS	<i>[Signature]</i>
GSA	<i>[Signature]</i>
EGC	<i>[Signature]</i>

KEY PLAN



**ROSEWOOD POINTE
BLDG. G - IVORY
8TH FLOOR PLAN
NOVEMBER 21, 2008**



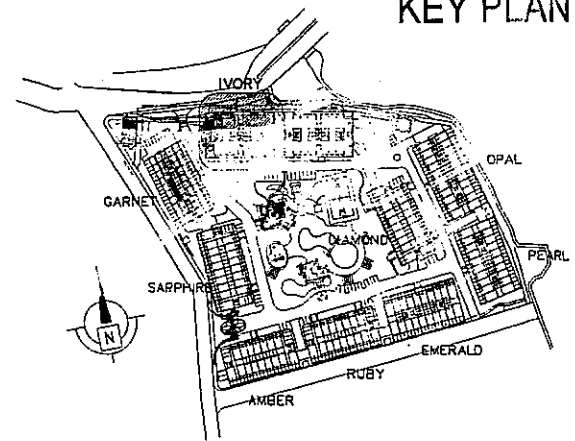


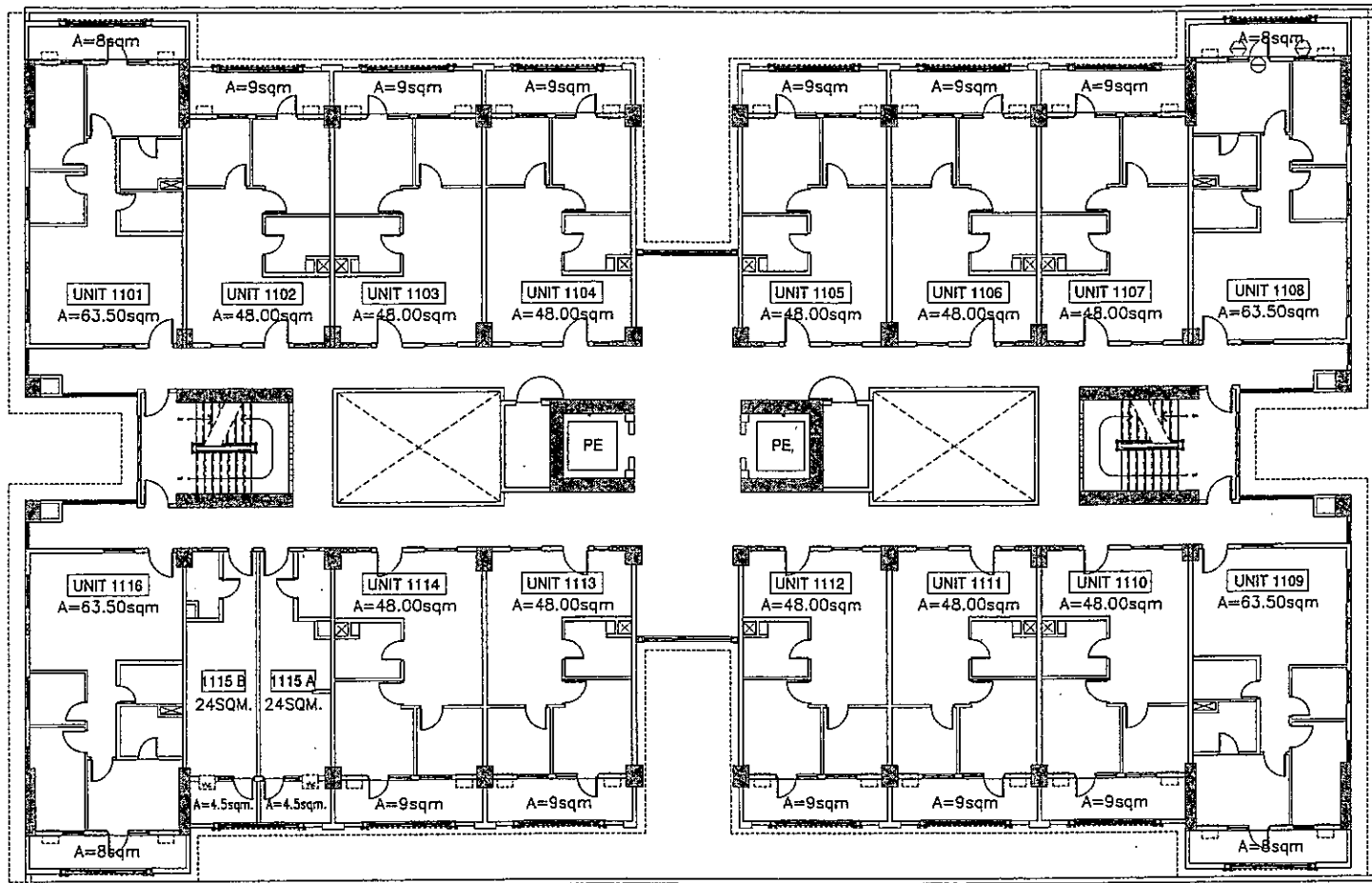
NO.	DATE	REVISIONS
022808		FOR REFERENCE
072808		INTRODUCTION OF STUDIO UNITS
081208		UNITS 410, 807 & 815-CONVERTED TO STUDIO UNITS.
112008		SELECTED STUDIO UNITS - BACK TO 2 BEDROOM LAYOUT

NOTED BY:	
RMS	<i>[Signature]</i>
GSA	<i>[Signature]</i>
EGC	<i>[Signature]</i>

KEY PLAN

ROSEWOOD POINTE
 BLDG. G - IVORY
 TYP. 9TH & 10TH FLOOR PLAN
 NOVEMBER 21, 2008

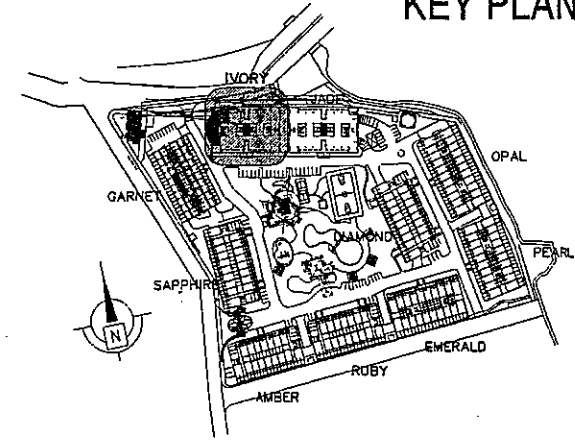




NO.	DATE	REVISIONS
022808		FOR REFERENCE
072808		INTRODUCTION OF STUDIO UNITS
081208		UNITS 410, 807 & 815 - CONVERTED TO STUDIO UNITS
112008		SELECTED STUDIO UNITS - BACK TO 2 BEDROOM LAYOUT

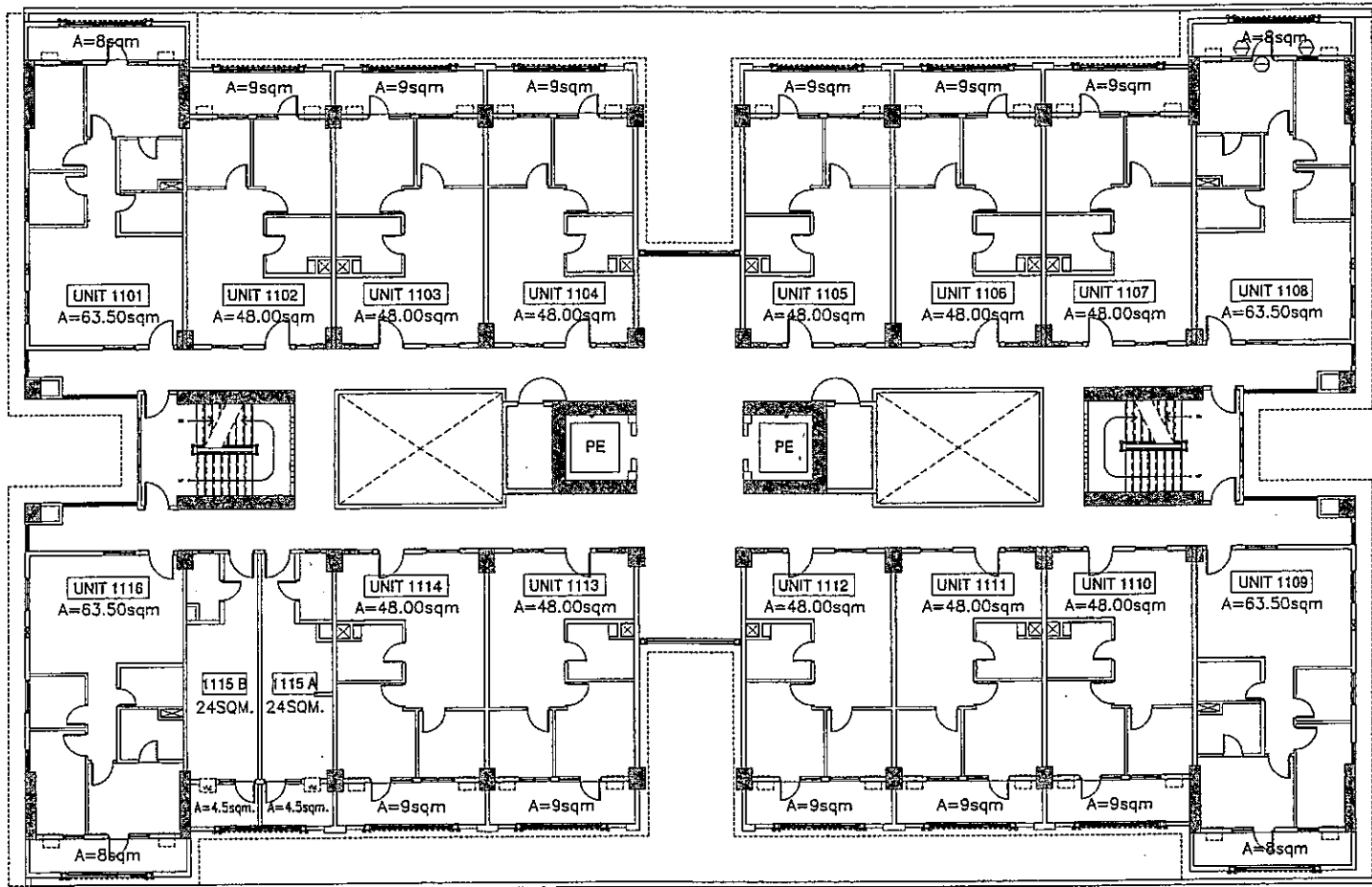
NOTED BY:		
RMS	<i>[Signature]</i>	26/08/08
GSA	<i>[Signature]</i>	02/08/08
EGC	<i>[Signature]</i>	11/08/08

KEY PLAN



ROSEWOOD POINTE
BLDG. G - IVORY
TYP. 11TH & 12TH FLOOR PLAN
NOVEMBER 21, 2008

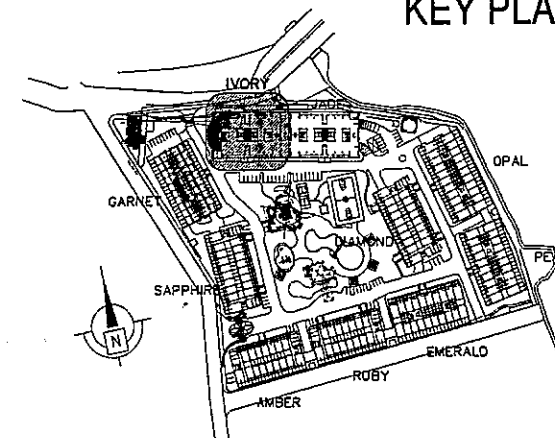




NO.	DATE	REVISIONS
Δ	022808	FOR REFERENCE
Δ	022808	INTRODUCTION OF STUDIO UNITS
Δ	081208	UNITS 410, 807 & 815 - CONVERTED TO STUDIO UNITS
Δ	112008	SELECTED STUDIO UNITS - BACK TO 2 BEDROOM LAYOUT

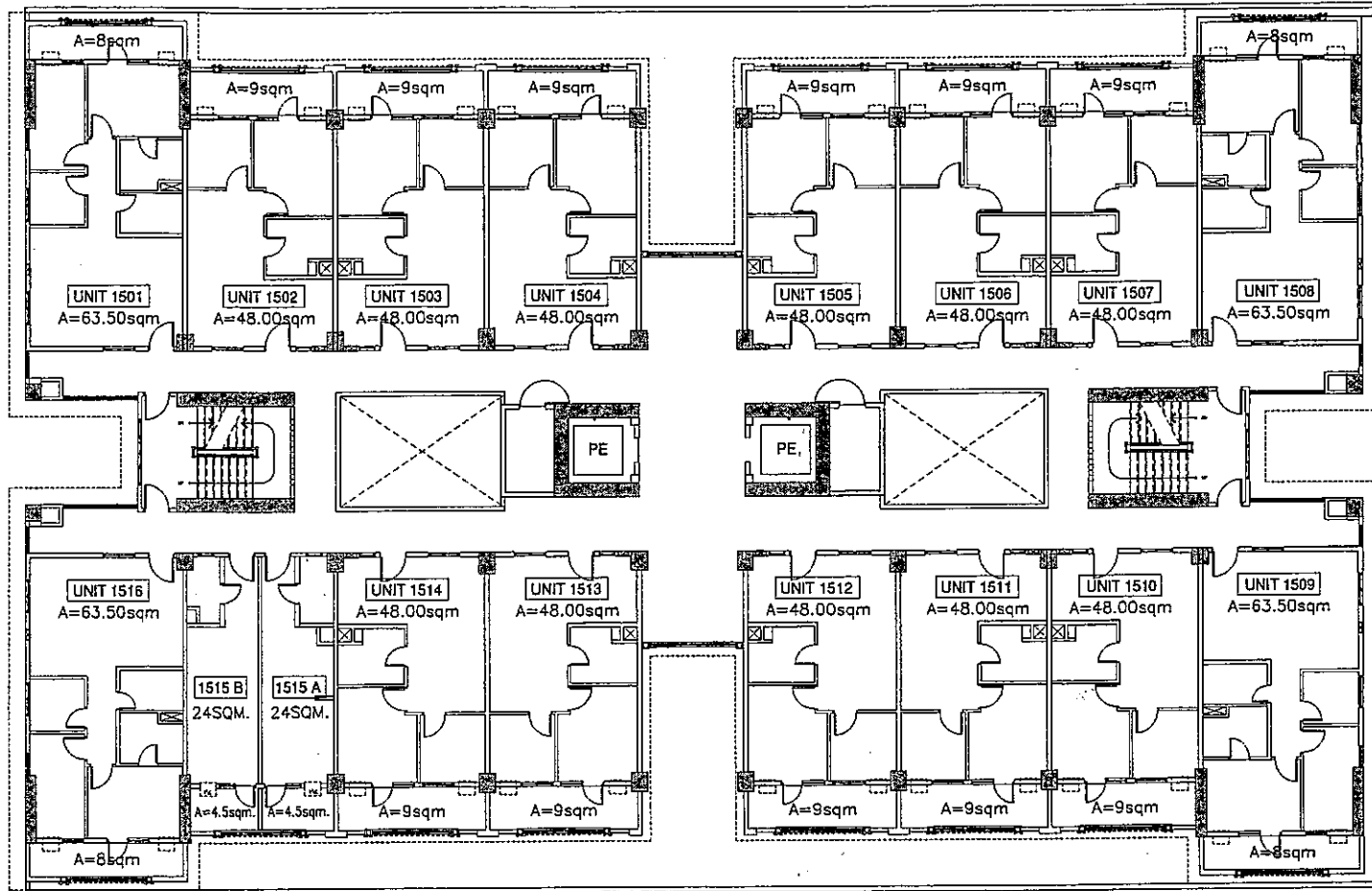
NOTED BY:	
RMS	<i>[Signature]</i>
GSA	<i>[Signature]</i>
EGC	<i>[Signature]</i>

KEY PLAN



**ROSEWOOD POINTE
BLDG. G - IVORY
TYP. 11TH & 12TH FLOOR PLAN
NOVEMBER 21, 2008**

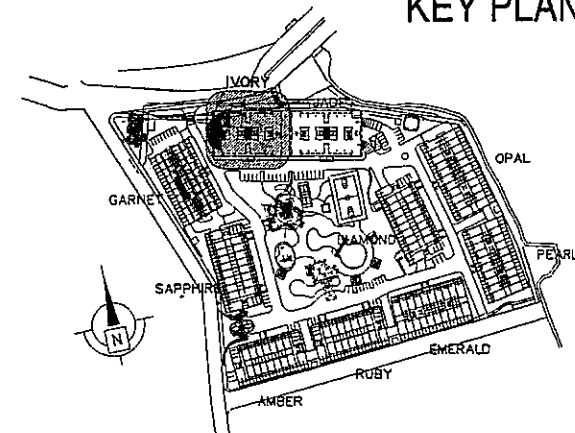




NO.	DATE	REVISIONS
△	022808	FOR REFERENCE
△	072808	INTRODUCTION OF STUDIO UNITS
△	081208	UNITS 410, 807 & 815 - CONVERTED TO STUDIO UNITS
△	112008	SELECTED STUDIO UNITS - BACK TO 2 BEDROOM LAYOUT

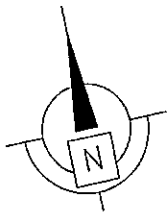
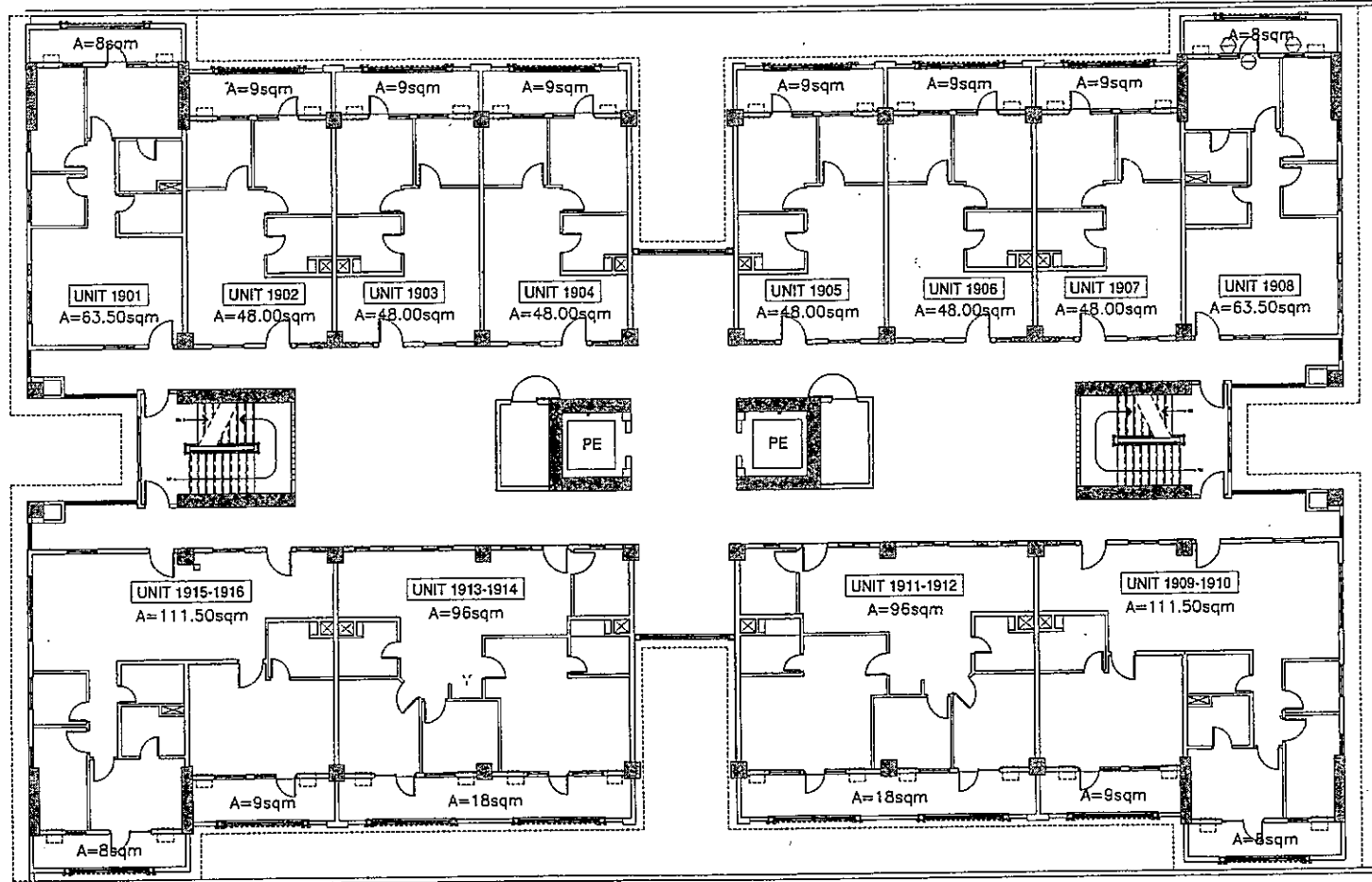
NOTED BY:	
RMS	<i>[Signature]</i>
GSA	<i>[Signature]</i>
EGC	<i>[Signature]</i>

KEY PLAN



ROSEWOOD POINTE
 BLDG. G - IVORY
 TYP. 15TH, 16TH, 17TH & 18TH FLOOR PLAN
 NOVEMBER 21, 2008



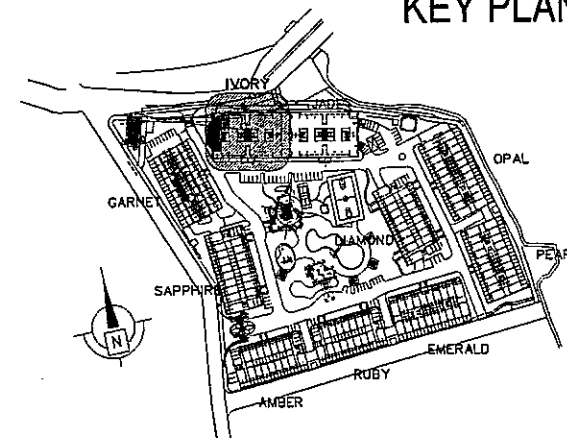


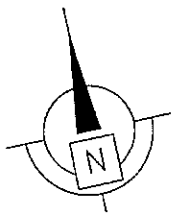
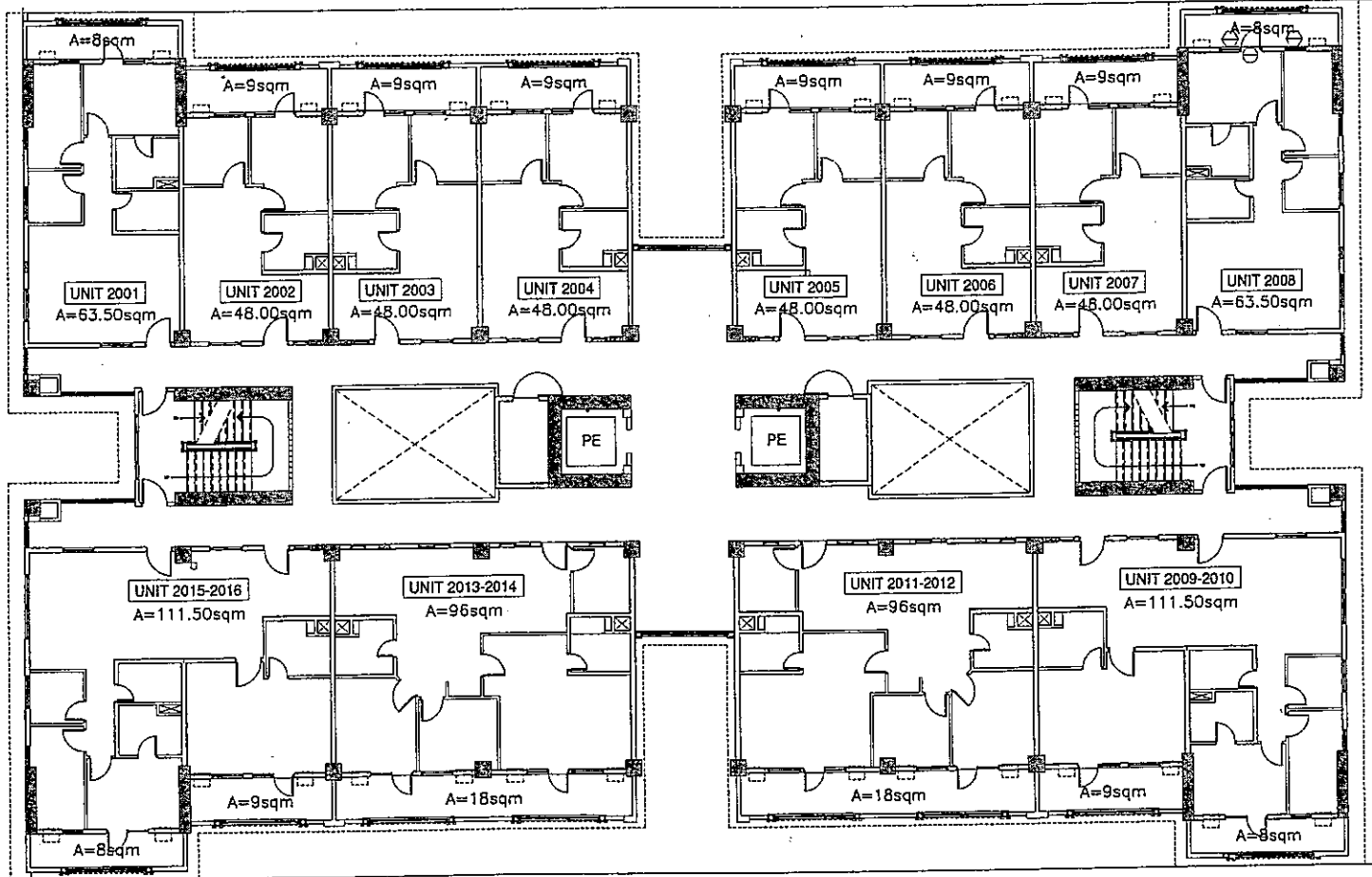
NO.	DATE	REVISIONS
1	10/22/08	FOR REFERENCE

NOTED BY:		
RMS	<i>[Signature]</i>	<i>[Signature]</i>
GSA	<i>[Signature]</i>	<i>[Signature]</i>
EGC	<i>[Signature]</i>	<i>[Signature]</i>

KEY PLAN

ROSEWOOD POINTE
BLDG. G - IVORY
19TH FLOOR PLAN
 NOVEMBER 21, 2008



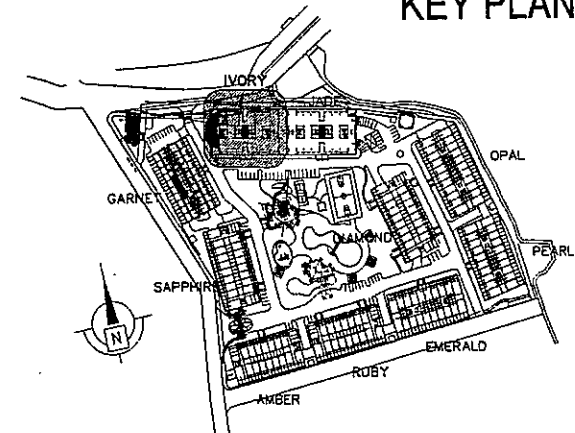


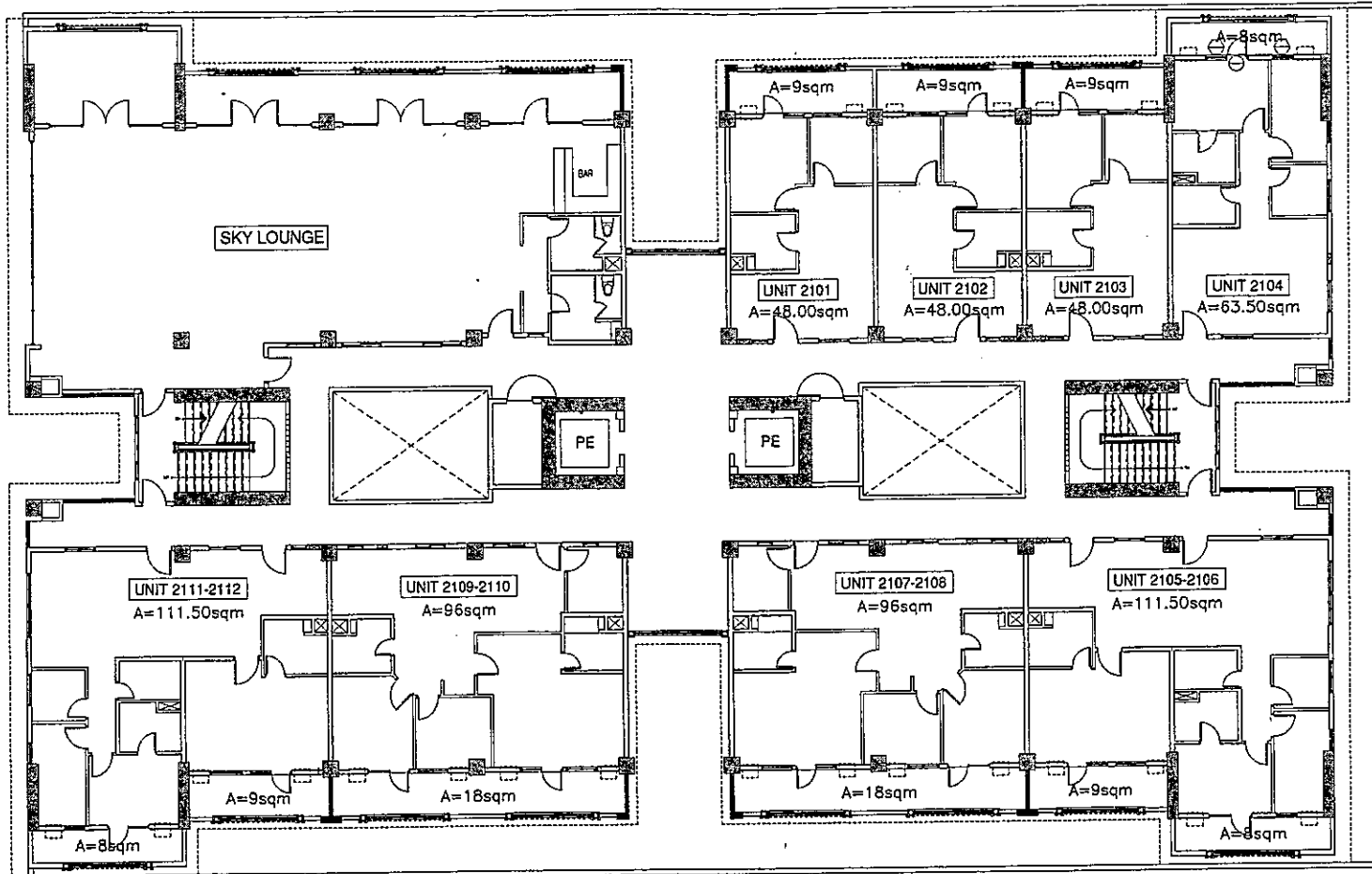
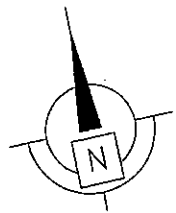
NO.	DATE	REVISIONS
1	022808	FOR REFERENCE

NOTED BY:		
RMS	<i>[Signature]</i>	<i>[Signature]</i>
GSA	<i>[Signature]</i>	<i>[Signature]</i>
EGC	<i>[Signature]</i>	<i>[Signature]</i>

KEY PLAN

ROSEWOOD POINTE
 BLDG. G - IVORY
 20TH FLOOR PLAN
 NOVEMBER 21, 2008



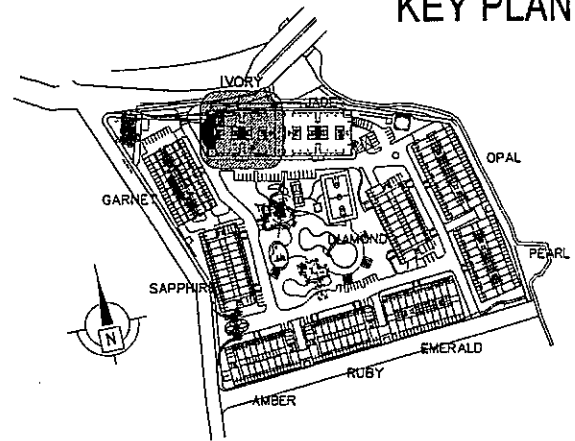


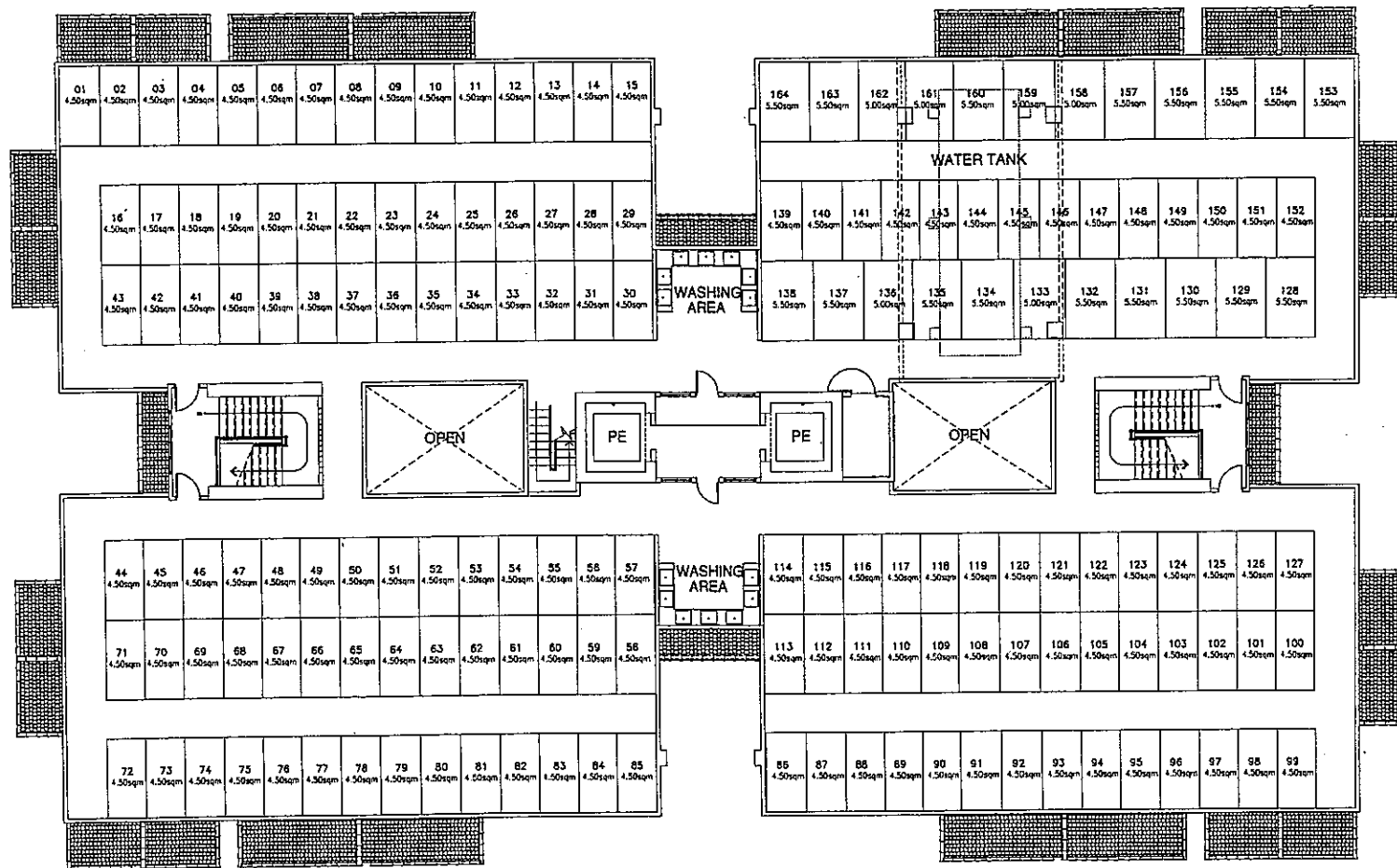
NO.	DATE	REVISIONS
1	022808	FOR REFERENCE

NOTED BY:		
RMS	<i>[Signature]</i>	
GSA	<i>[Signature]</i>	
EGC	<i>[Signature]</i>	

KEY PLAN

ROSEWOOD POINTE
 BLDG. G - IVORY
 21ST FLOOR PLAN
 NOVEMBER 21, 2008





NO.	DATE	REVISIONS
1	022808	FOR REFERENCE

NOTED BY:		
RMS	<i>[Signature]</i>	26/11/08
GSA	<i>[Signature]</i>	02/12/08
EGC	<i>[Signature]</i>	17/11/08

KEY PLAN

**ROSEWOOD POINTE
BLDG. G - IVORY
LAUNDRY CAGE LAYOUT
NOVEMBER 21, 2008**

