

# BLDG. G - LIME

## PARKING LEVEL 1 FLOOR PLAN

5 NOVEMBER 2012



NO.	DATE	REVISIONS
00	11/05/12	Issued for reference

NOTED BY:	RMS	SMN	CBW
	GSA		09 MV

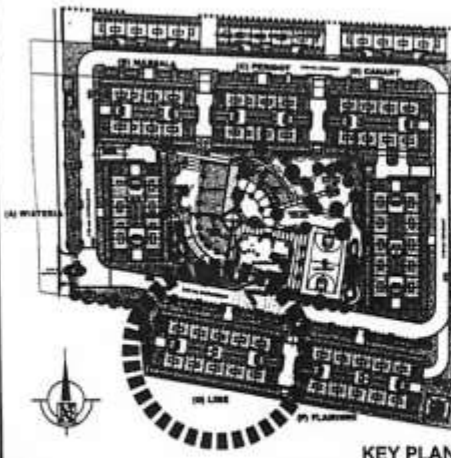
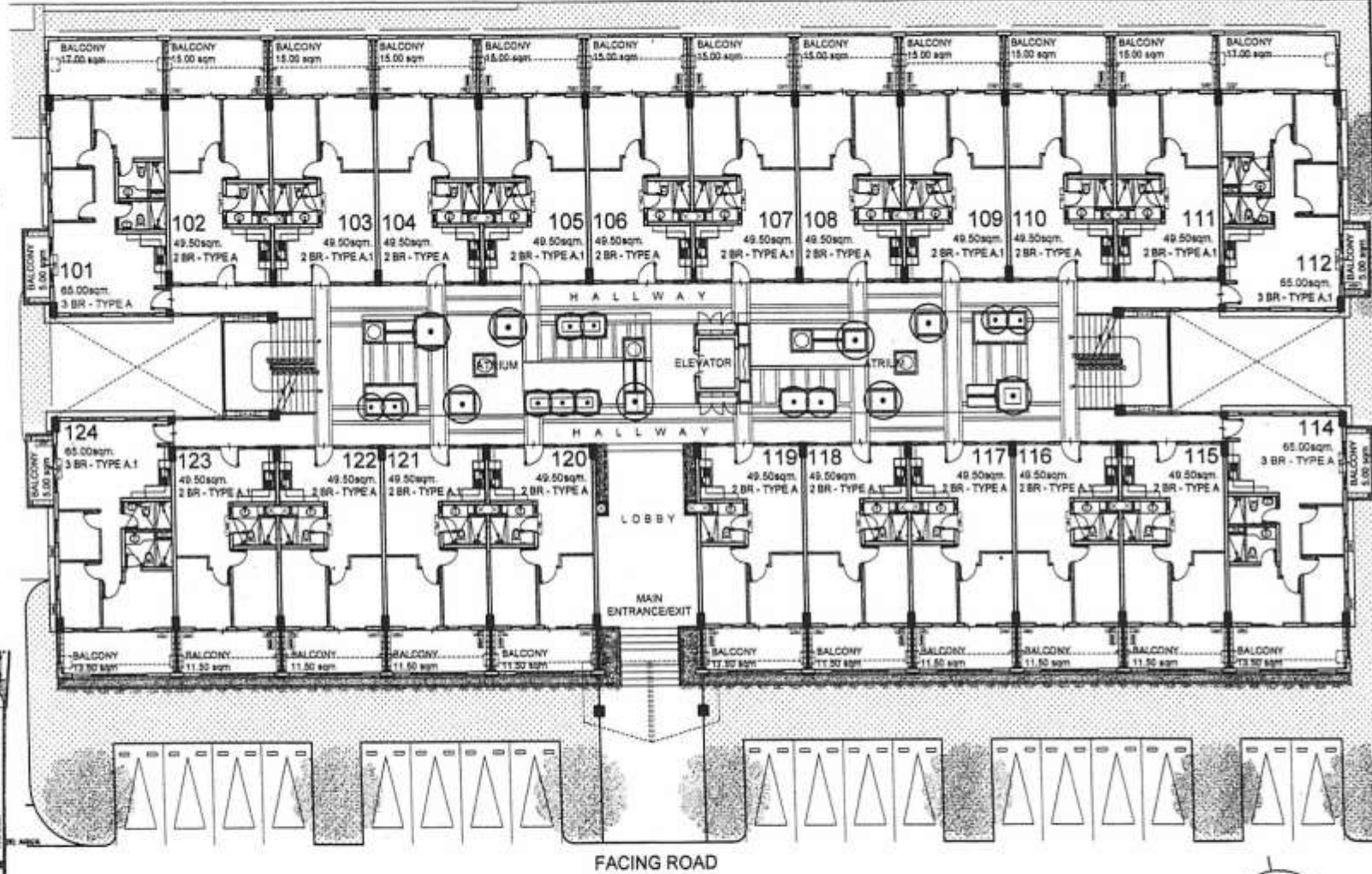


AVAILABILITY PLAN

UNIT LIST FOR POSSIBLE TANDEM:

- |           |           |
|-----------|-----------|
| 103 & 104 | 116 & 117 |
| 105 & 106 | 118 & 119 |
| 107 & 108 | 121 & 122 |
| 109 & 110 |           |

NOTE: Subject to change upon availability of units and standard company policy regarding request for tandem.



KEY PLAN

## BLDG. G - LIME UPPER GROUND FLOOR PLAN

5 NOVEMBER 2012



<p>DMCI HOMES Feels real good to be home</p>	NO.	DATE	REVISIONS
	01	11/05/12	Issued for reference
NOTED BY:			
RMS	<i>[Signature]</i>		
GSA			<i>[Signature]</i>

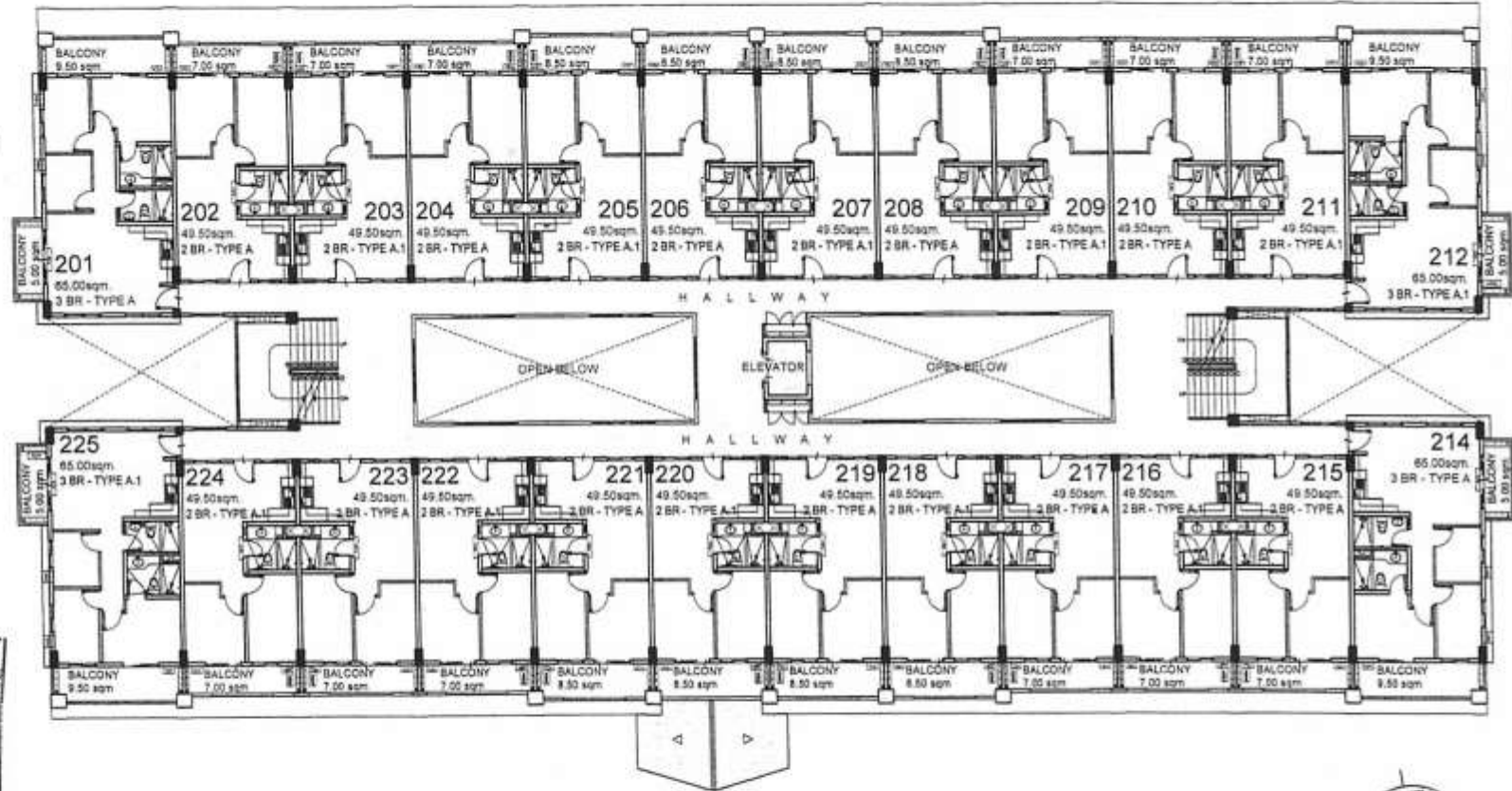


AVAILABILITY PLAN

UNIT LIST FOR POSSIBLE TANDEM:

- |           |           |
|-----------|-----------|
| 203 & 204 | 216 & 217 |
| 205 & 206 | 218 & 219 |
| 207 & 208 | 220 & 221 |
| 209 & 210 | 222 & 223 |

NOTE: Subject to change upon availability of units and standard company policy regarding request for tandem.



KEY PLAN

# BLDG. G - LIME

## SECOND FLOOR PLAN

5 NOVEMBER 2012



<p>DMCI HOMES Feels real good to be home</p>	NO. DATE REVISIONS	NOTED BY: RMS <i>[Signature]</i> GSA <i>[Signature]</i>
	01 110012 issued for reference	

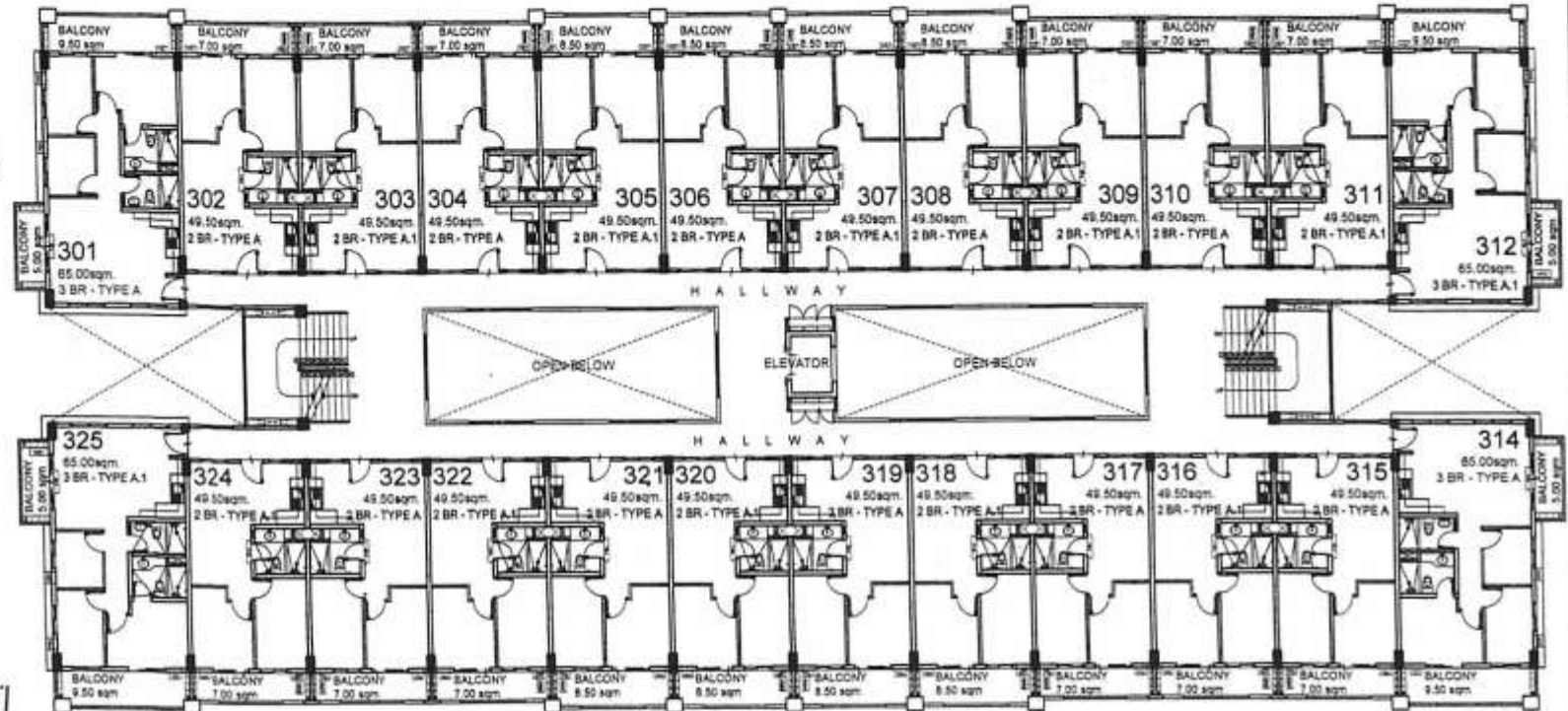


AVAILABILITY PLAN

UNIT LIST FOR POSSIBLE TANDEM:

- 303 & 304
- 305 & 306
- 307 & 308
- 309 & 310
- 316 & 317
- 318 & 319
- 320 & 321
- 322 & 323

NOTE: Subject to change upon availability of units and standard company policy regarding request for tandem.



KEY PLAN

# BLDG. G - LIME

## THIRD FLOOR PLAN

5 NOVEMBER 2012



NO.	DATE	REVISIONS
01	11/05/12	Issued for reference

NOTED BY:  
 RMS *[Signature]*  
 GSA *[Signature]*



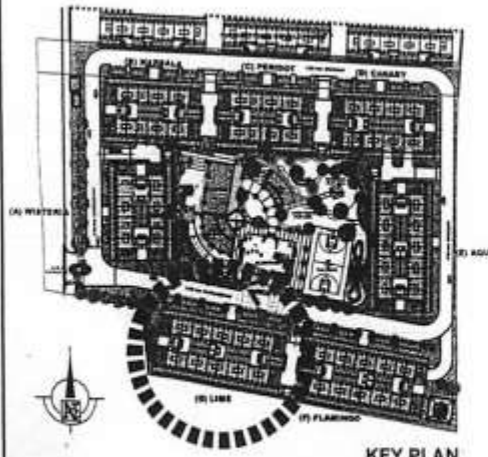
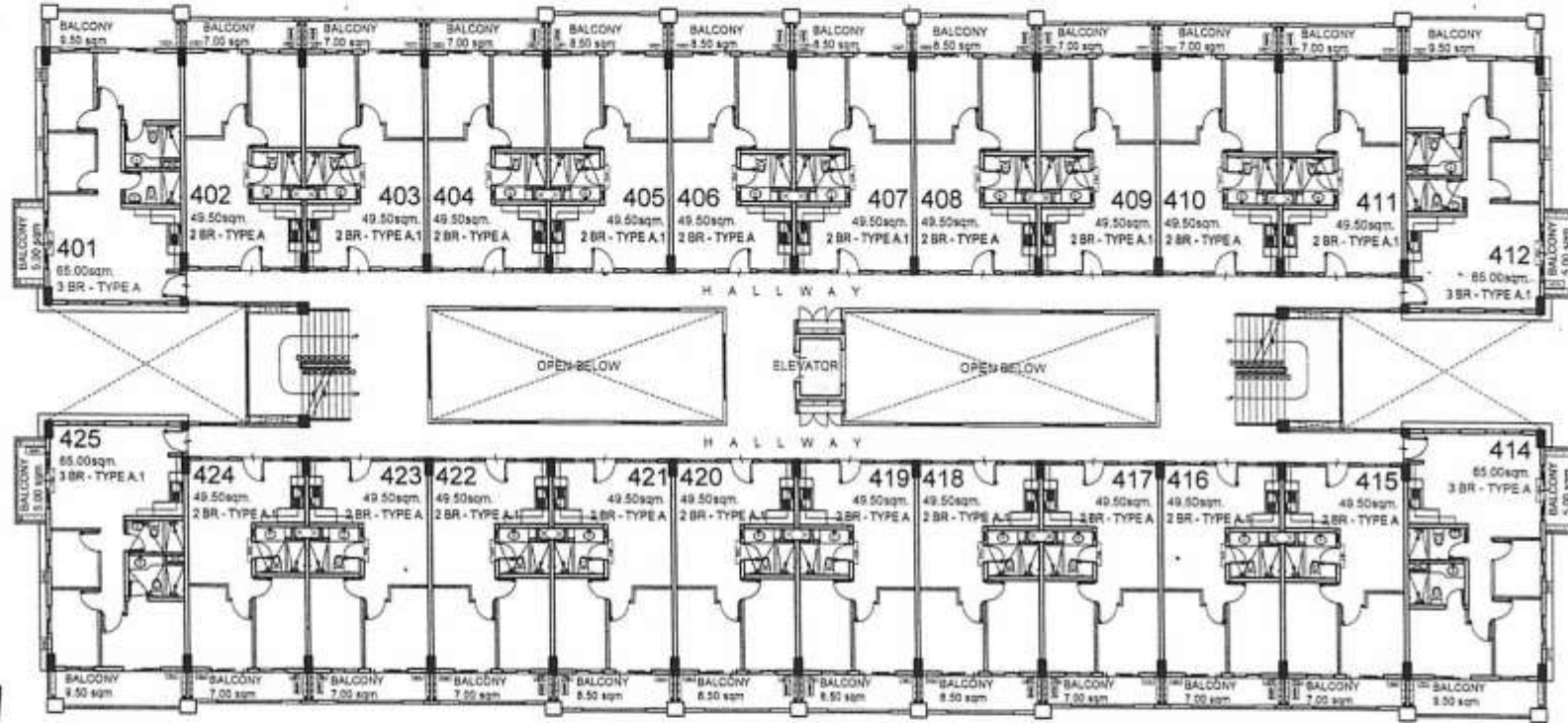
AVAILABILITY PLAN



UNIT LIST FOR POSSIBLE TANDEM:

- |           |           |
|-----------|-----------|
| 403 & 404 | 416 & 417 |
| 405 & 406 | 418 & 419 |
| 407 & 408 | 420 & 421 |
| 409 & 410 | 422 & 423 |

NOTE: Subject to change upon availability of units and standard company policy regarding request for tandem.



KEY PLAN

**BLDG. G - LIME**  
**FOURTH FLOOR PLAN**  
 NOVEMBER 5 2012



NO.	DATE	REVISIONS
01	110812	Issued for reference

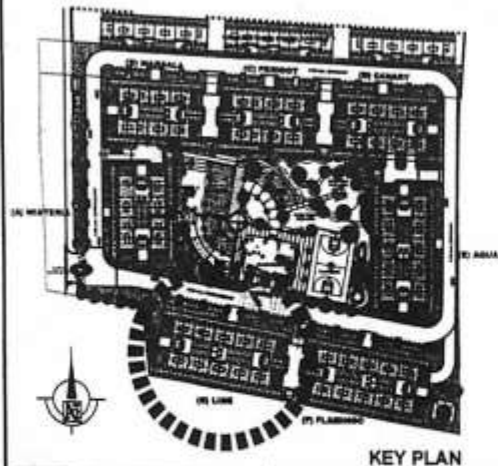
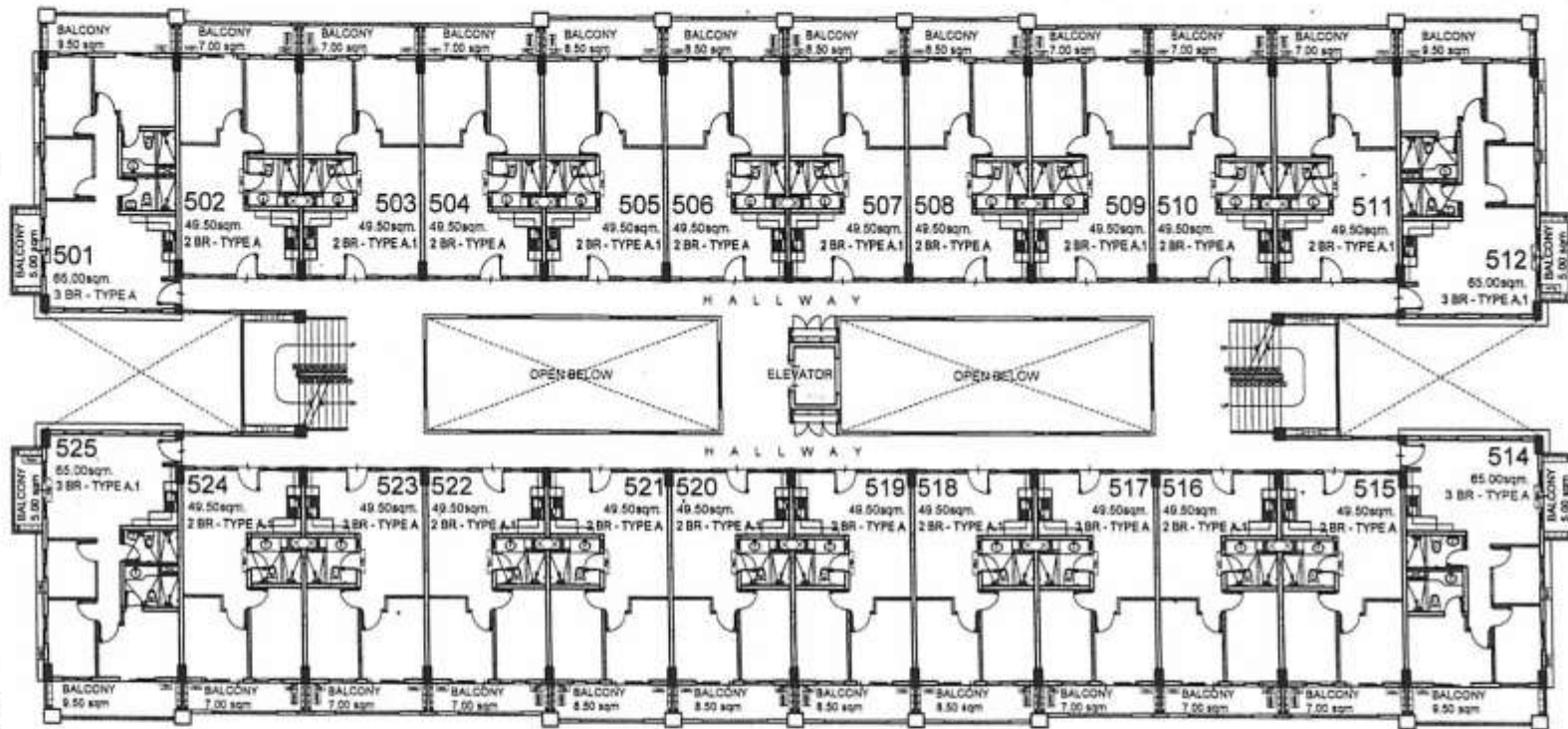
NOTED BY:  
 RMS *[Signature]*  
 GSA *[Signature]*



UNIT LIST FOR POSSIBLE TANDEM:

- 503 & 504
- 505 & 506
- 507 & 508
- 509 & 510
- 516 & 517
- 518 & 519
- 520 & 521
- 522 & 523

NOTE: Subject to change upon availability of units and standard company policy regarding request for tandem.



KEY PLAN

# BLDG. G - LIME

## FIFTH FLOOR PLAN

5 NOVEMBER 2012



NO.	DATE	REVISIONS
01	11/05/12	Issued for reference

NOTED BY:  
 RMS *[Signature]*  
 GSA *[Signature]* 09/11/12

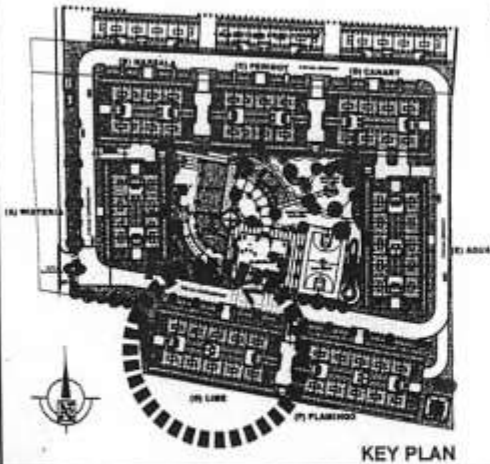
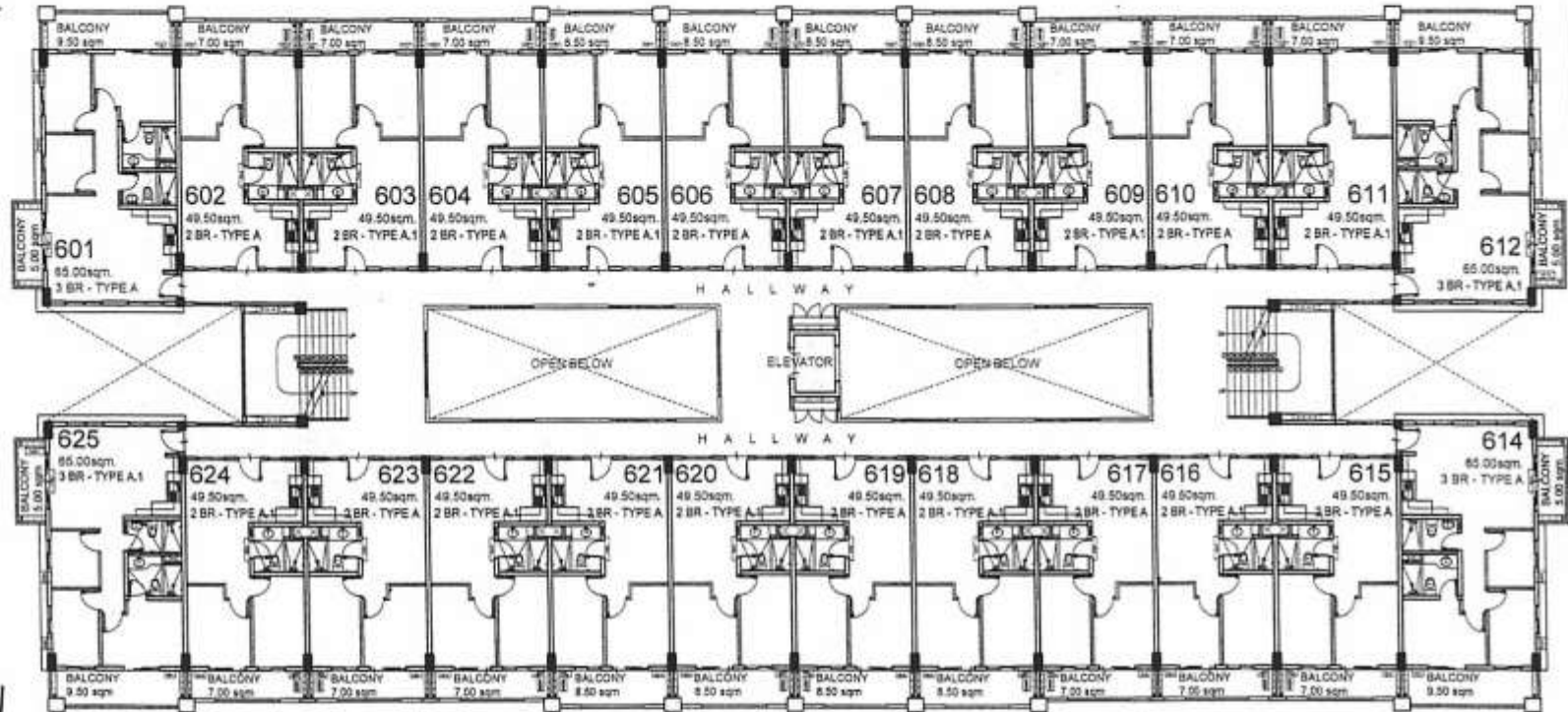


AVAILABILITY PLAN

UNIT LIST FOR POSSIBLE TANDEM:

- 603 & 604
- 605 & 606
- 607 & 608
- 609 & 610
- 616 & 617
- 618 & 619
- 620 & 621
- 622 & 623

NOTE: Subject to change upon availability of units and standard company policy regarding request for tandem.



KEY PLAN

# BLDG. G - LIME

## SIXTH FLOOR PLAN

5 NOVEMBER 2012



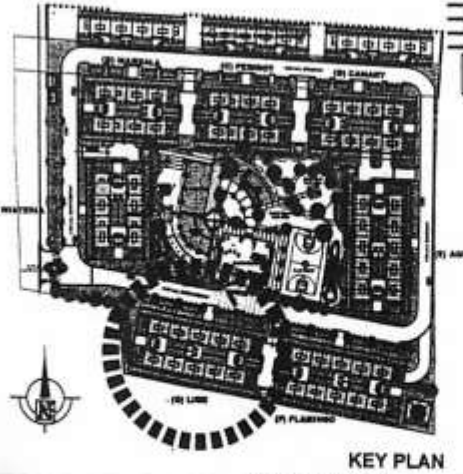
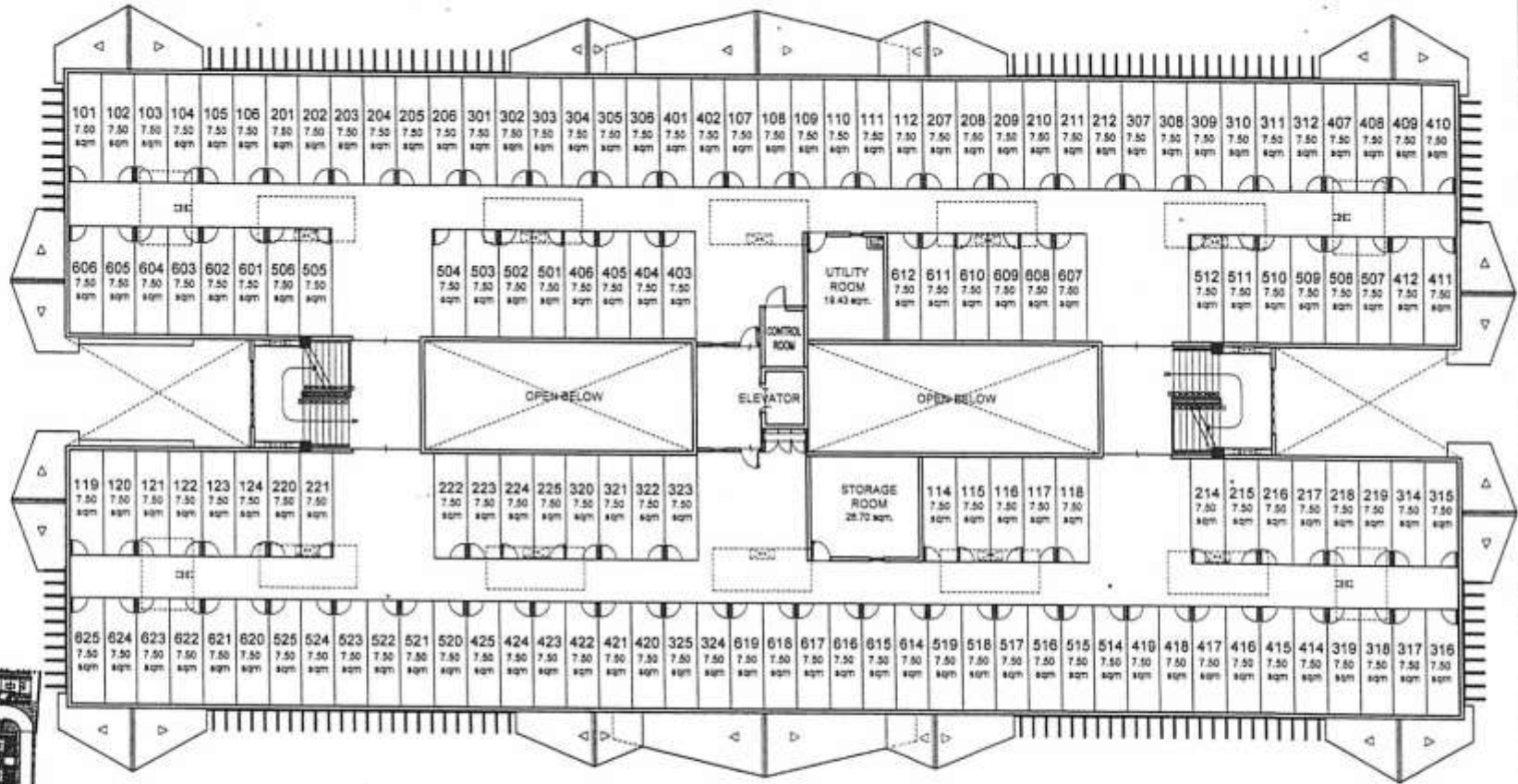
3

NO.	DATE	REVISIONS
01	11/05/12	Issued for reference

NOTED BY:  
 RMS *[Signature]*  
 GSA *[Signature]*



AVAILABILITY PLAN



KEY PLAN

# BLDG. G - LIME

## ROOF DECK PLAN

5 NOVEMBER 2012



<p>DMCI HOMES</p> <p>Feels real good to be home</p>	NO.	DATE	REVISIONS
	01	11/05/12	Issued for reference
NOTED BY:			
RMS		<i>[Signature]</i>	
GSA		<i>[Signature]</i>	



AVAILABILITY PLAN