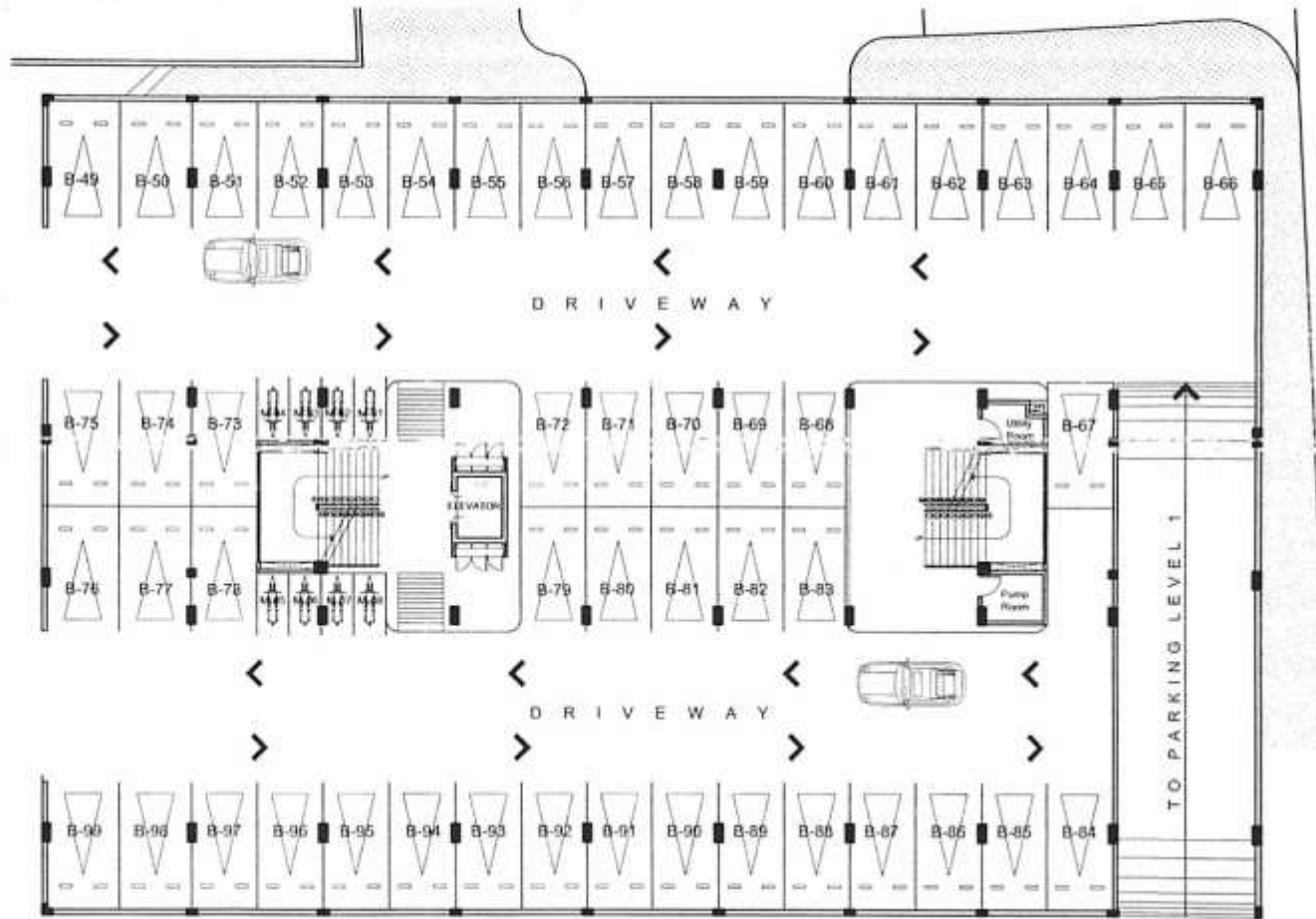


facing amenities



facing road

BLDG. B - MARSALA
PARKING LEVEL 2 FLOOR PLAN
 10 OCTOBER 2012



KEY PLAN

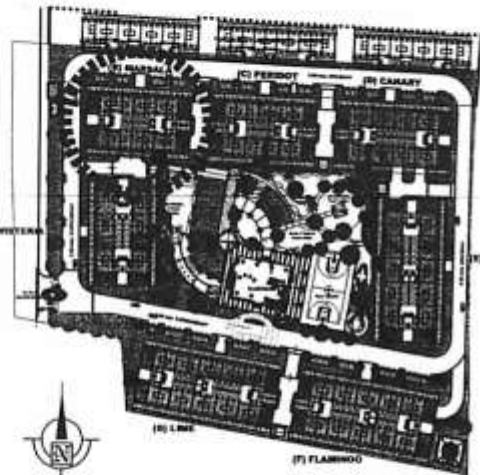
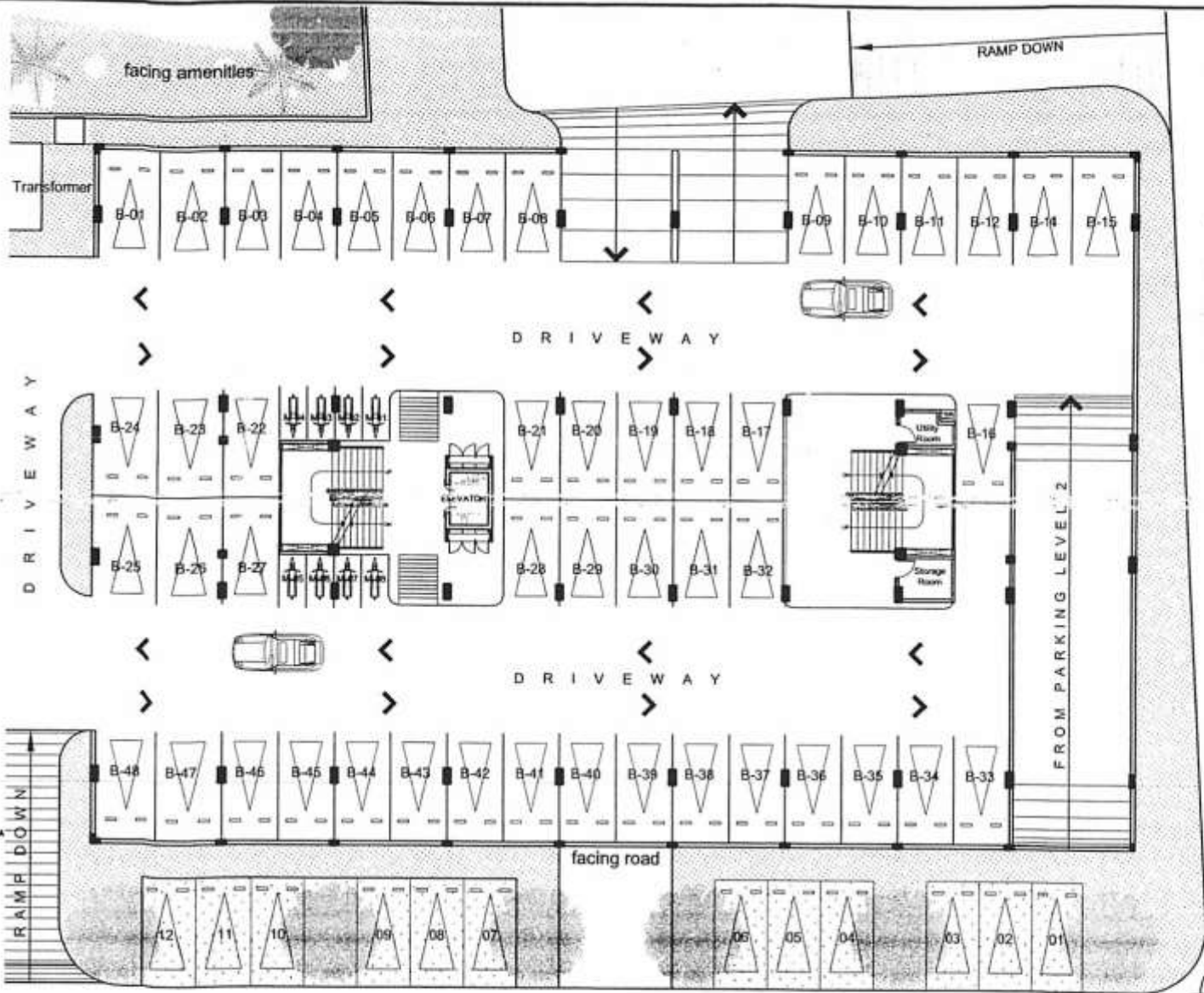


NO.	DATE	REVISIONS
05	08/30/12	Issued for reference
07	10/10/12	Deletion of parking slots due to ramp

NOTED BY:	
RMS	12 Oct 2012
GSA	15 Oct 2012



AVAILABILITY PLAN



KEYPLAN

BLDG. B - MARSALA
PARKING LEVEL 1 FLOOR PLAN
 OCTOBER 10 2012

Verawood
 Builders

AVAILABILITY PLAN



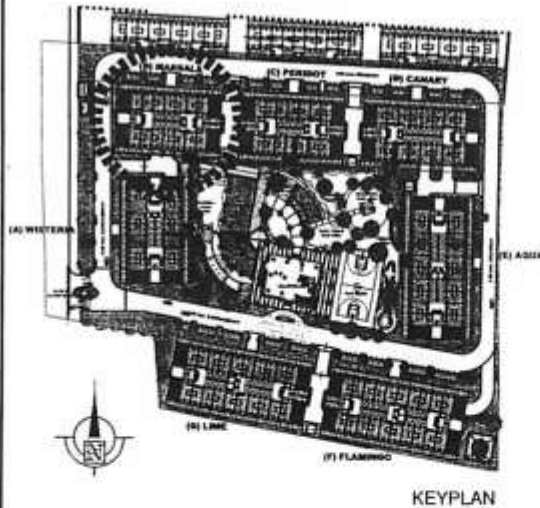
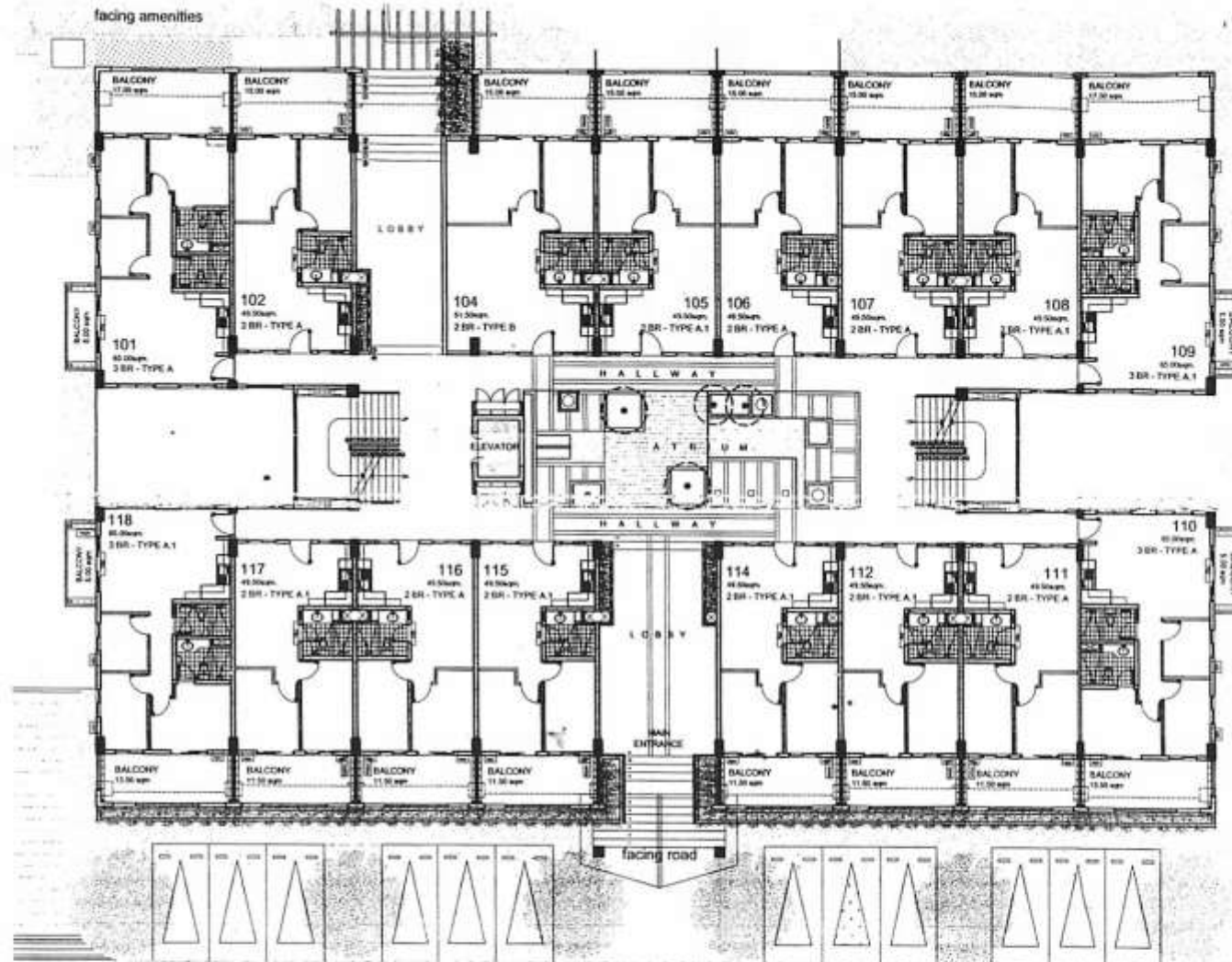
NO.	DATE	REVISIONS
00	10/31/12	Issued for reference
01	10/12/12	Deletion of parking stalls due to ramp

NOTED BY:	RMS	Allen	12 Oct
	GSA	g	15 Oct

UNIT LIST FOR POSSIBLE TANDEM:

105 & 106
115 & 116

NOTE: Subject to change upon availability of units and standard company policy regarding request for tandem.



KEYPLAN

BLDG. B - MARSALA
UPPER GROUND FLOOR PLAN
10 OCTOBER 2012

NO.	DATE	REVISIONS
00	08/2012	Issued for reference
01	10/10/12	Unit re-numbering

NOTED BY:	RMS	<i>RMS</i>	<i>12/2012</i>
	GSA	<i>GSA</i>	<i>10/10/12</i>



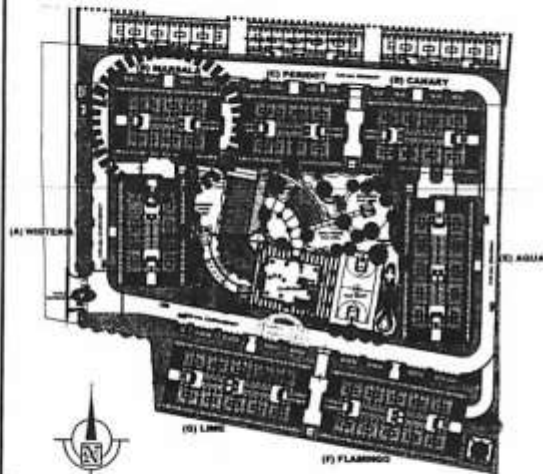
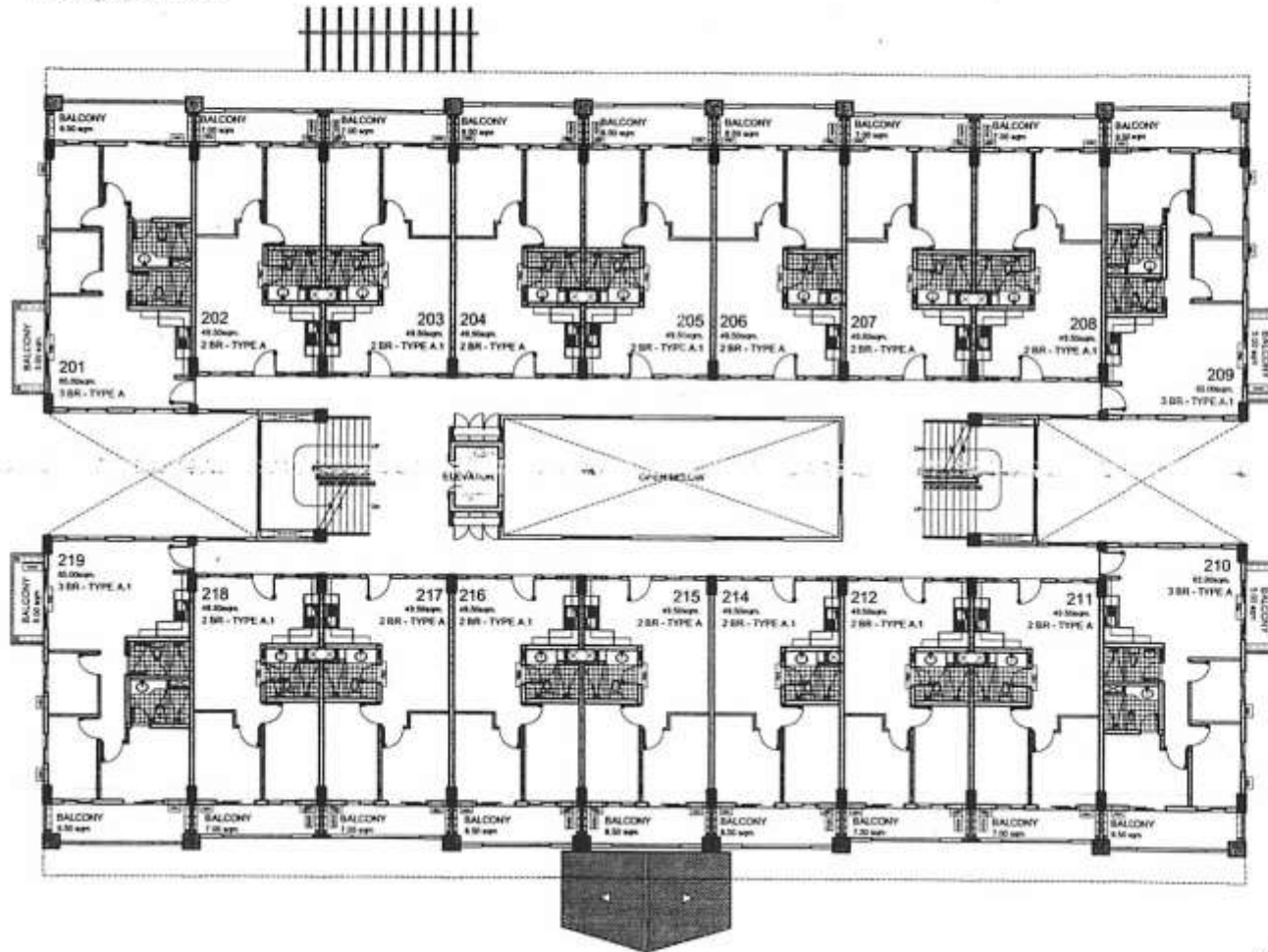
AVAILABILITY PLAN

facing amenities

UNIT LIST FOR POSSIBLE TANDEM:

- 203 & 204
- 205 & 206
- 214 & 215
- 216 & 217

NOTE: Subject to change upon availability of units and standard company policy regarding request for tandem.



KEYPLAN

facing road

BLDG. B - MARSALA
SECOND FLOOR PLAN
 10 OCTOBER 2012

NO.	DATE	REVISIONS
00	10/01/12	Issued for reference

NOTED BY:	
RMS	<i>Allen 12/07</i>
GSA	<i>ISDd</i>

Verawood
 BUILDINGS

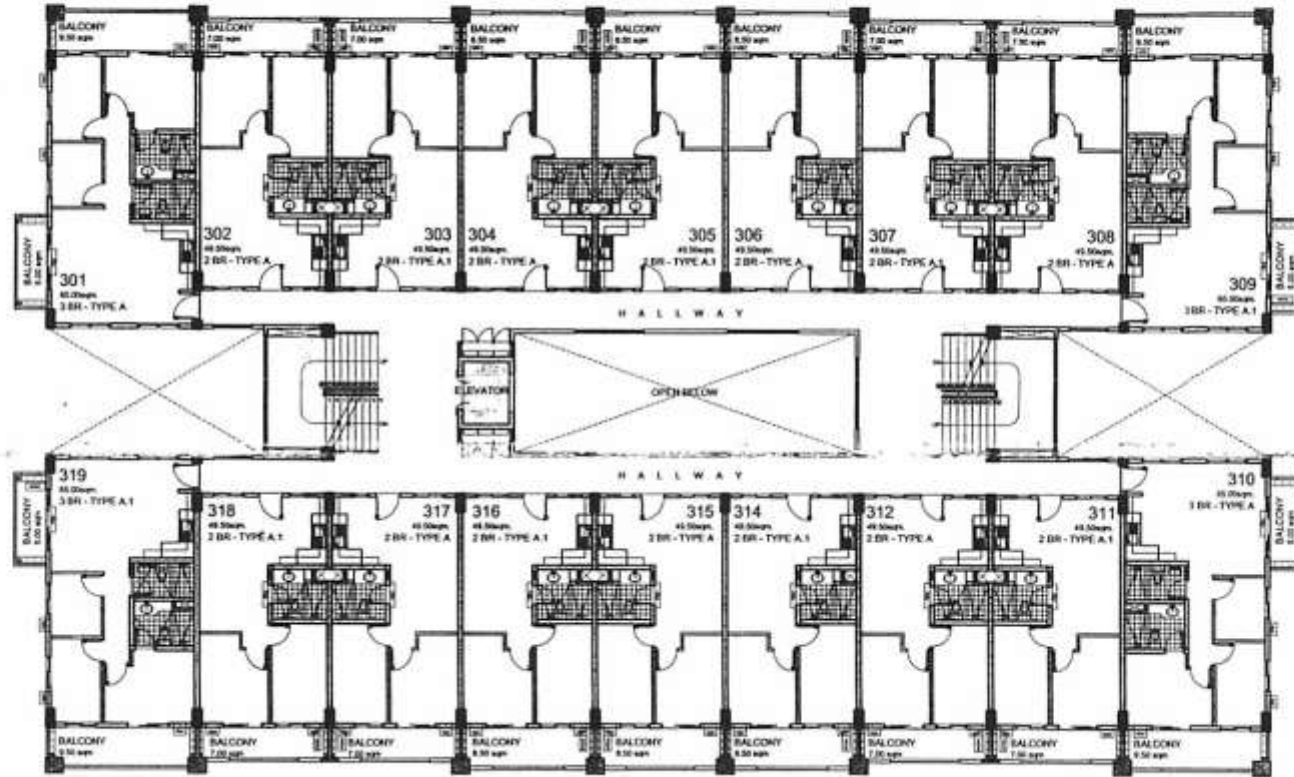
AVAILABILITY PLAN

facing amenities

UNIT LIST FOR POSSIBLE TANDEM:

- 303 & 304
- 305 & 306
- 314 & 315
- 316 & 317

NOTE: Subject to change upon availability of units and standard company policy regarding request for tandem.



KEYPLAN

facing road

BLDG. B - MARSALA
THIRD FLOOR PLAN

10 OCTOBER 2012



	NO.	DATE	REVISIONS
	00	10/10/12	Issued for reference
NOTED BY:			
RMS	[Signature]		
GSA	[Signature]		

Verawood
Residences

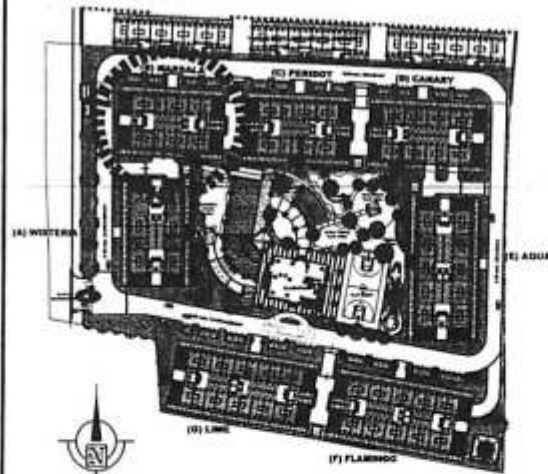
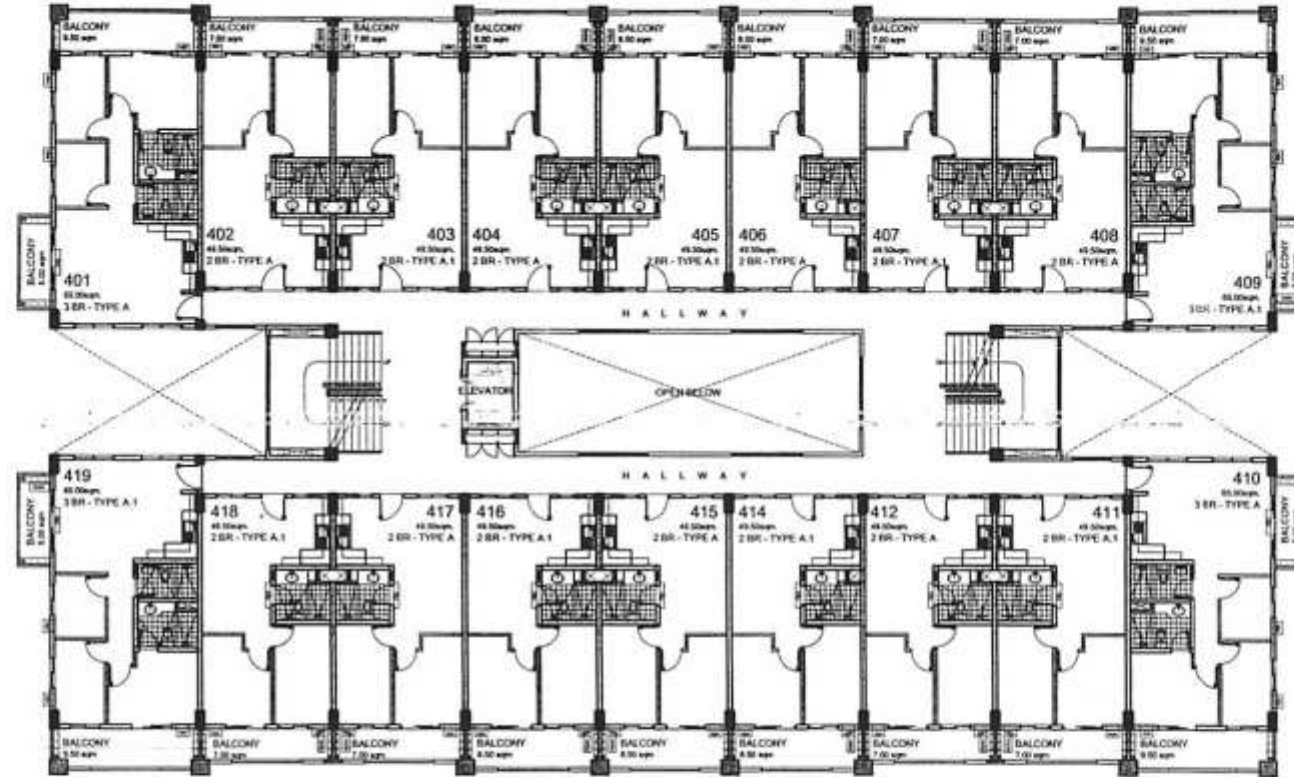
AVAILABILITY PLAN

facing amenities

UNIT FOR POSSIBLE TANDEM:

- 403 & 404
- 405 & 406
- 414 & 415
- 416 & 417

NOTE: Subject to change upon availability of units and standard company policy regarding request for tandem.



KEYPLAN

facing road

BLDG. B - MARSALA
FOURTH FLOOR PLAN

10 OCTOBER 2012



<p>DMCI HOMES Feels real good to be home</p>		NO.	DATE	REVISIONS
		00	10/01/12	Issued for reference
NOTED BY:				
RMS	<i>[Signature]</i>			
GSA	<i>[Signature]</i>			



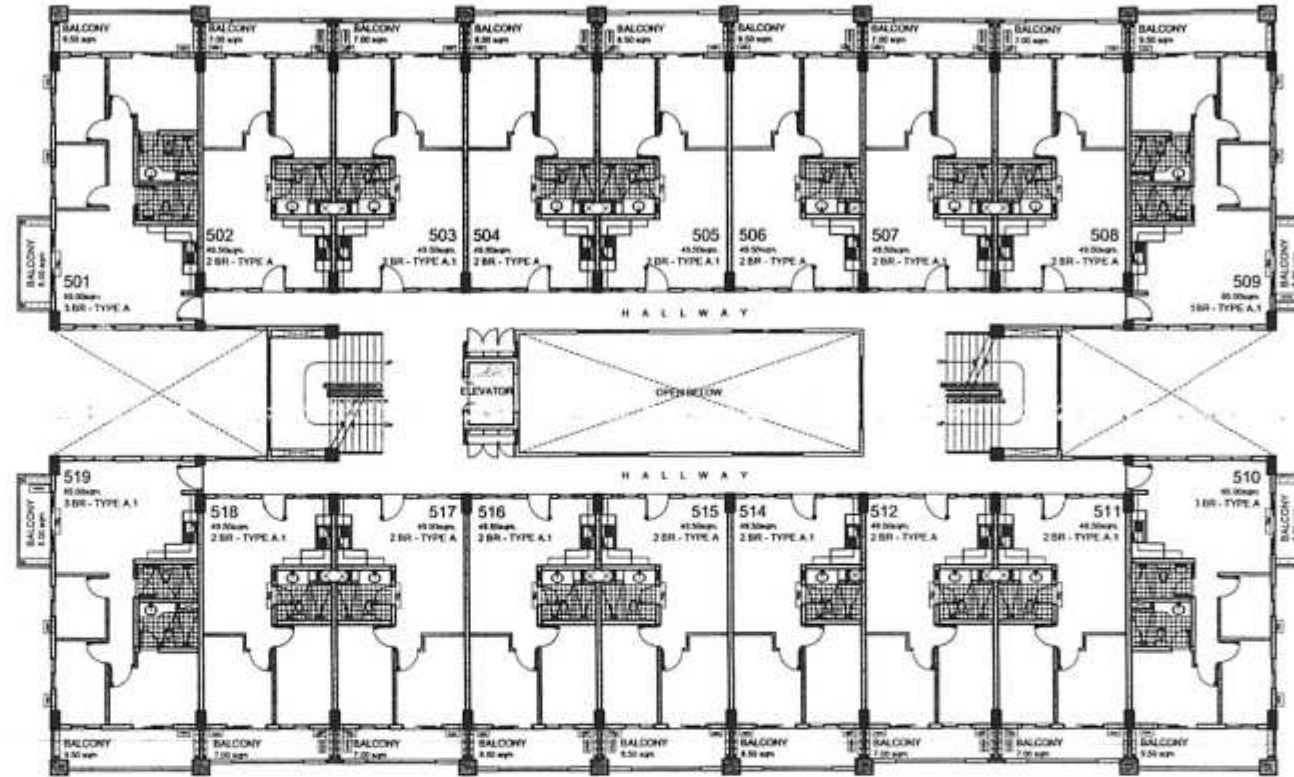
AVAILABILITY PLAN

facing amenities

UNIT LIST FOR POSSIBLE TANDEM:

- 503 & 504
- 505 & 506
- 514 & 515
- 516 & 517

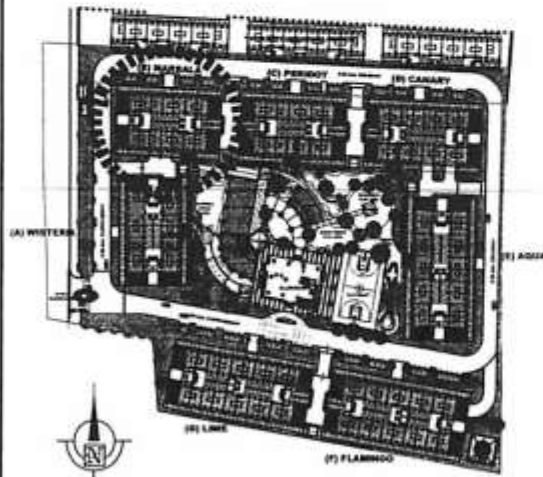
NOTE: Subject to change upon availability of units and standard company policy regarding request for tandem.



facing road

BLDG. B - MARSALA
FIFTH FLOOR PLAN

10 OCTOBER 2012



KEYPLAN



 DMCI HOMES		NO.	DATE	REVISIONS
		02	10/2012	Issued for reference
NOTED BY:				
RMS				
GSA				

Verawood
Residences

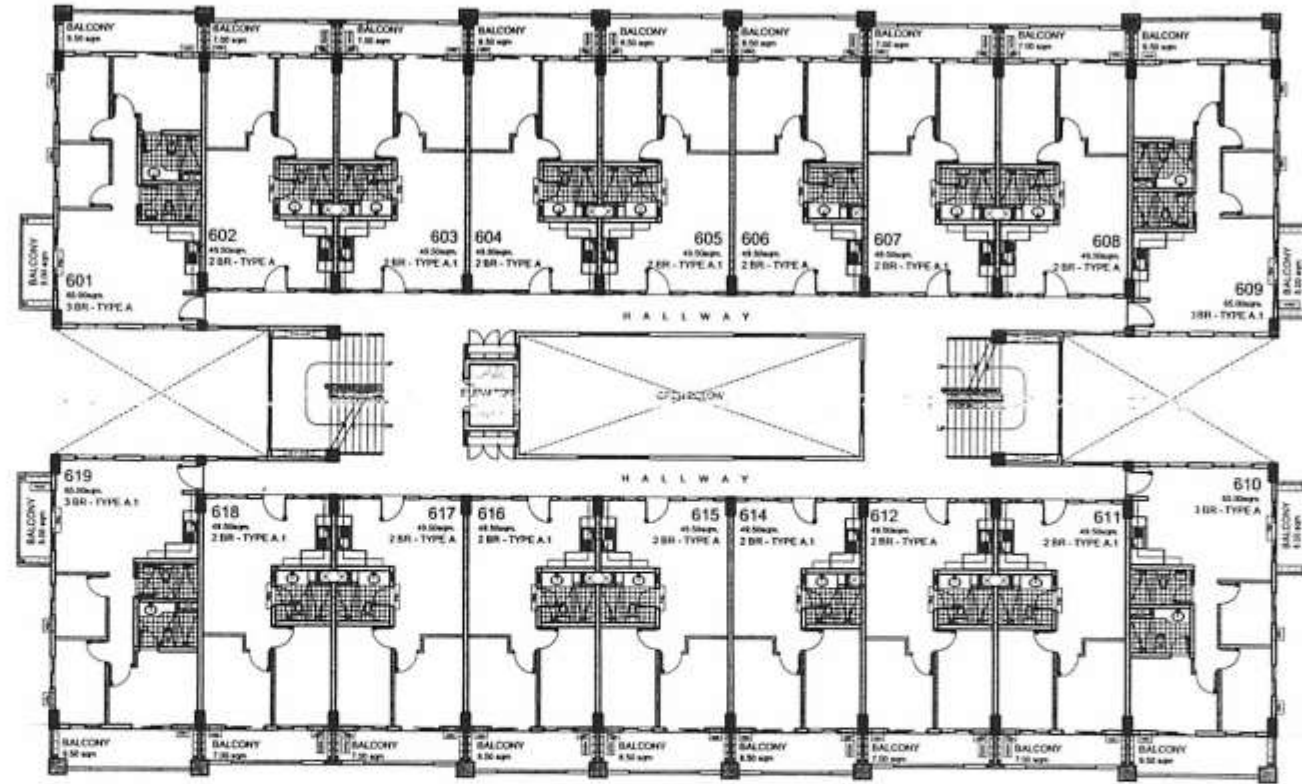
AVAILABILITY PLAN

facing amenities

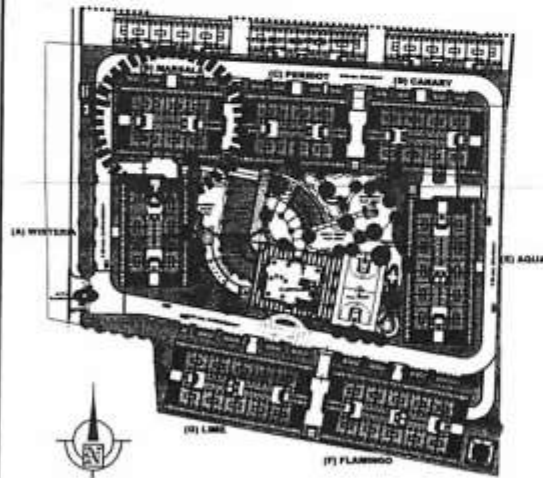
UNIT LIST FOR POSSIBLE TANDEM:

- 603 & 604
- 605 & 606
- 614 & 615
- 616 & 617

NOTE: Subject to change upon availability of units and standard company policy regarding request for tandem.



facing road



KEYPLAN

BLDG. B - MARSALA
SIXTH FLOOR PLAN

10 OCTOBER 2012

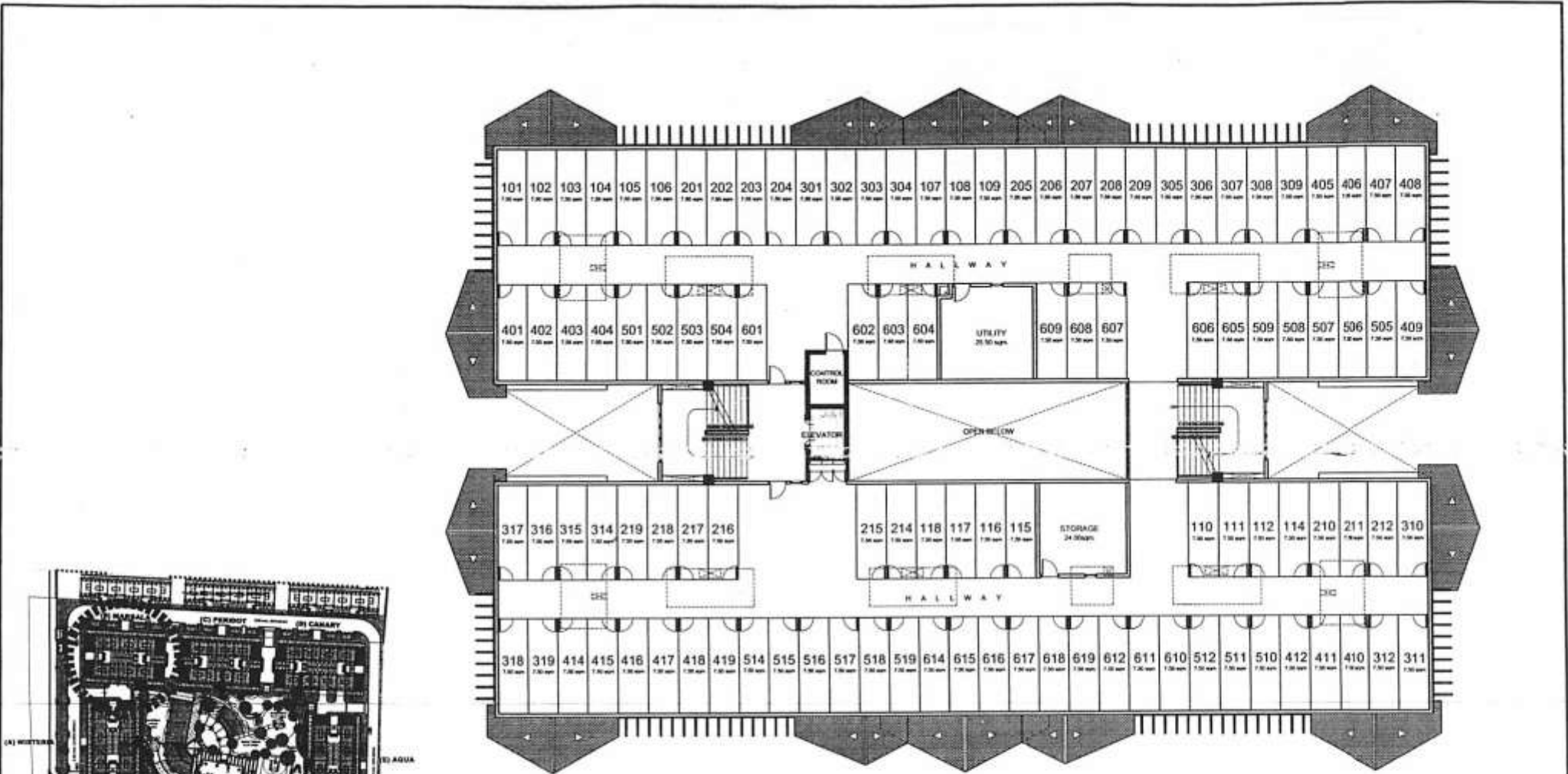


NO.	DATE	REVISIONS
00	101012	Issued for reference

NOTED BY:			
RMS	Allen	nar	
GSA	g	15 Oct	



AVAILABILITY PLAN



KEYPLAN

BLDG. B - MARSALA
ROOF DECK FLOOR
 10 OCTOBER 2012



 <i>Feels real good to be home</i>	NO.	DATE	REVISIONS
	00	08/2012	Issued for reference
	01	10/012	Laundry Cages to numbering
NOTED BY:			
RMS		<i>Allen 12/07</i>	
GSA		<i>g rod</i>	



AVAILABILITY PLAN