

**BLDG. A - WISTERIA**  
**PARKING LEVEL 1 FLOOR PLAN**  
 30 AUGUST 2012



AVAILABILITY PLAN



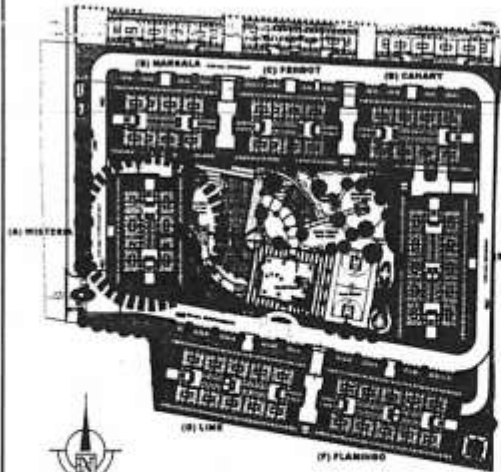
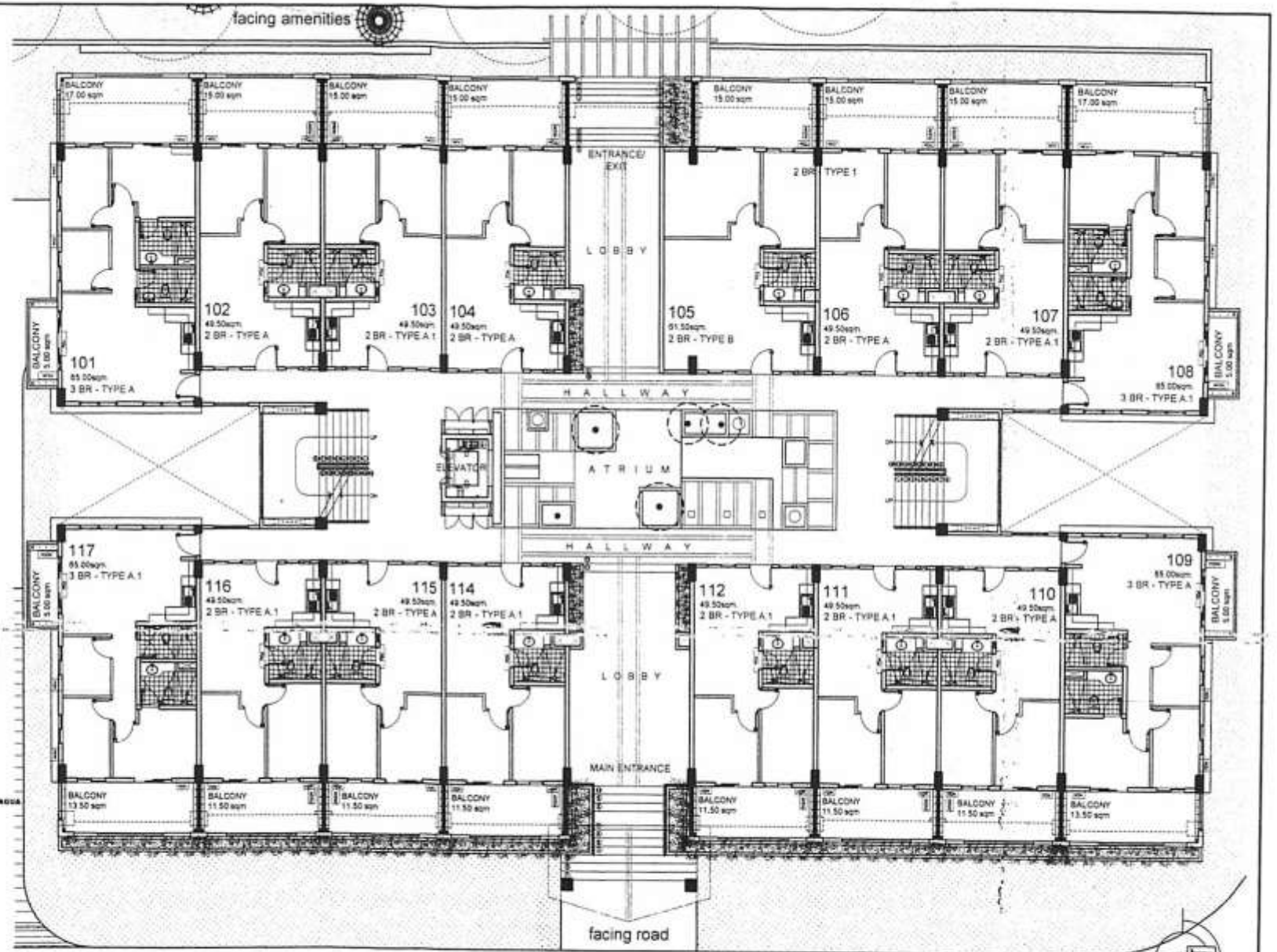
NO.	DATE	REVISIONS
06	08/30/12	Issued for Reference

NOTED BY:	
RMS	<i>[Signature]</i> 31 Aug
GSA	<i>[Signature]</i> 24 Aug

**UNIT LIST FOR POSSIBLE TANDEM:**

103 & 104  
114 & 115

NOTE: Subject to change upon availability of units and standard company policy regarding request for tandem.



KEY PLAN

**BLDG. A - WISTERIA**  
UPPER GROUND FLOOR PLAN  
30 AUGUST 2012



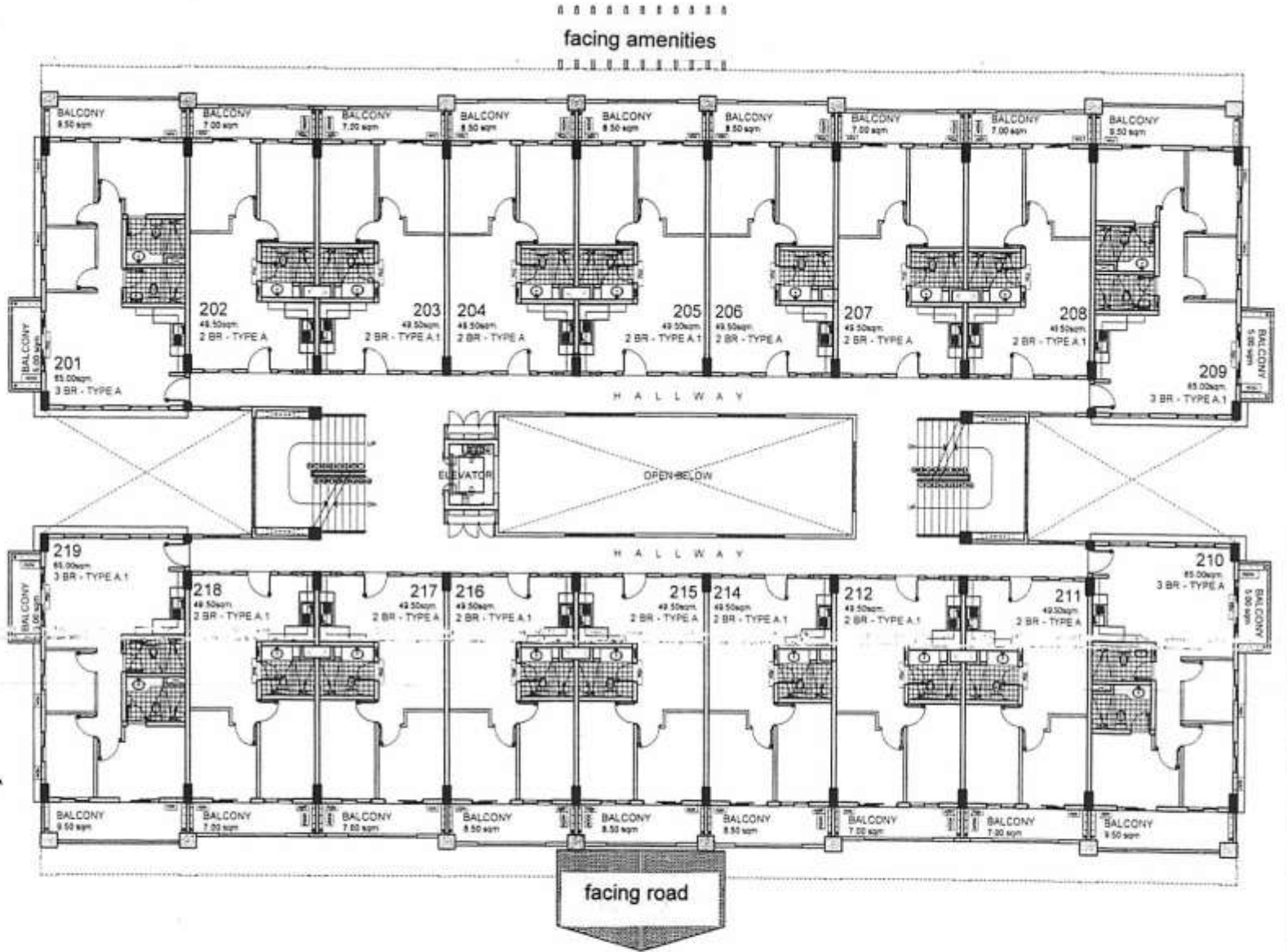
AVAILABILITY PLAN

	NO.	DATE	REVISIONS
	00	30/08/12	REVISIONS
	NOTED BY:	RMS	31/08
		GSA	31/08

UNIT LIST FOR POSSIBLE TANDEM:

- 203 & 204
- 205 & 206
- 214 & 215
- 216 & 217

NOTE: Subject to change upon availability of units and standard company policy regarding request for tandem.



KEY PLAN

**BLDG. A - WISTERIA**  
**SECOND FLOOR PLAN**  
 30 AUGUST 2012



AVAILABILITY PLAN



3

NO.	DATE	REVISIONS
01	080812	Issued for reference

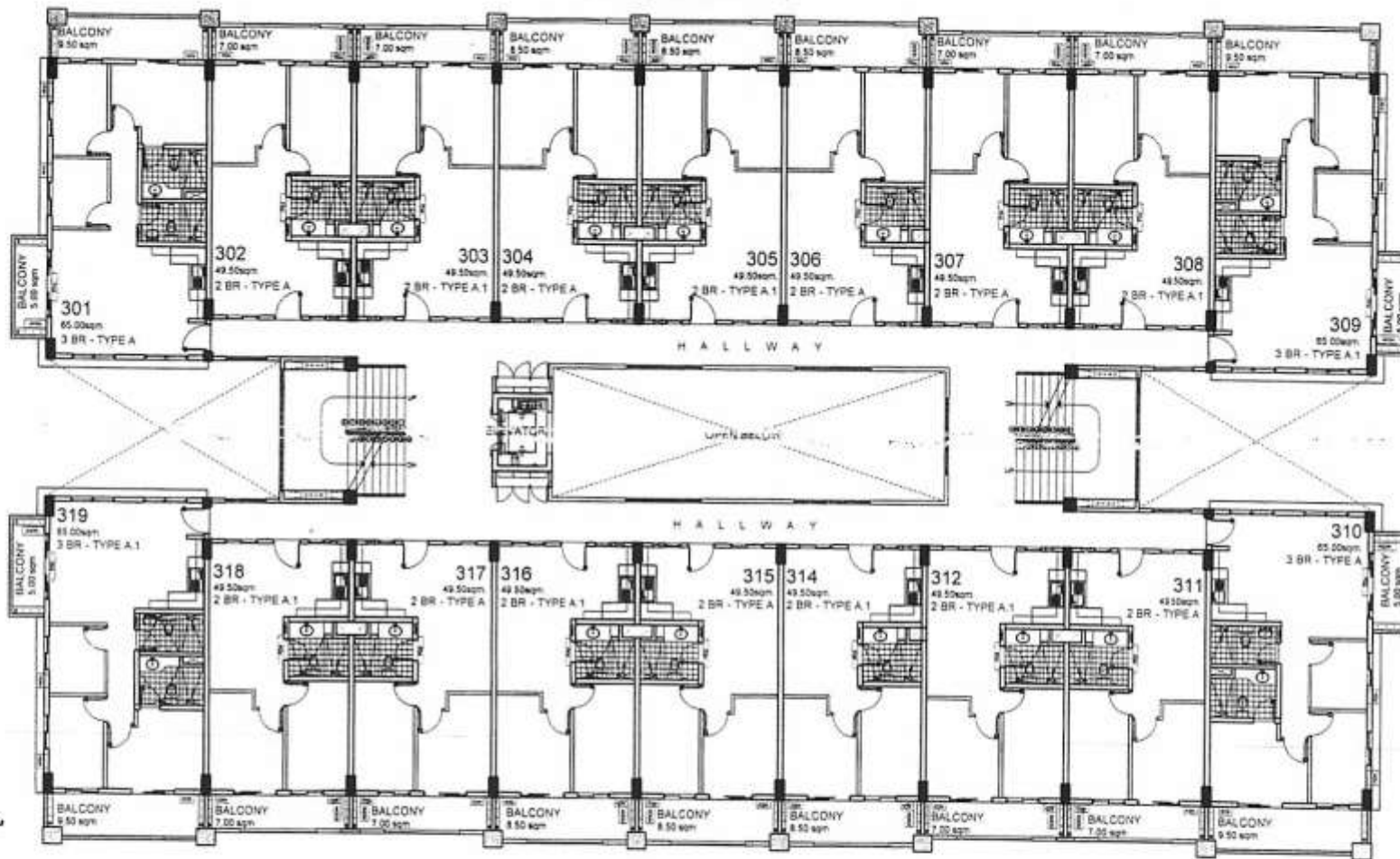
NOTED BY:		
RMS	<i>[Signature]</i>	31/08
GSA	<i>[Signature]</i>	21/08

facing amenities

UNIT LIST FOR POSSIBLE TANDEM:

- 303 & 304
- 305 & 306
- 314 & 315
- 316 & 317

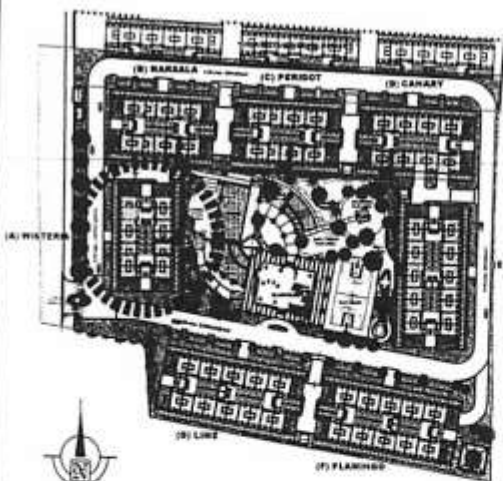
NOTE: Subject to change upon availability of units and standard company policy regarding request for tandem.



facing road

BLDG. A - WISTERIA  
THIRD FLOOR PLAN

30 AUGUST 2012



KEY PLAN



NO.	DATE	REVISIONS
00	030012	Issued for reference

NOTED BY:	RMS	31/8/12
	GSA	31/8/12



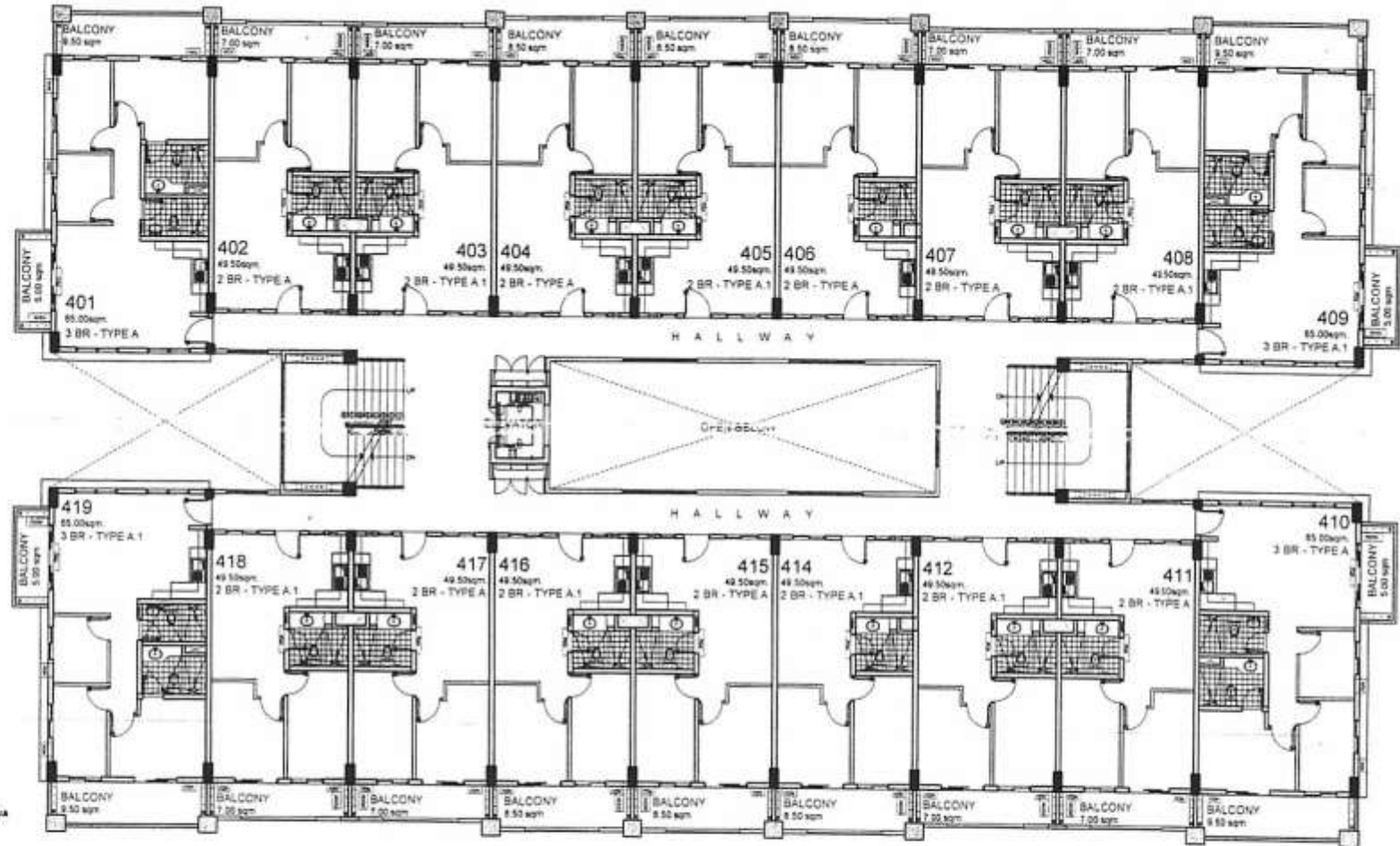
AVAILABILITY PLAN

facing amenities

UNIT LIST FOR POSSIBLE TANDEM:

- 403 & 404
- 405 & 406
- 414 & 415
- 416 & 417

NOTE: Subject to change upon availability of units and standard company policy regarding request for tandem.

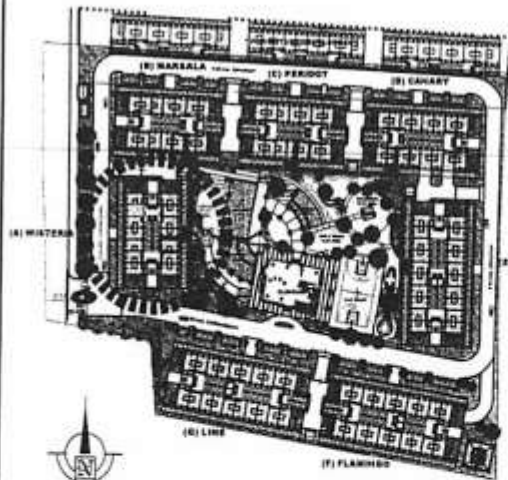


facing road

BLDG. A - WISTERIA

FOURTH FLOOR PLAN

30 AUGUST 2012

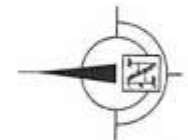


KEY PLAN



NO.	DATE	REVISIONS
01	08/30/12	Issued for reference

NOTED BY:  
 RMS [Signature]  
 GSA [Signature]



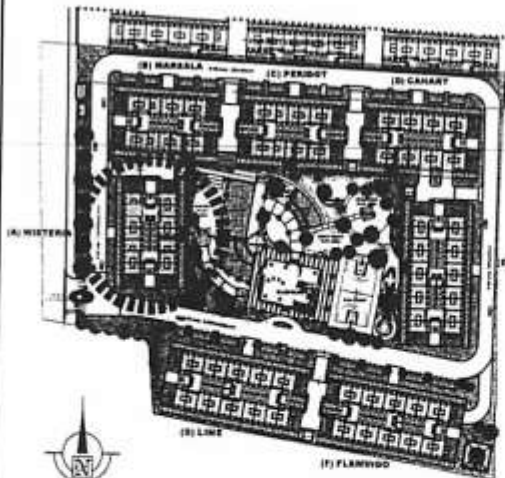
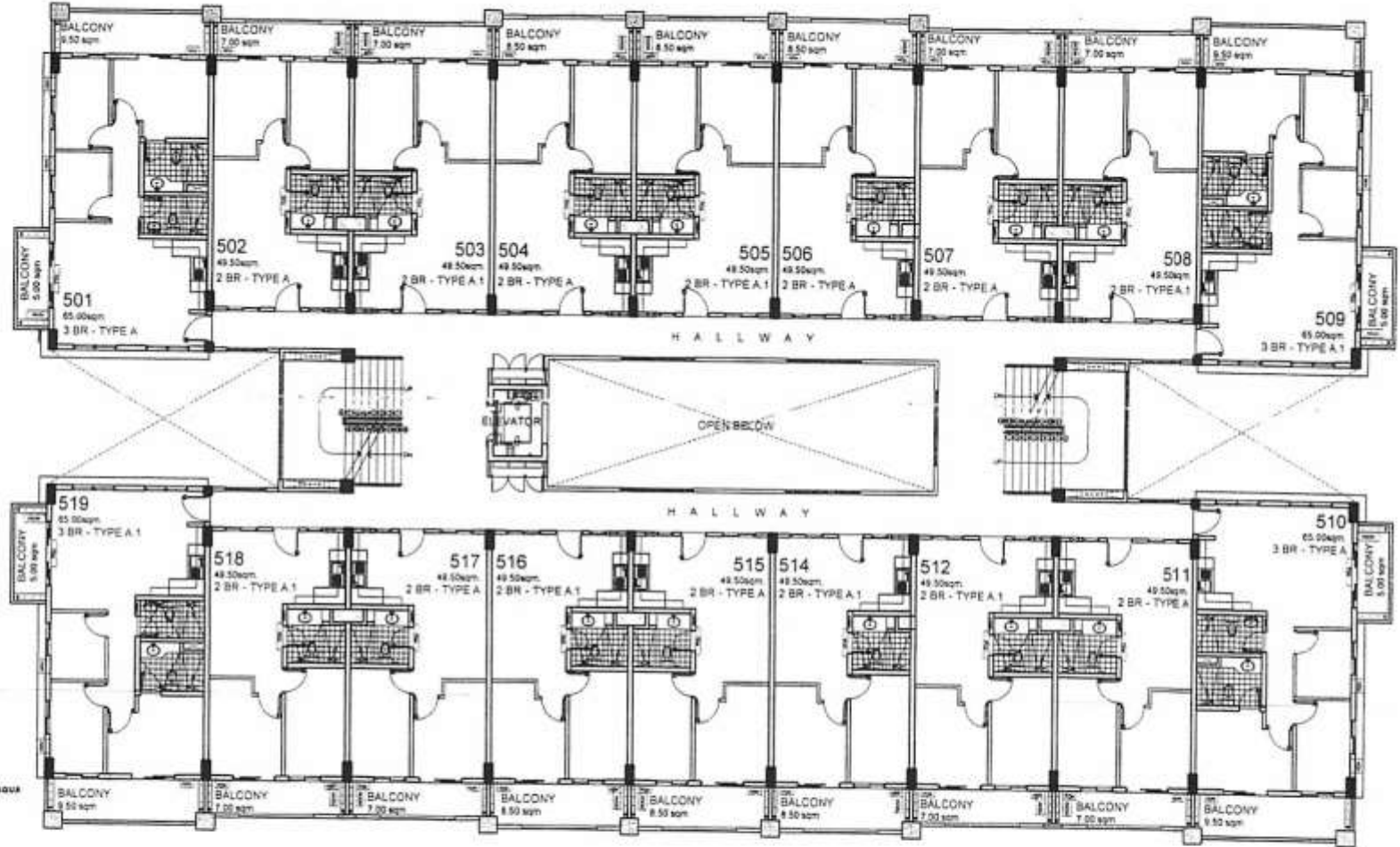
AVAILABILITY PLAN

facing amenities

UNIT LIST FOR POSSIBLE TANDEM:

- 503 & 504
- 505 & 506
- 514 & 515
- 516 & 517

NOTE: Subject to change upon availability of units and standard company policy regarding request for tandem



KEY PLAN

facing road

**BLDG. A - WISTERIA**  
**FIFTH FLOOR PLAN**  
 30 AUGUST 2012

<p>DMCI HOMES Feels real good to be home</p>	<p>3</p>	NO.	DATE	REVISIONS
		00	28/02/12	Issued for reference
NOTED BY:		RMS	[Signature]	
		GSA	[Signature]	

*Verawood*  
Real Estate

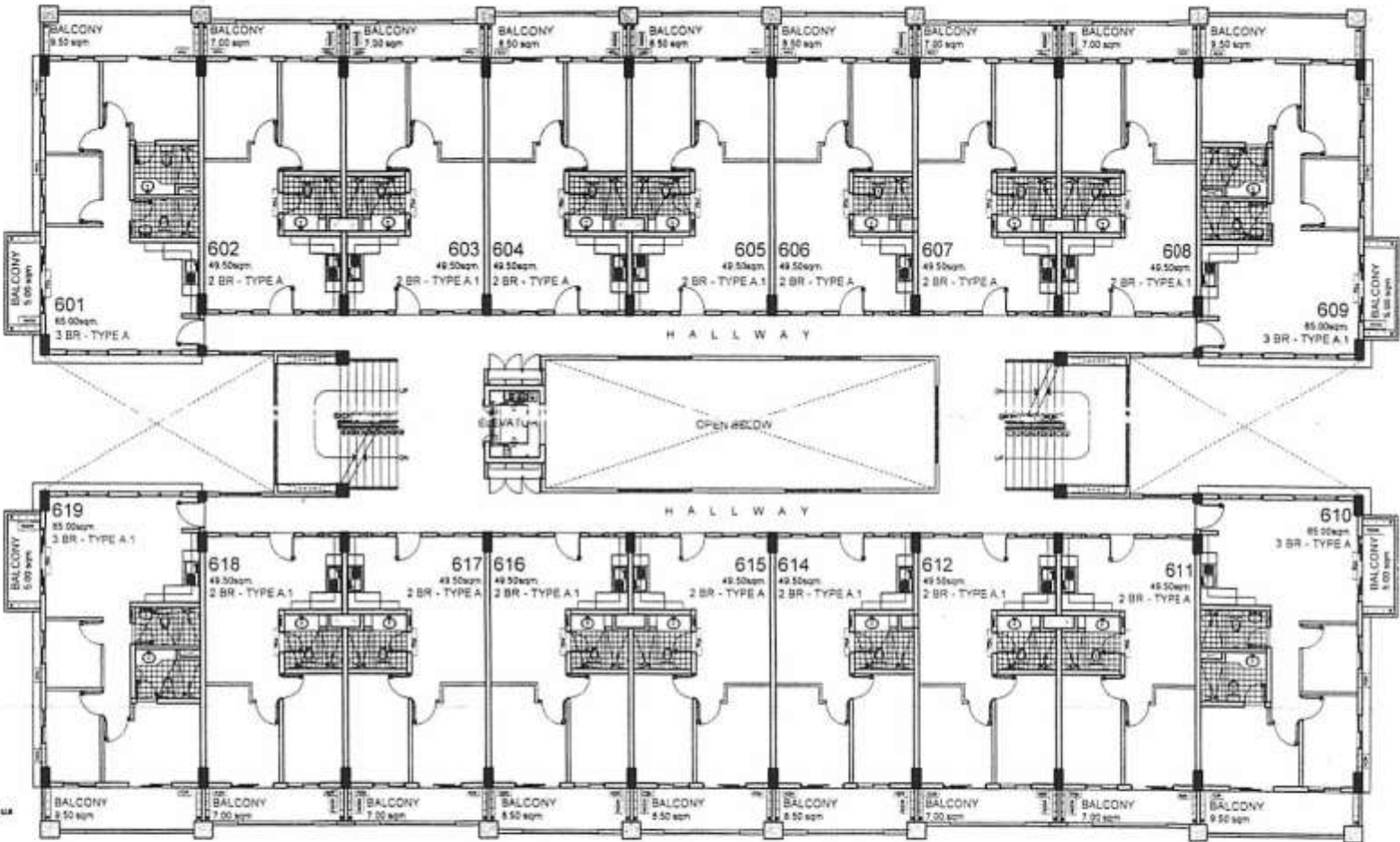
AVAILABILITY PLAN

facing amenities

UNIT LIST FOR POSSIBLE TANDEM:

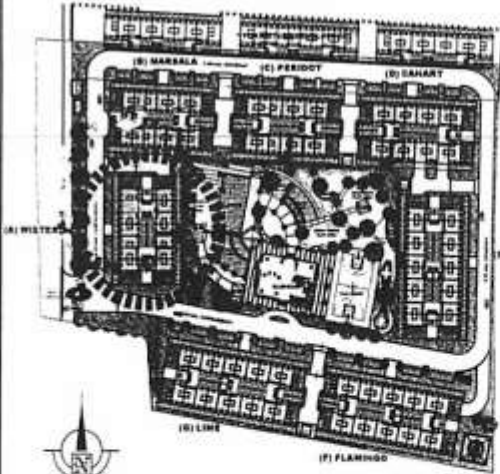
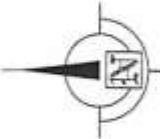
- 603 & 604
- 605 & 606
- 614 & 615
- 616 & 617

NOTE: Subject to change upon availability of units and standard company policy regarding request for tandem.



facing road

**BLDG. A - WISTERIA**  
**SIXTH FLOOR PLAN**  
 30 AUGUST 2012

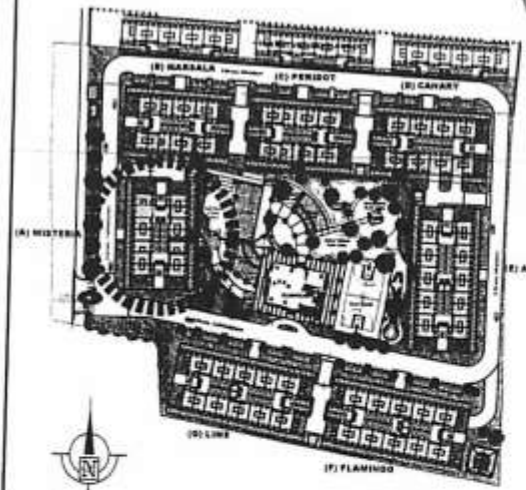
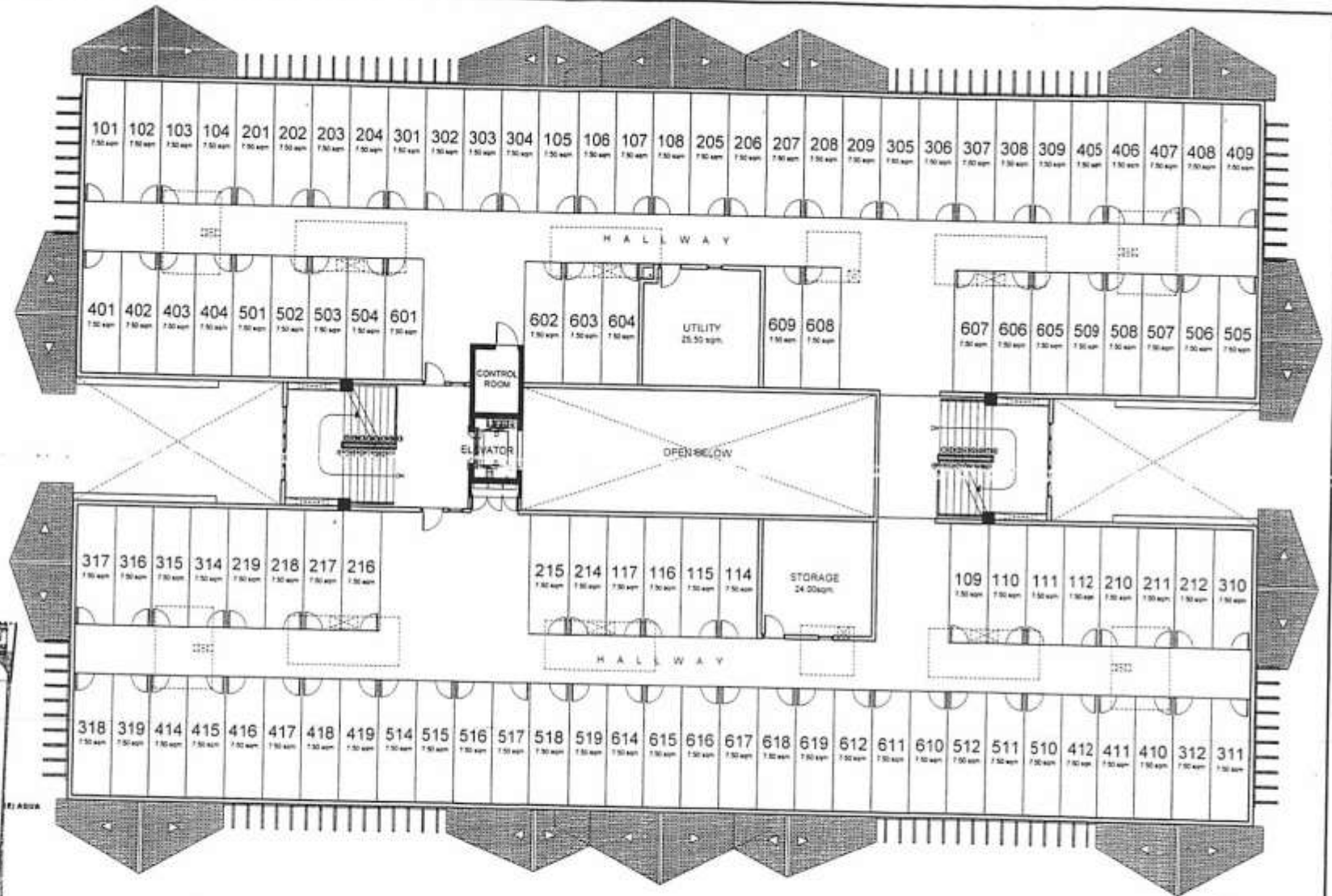


KEY PLAN

 <i>Feels real good to be home</i>	NO. DATE REVISIONS	NOTED BY: RMS <i>[Signature]</i> 21 AUG GSA <i>[Signature]</i> 31 AUG
	001 083212 Issued for reference	

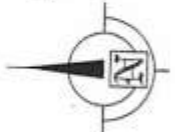


AVAILABILITY PLAN



KEY PLAN

**BLDG. A - WISTERIA**  
**ROOF DECK PLAN**  
 30 AUGUST 2012



 <i>Facts real good to be home</i>	VOL. DATE REVISIONS 00 / 08012 Issued for reference
	NOTED BY: RMS <i>[Signature]</i> 31 AUG GSA <i>[Signature]</i> 31 AUG



AVAILABILITY PLAN