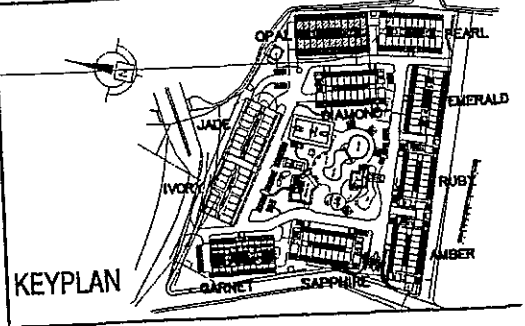
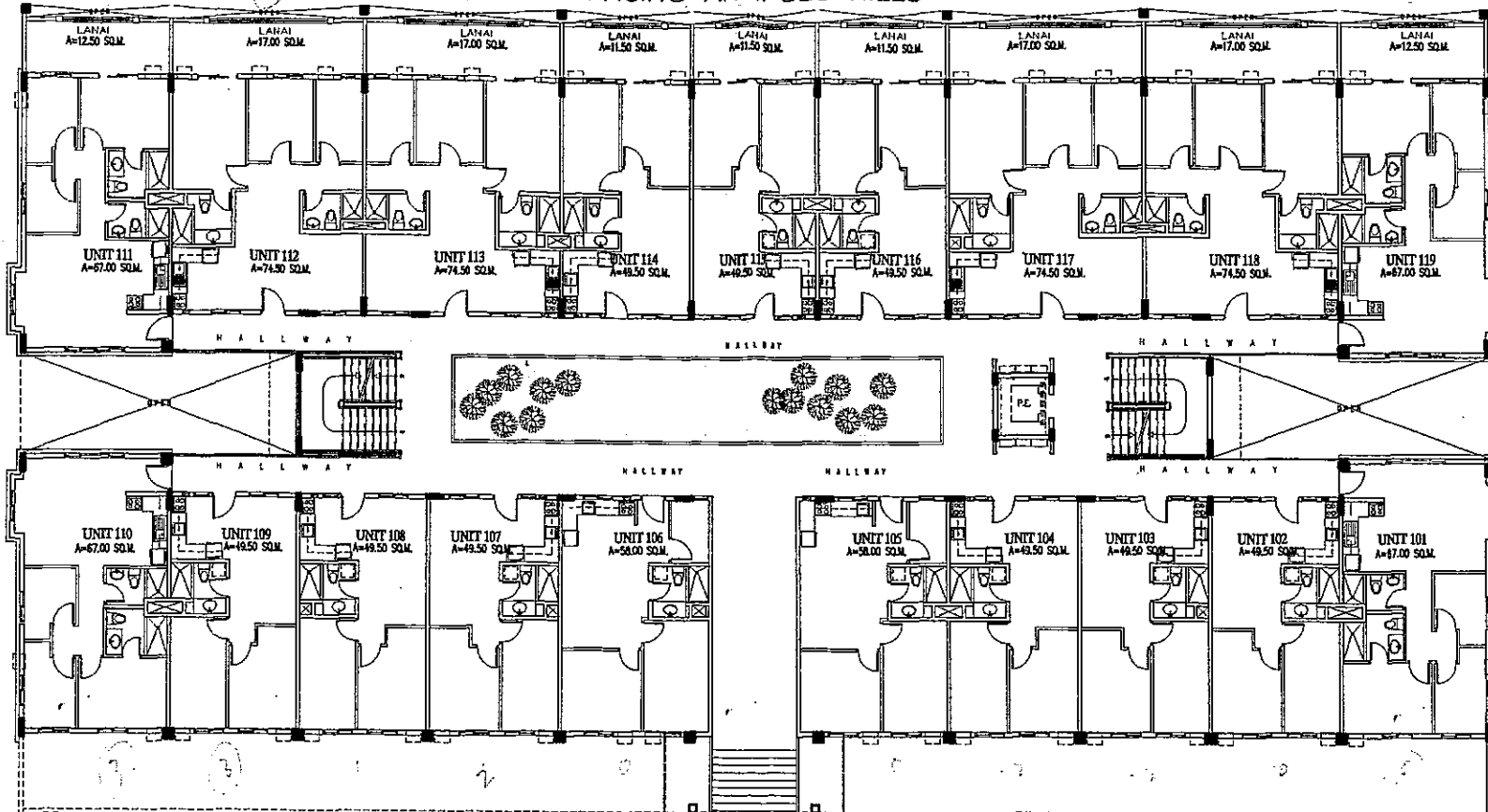


Rosewood Pointe
 BLDG. E (OPAL) - LOWER GROUND FLOOR PLAN
 25 APRIL 2007

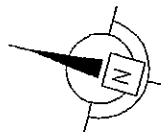


gdn
 NY
 4/26

FACING ANTIPOLO HILLS



FACING BLDG. J

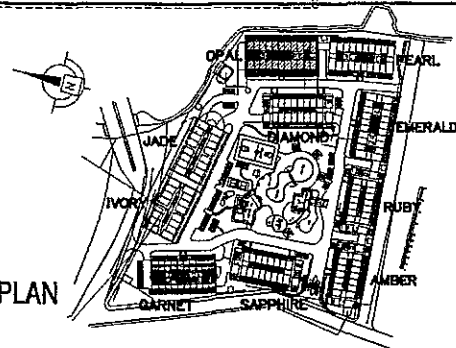


Rosewood Pointe
 BLDG. E (OPAL) - UPPER GROUND FLOOR PLAN

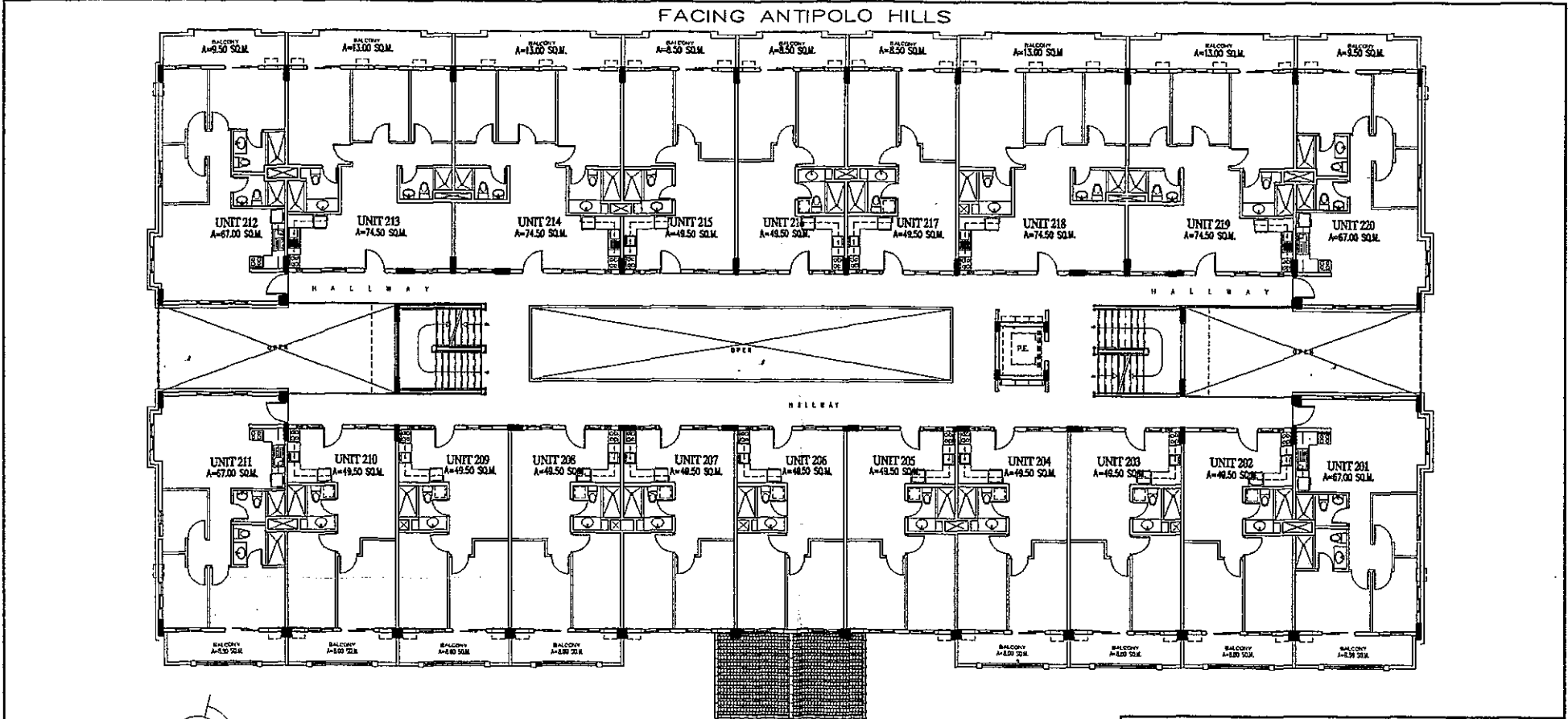
25 APRIL 2007

SHB

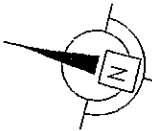
KEYPLAN



QCP 4/16

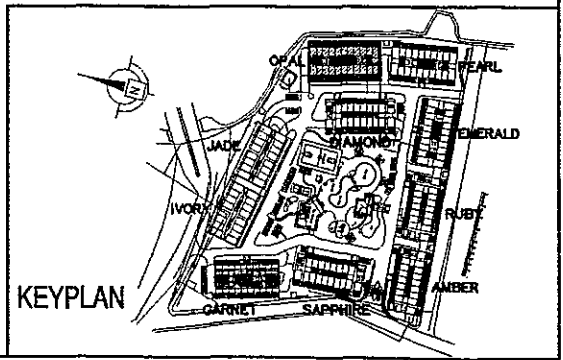


FACING BLDG. J



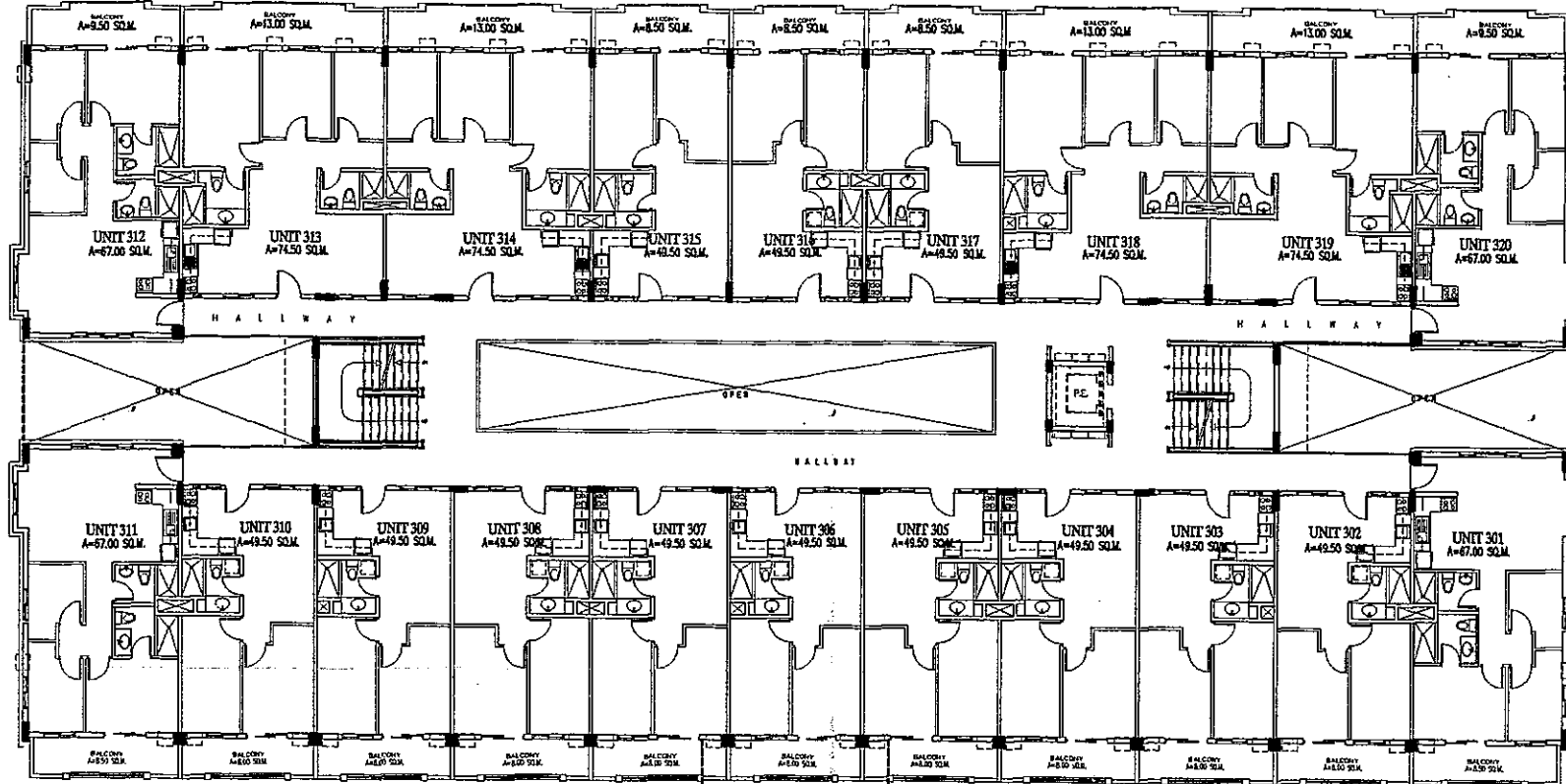
Rosewood Pointe
BLDG. E (OPAL) - SECOND FLOOR PLAN
 25 APRIL 2007

John
4/26

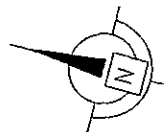


KEYPLAN

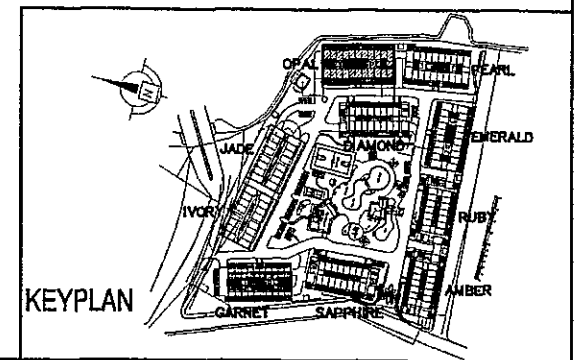
FACING ANTIPOLO HILLS



FACING BLDG. J

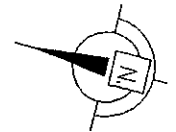
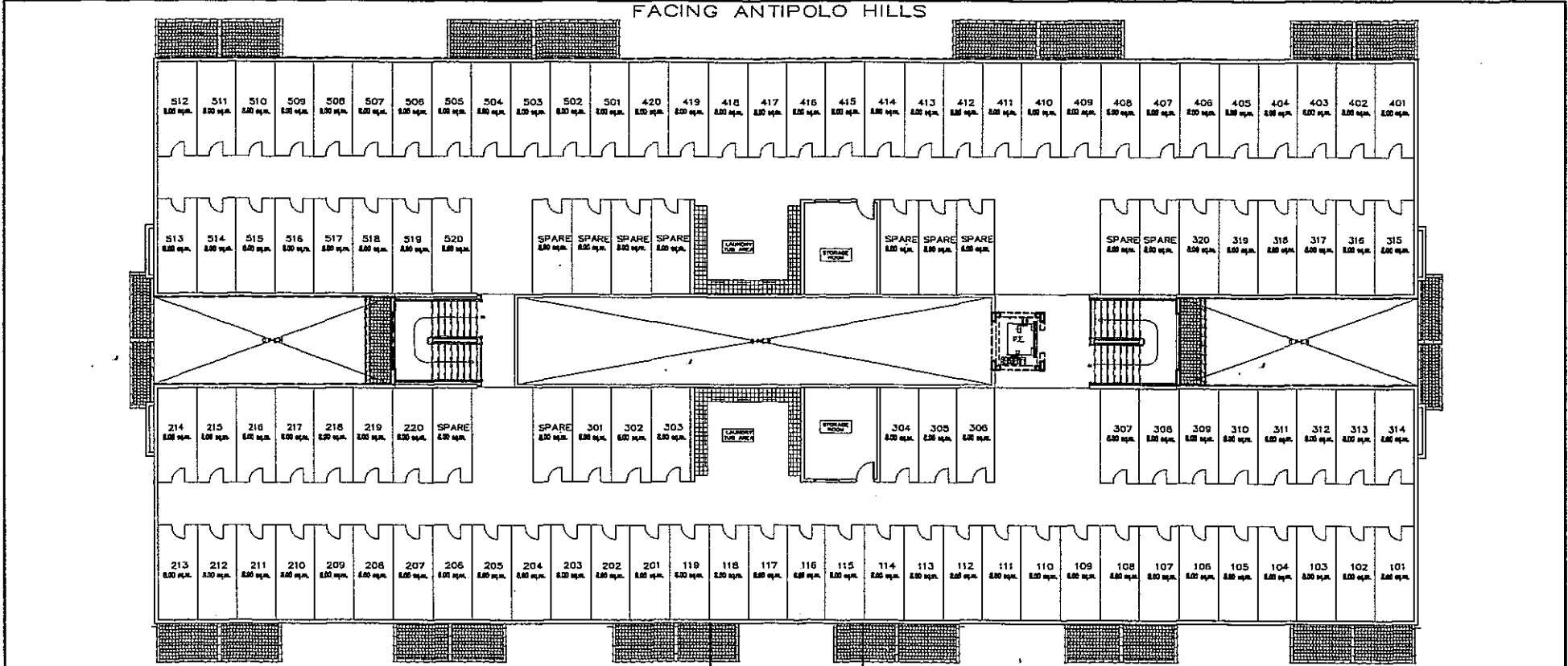


Rosewood Pointe
 BLDG. E (OPAL) - THIRD - FIFTH FLOOR PLAN
 25 APRIL 2007

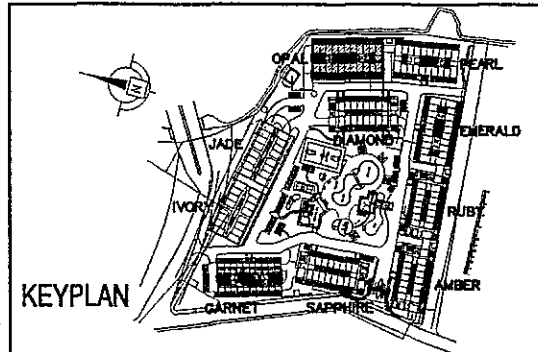


KEYPLAN

gln
 4/28



Rosewood Pointe
BLDG. E (OPAL) - ROOF DECK FLOOR PLAN
 25 APRIL 2007



Handwritten initials and date:
 [Signature] 4/25
 4/26