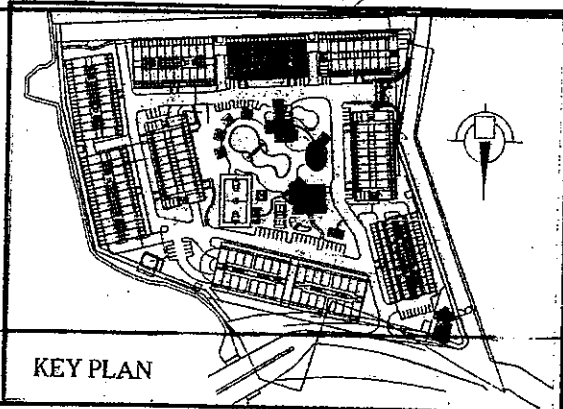


D.M. CONSUNJI, INC.
 ENGINEERS - CONTRACTORS
 2281 AASONG TAMO EXTENSION, MAKATI CITY
 TEL. NO.: 841-0841

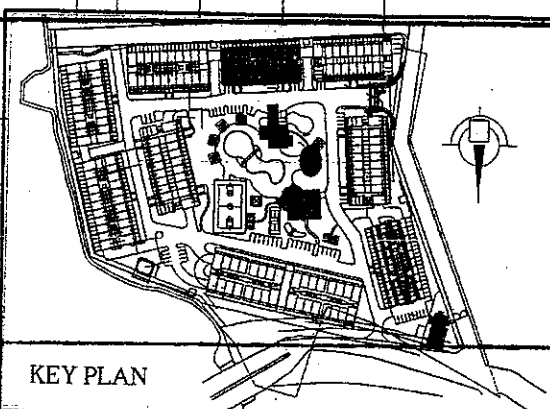
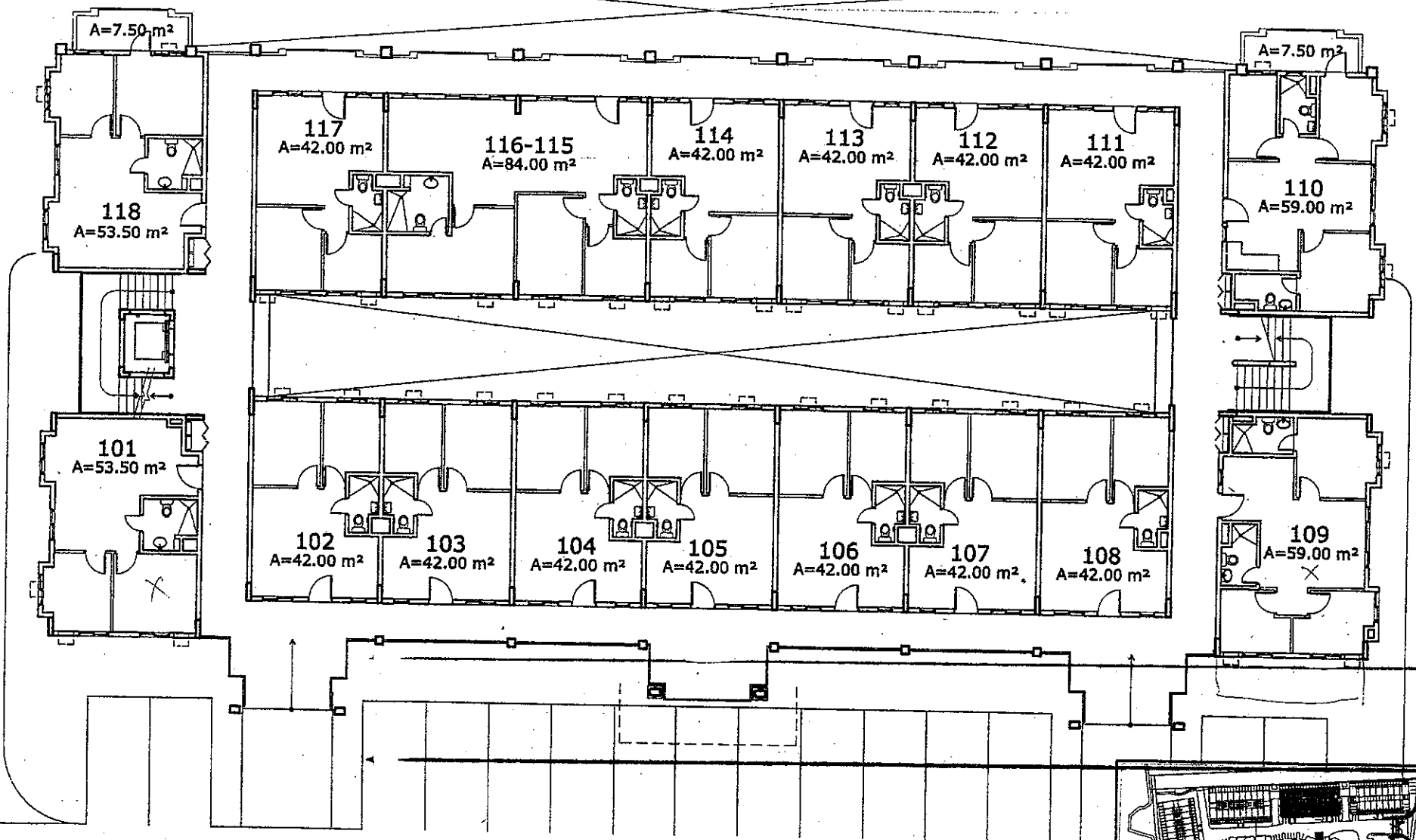
Rosewood Pointe
BLDG. B - LOWER GROUND FLOOR PLAN


20 OCTOBER 2006

ANON



KEY PLAN

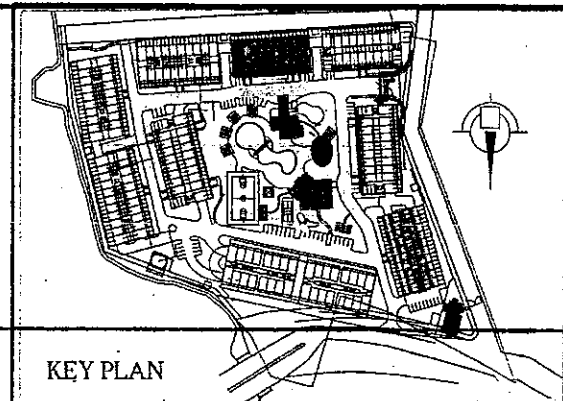
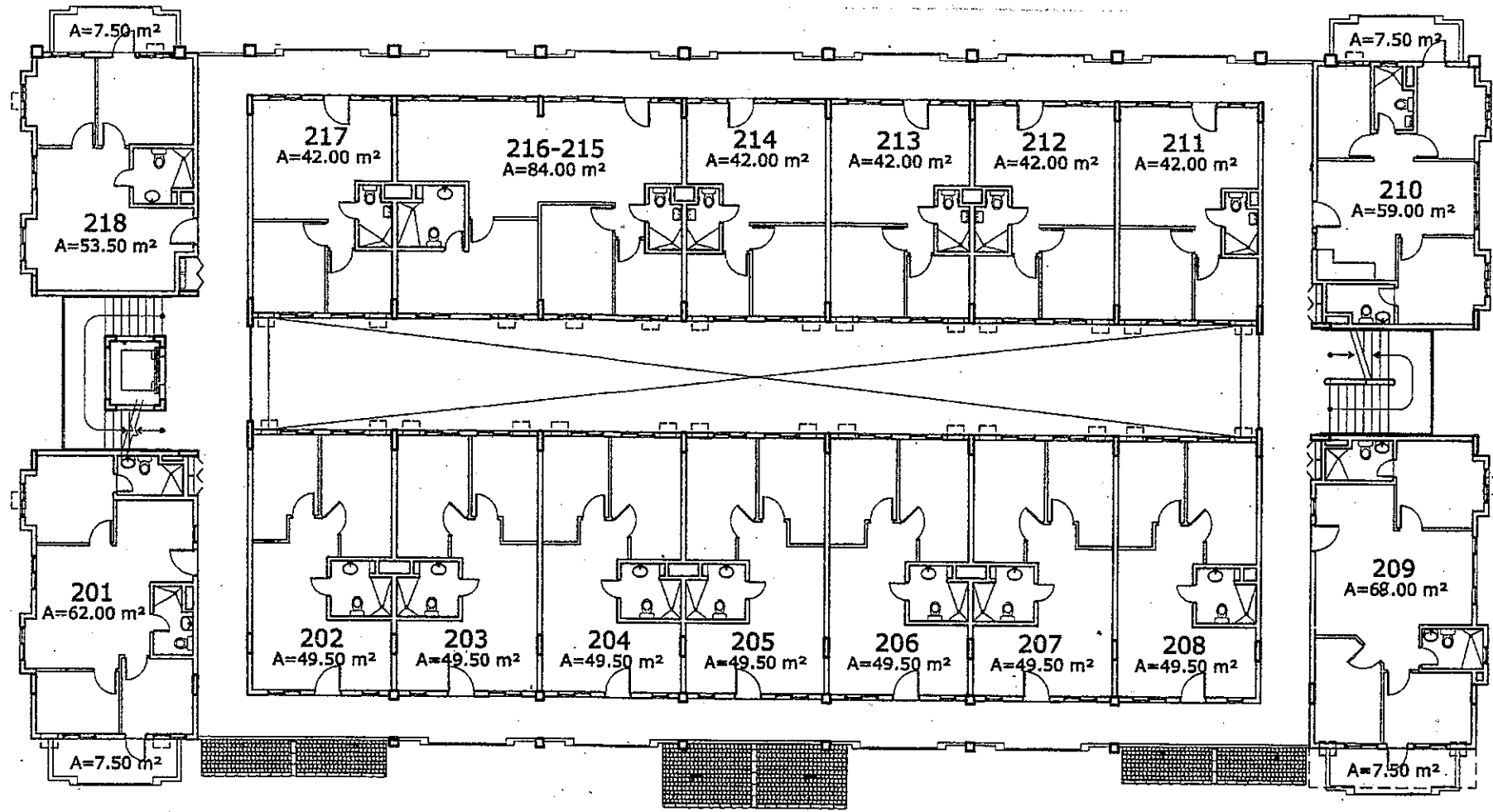



D.M. CONSUNJI, INC.
 ENGINEERS • CONTRACTORS
 2281 AASONG TAMO EXTENSION, MAKATI CITY
 TEL. NO.: 841-0841

Rosewood Pointe
BLDG. B - UPPER GROUND FLOOR PLAN

13 MARCH 2006 *and dmn*

KEY PLAN

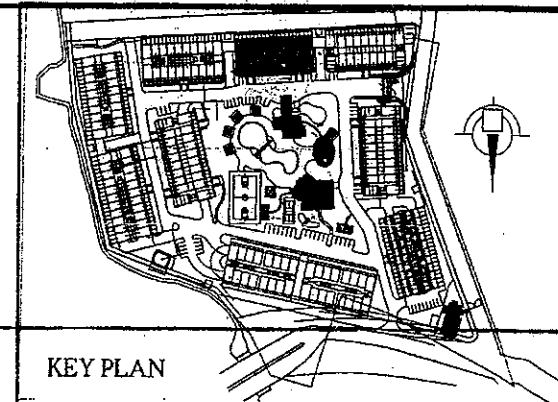
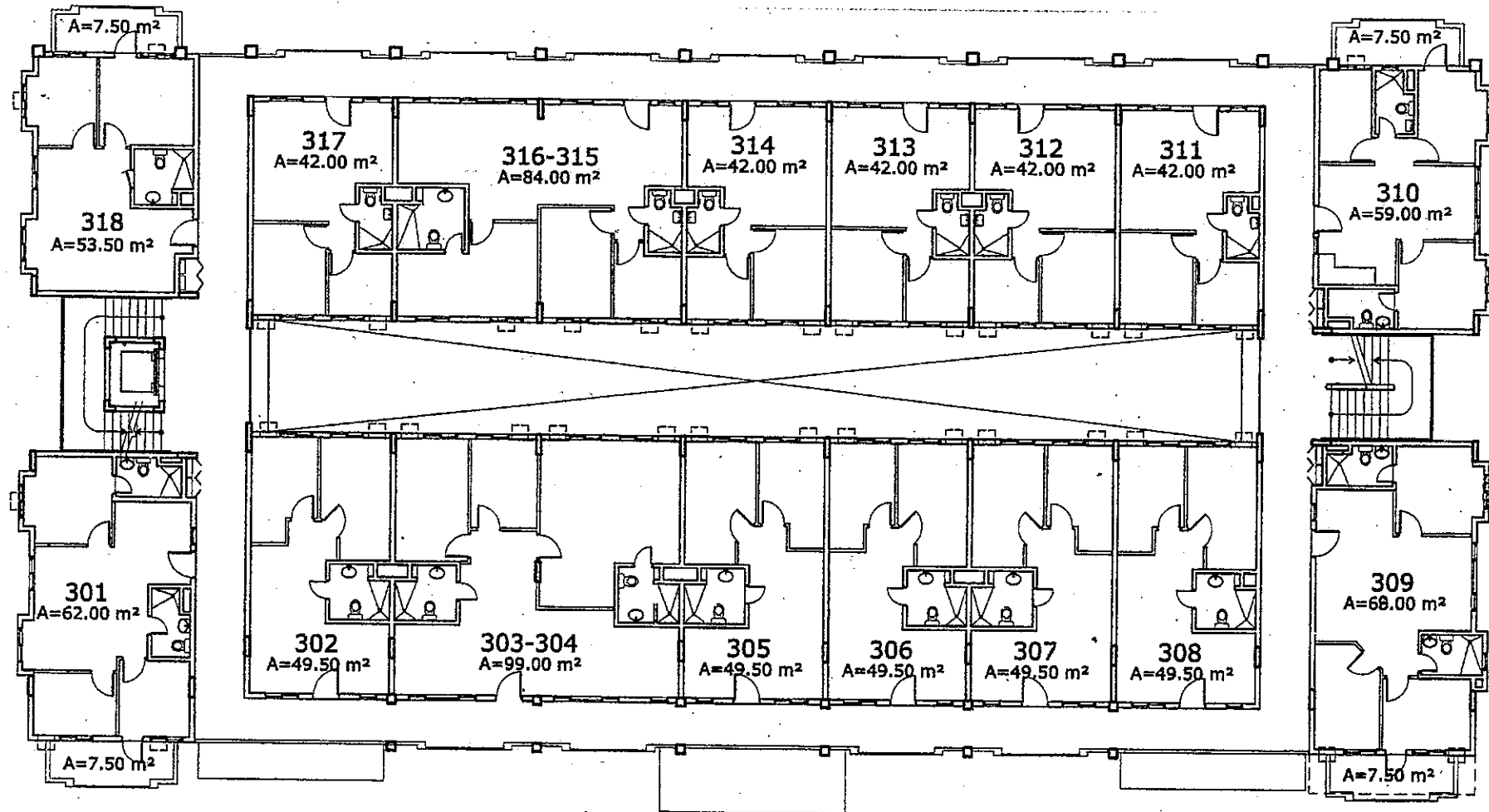


D.M. CONSUNJI, INC.
 ENGINEERS - CONTRACTORS
 2281 AASONG TAMO EXTENSION, MAKATI CITY
 TEL. NO.: 841-0841

Rosewood Pointe
BLDG. B - SECOND FLOOR PLAN

13 MARCH 2006 *OHY* *Albu*

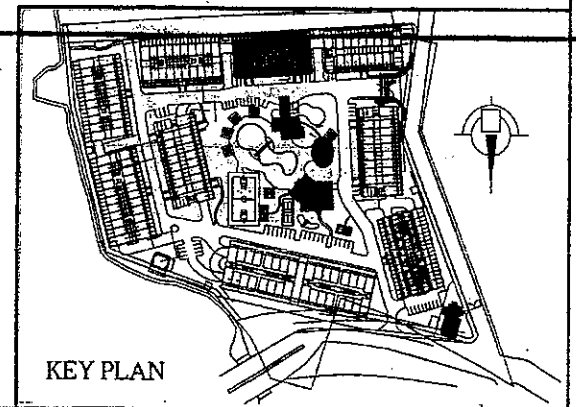
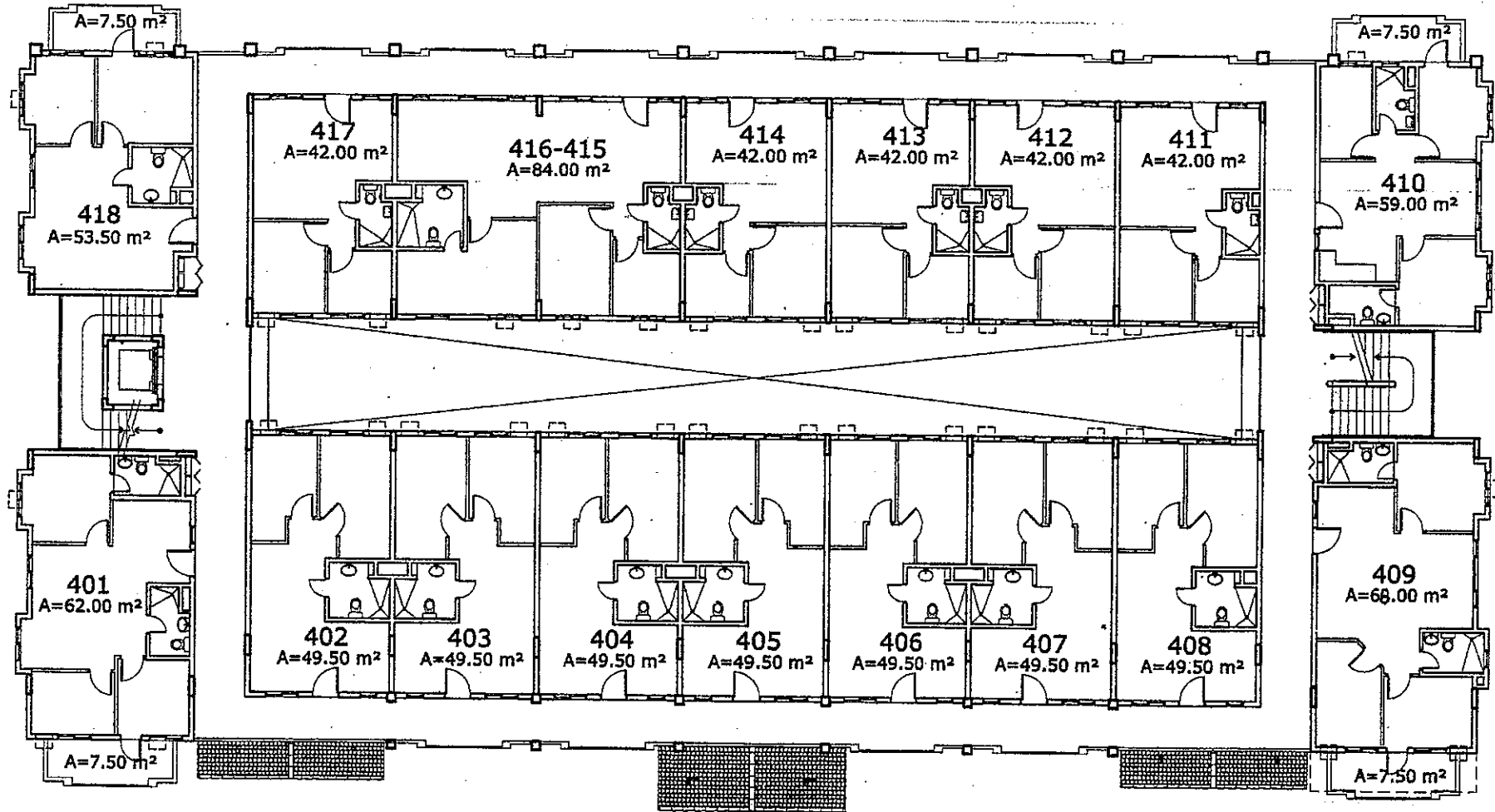
KEY PLAN



D.M. CONSUNJI, INC.
 ENGINEERS • CONTRACTORS
 2281 AASONG TAMO EXTENSION, MAKATI CITY
 TEL. NO.: 841-0841

Rosewood Pointe
BLDG. B - THIRD FLOOR PLAN

13 MARCH 2006 *and JWB*



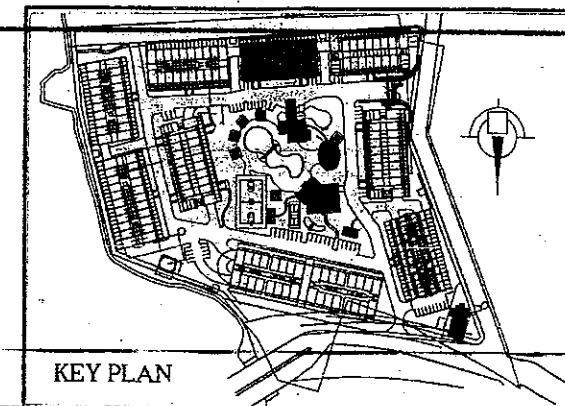
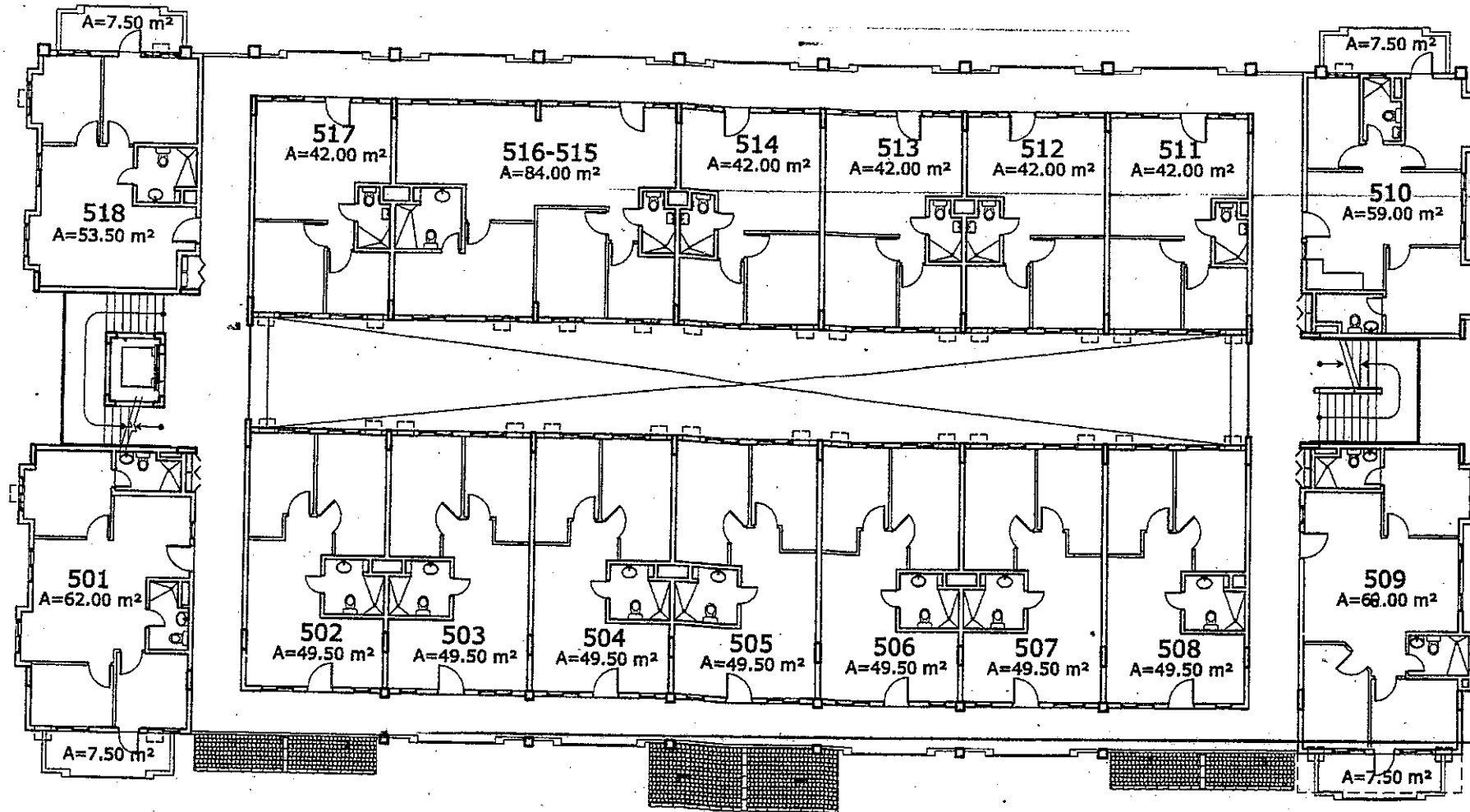
D.M. CONSUNJI, INC.
 ENGINEERS • CONTRACTORS
 2281 AASONG TAMO EXTENSION, MAKATI CITY
 TEL. NO.: 841-0841

Rosewood Pointe
BLDG. B - FOURTH FLOOR PLAN

13 MARCH 2006

ayb gubw

KEY PLAN



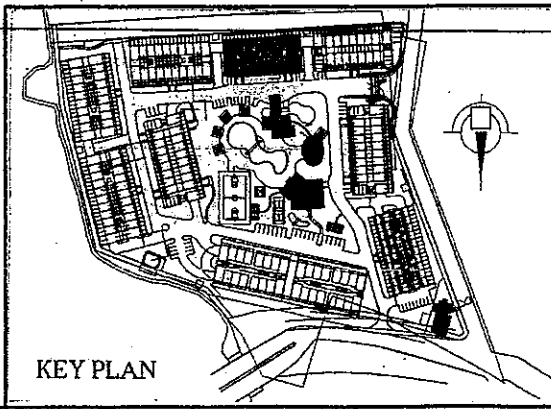
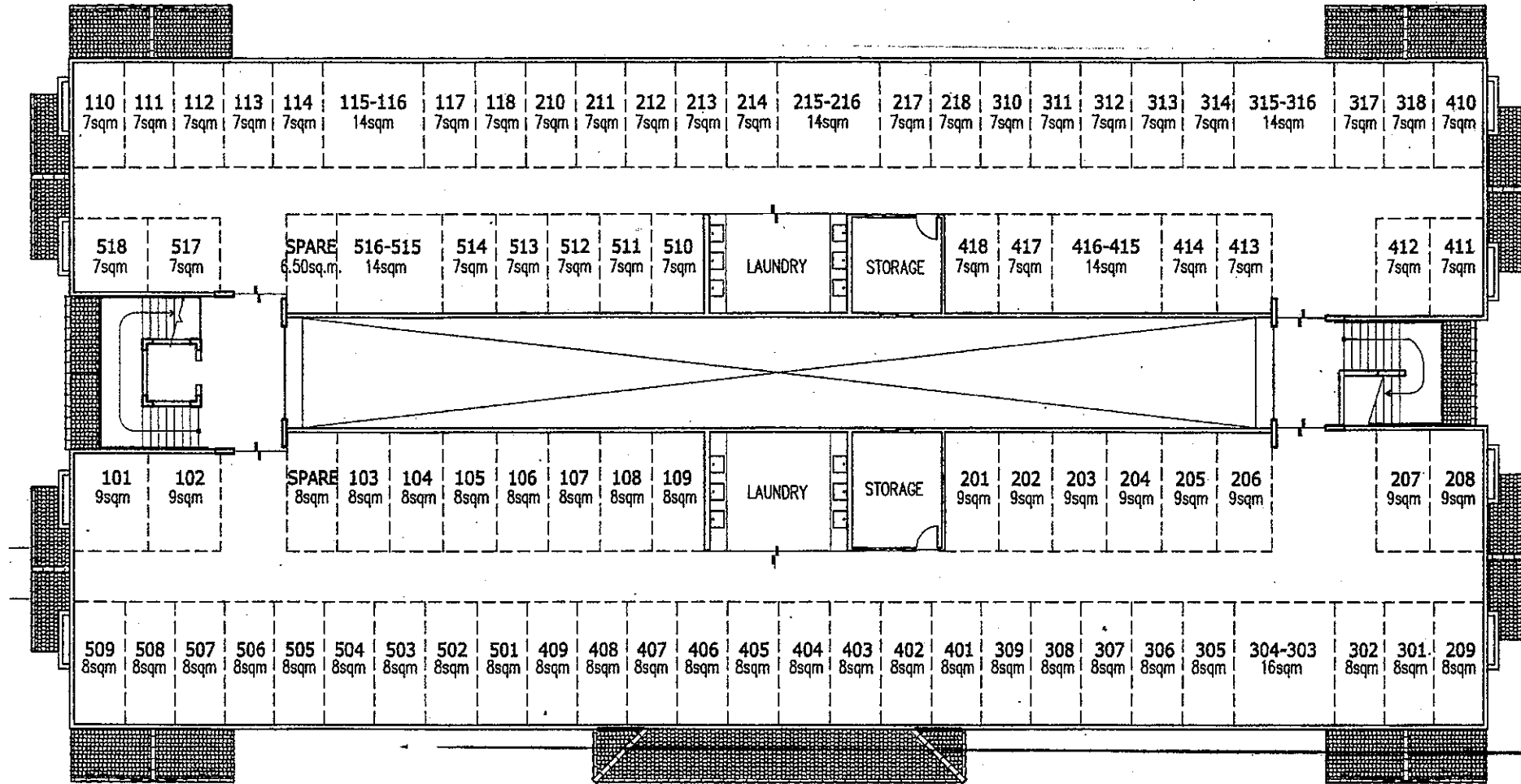
D.M. CONSUNJI, INC.
 ENGINEERS • CONTRACTORS
 2281 AASONG TAMO EXTENSION, MAKATI CITY
 TEL. NO.: 841-0841

Rosewood Pointe
BLDG. B - FIFTH FLOOR PLAN

13 MARCH 2006

all given

KEY PLAN



D.M. CONSUNJI, INC.
 ENGINEERS • CONTRACTORS
 2281 AASONG TAMO EXTENSION, MAKATI CITY
 TEL. NO.: 841-0841

Rosewood Pointe
BLDG. B - ROOF DECK PLAN
 13 MARCH 2006 *AM*