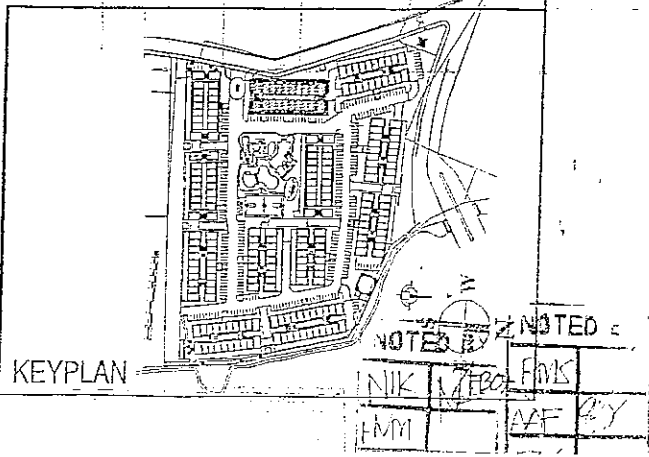
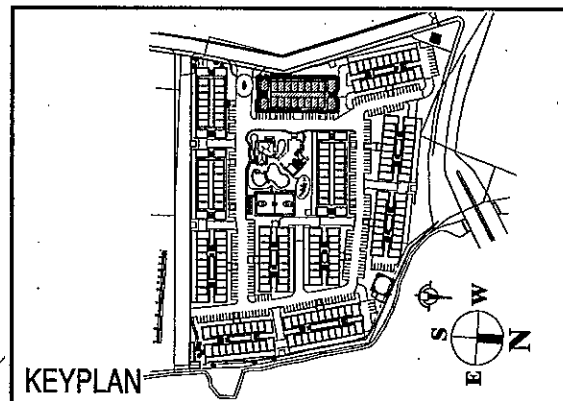
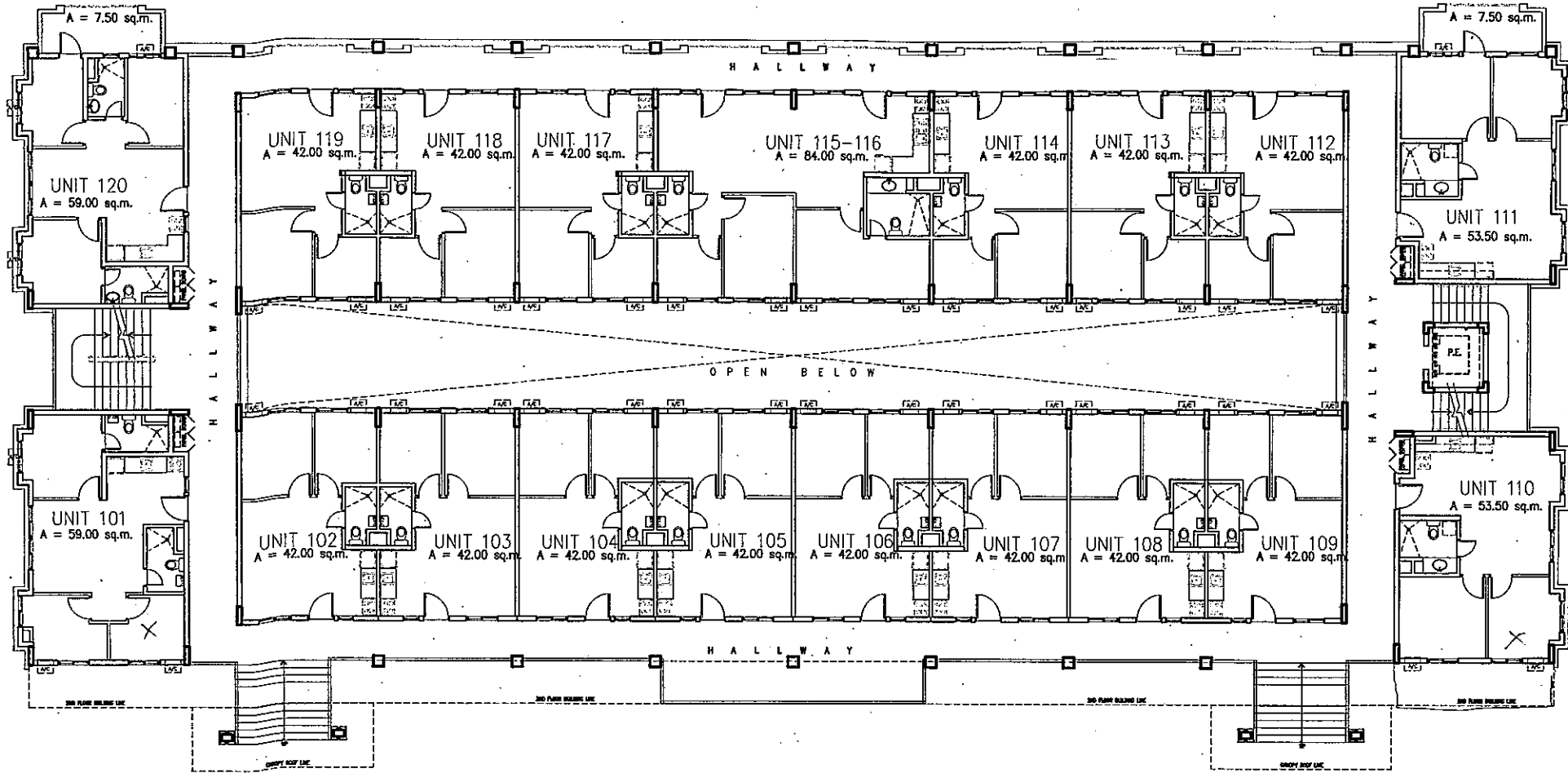

D.M. CONSUNJI, INC.
 ENGINEERS - CONTRACTORS
 2281 AASONG TAWO EXTENSION, MAKATI CITY
 TEL. NO.: 841-0841

Rosewood Pointe
BLDG. I - LOWER GROUND FLOOR PLAN
 09 FEBRUARY 2007 *gln*



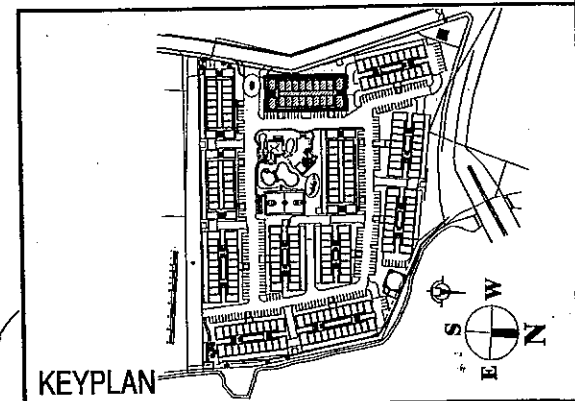
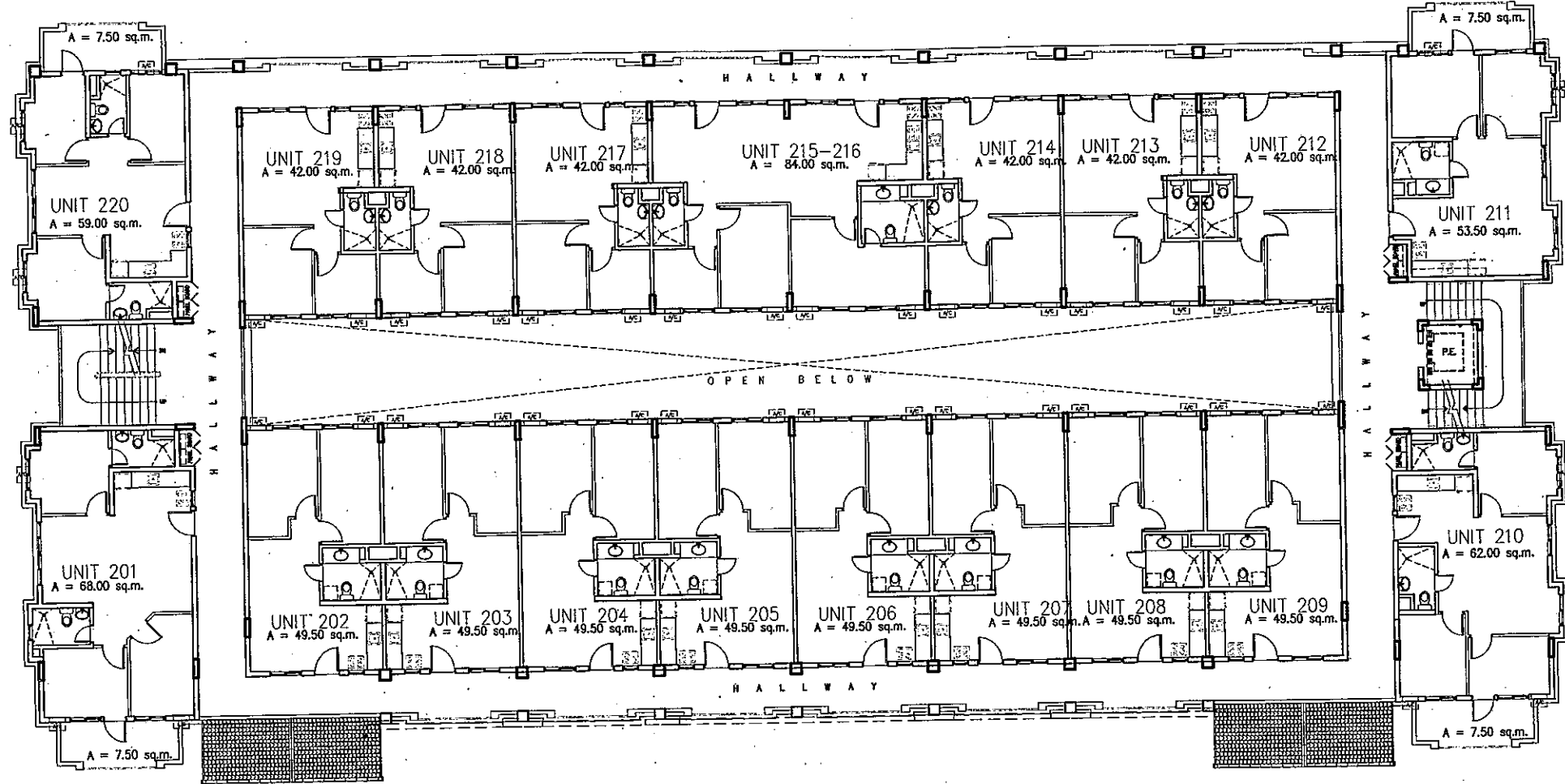


D.M. CONSUNJI, INC.
 ENGINEERS • CONTRACTORS
 2281 AASONG TAMO EXTENSION, MAKATI CITY
 TEL. NO.: 841-0841

Rosewood Pointe
BLDG. I - UPPER GROUND FLOOR PLAN
 31 MARCH 2006

gibson

KEYPLAN

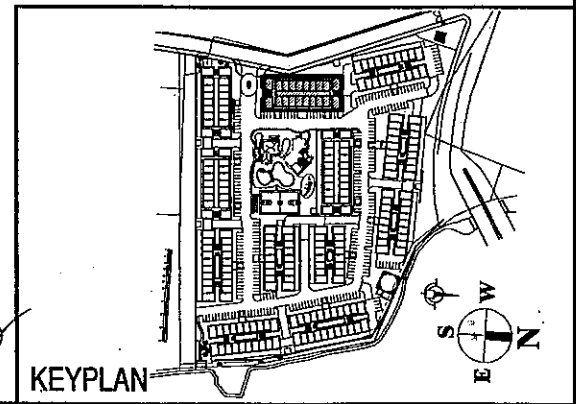
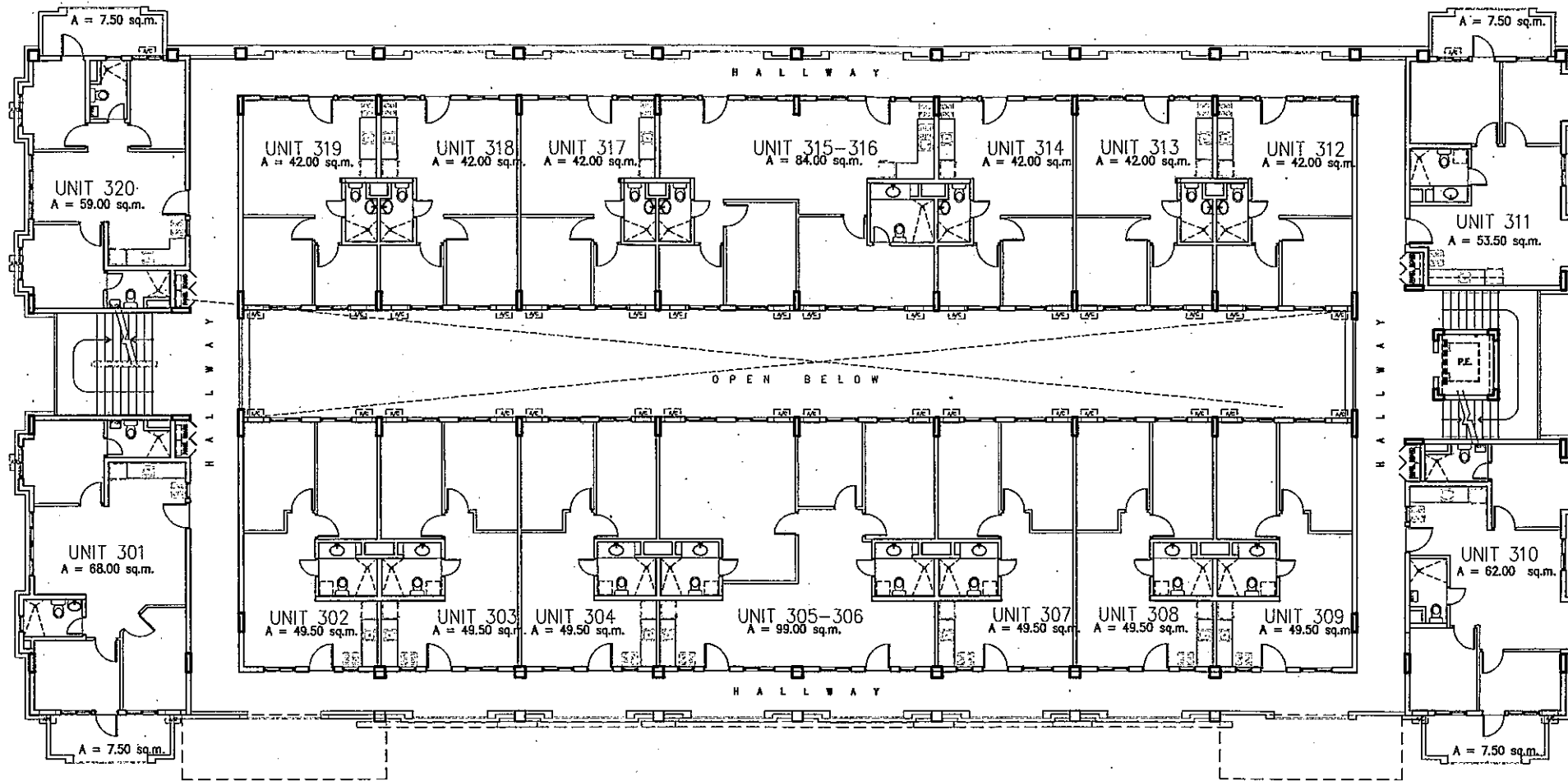


Rosewood Pointe
 BLDG. I - SECOND FLOOR PLAN
 31 MARCH 2006
Wilson



D.M. CONSUNJI, INC.
 ENGINEERS · CONTRACTORS
 2281 AASONG TAMO EXTENSION, WAKATI CITY
 TEL. NO.: 841-0841

KEYPLAN

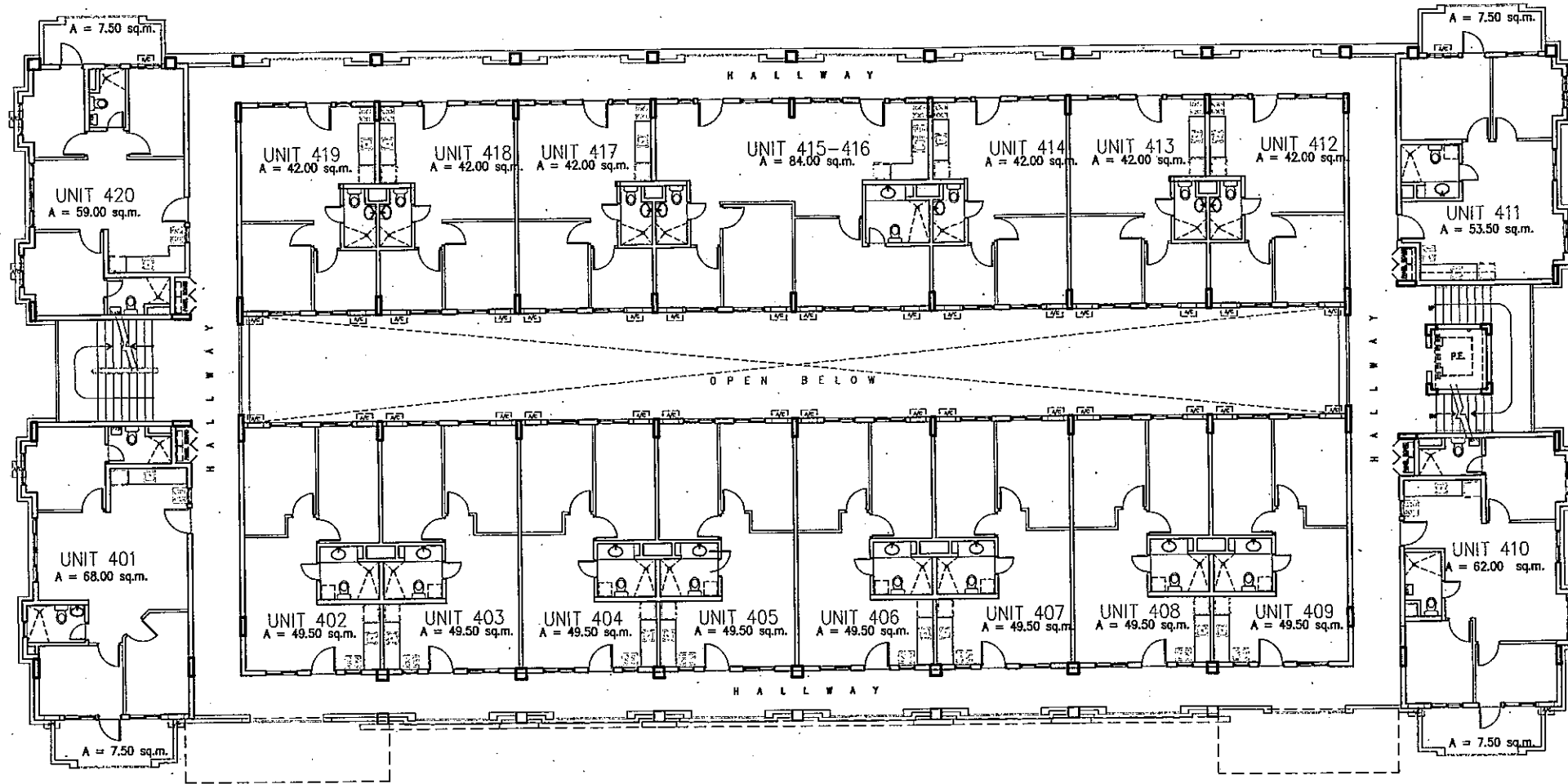


D.M. CONSUNJI, INC.
 ENGINEERS - CONTRACTORS
 2281 AASONG TAMO EXTENSION, MAKATI CITY
 TEL. NO.: 841-0841

Rosewood Pointe
BLDG. I - THIRD FLOOR PLAN
 31 MARCH 2006

Handwritten signature

KEYPLAN

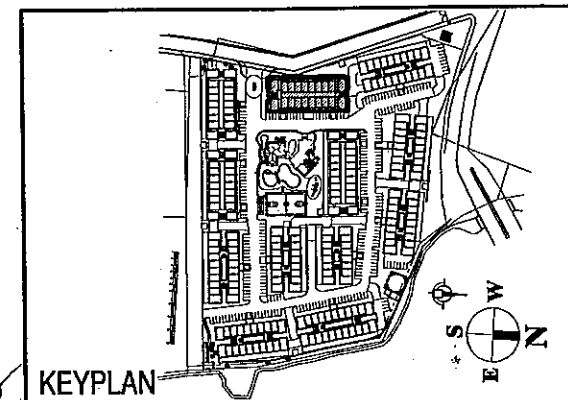


D.M. CONSUNJI, INC.
 ENGINEERS - CONTRACTORS
 2281 AASONG TAMO EXTENSION, MAKATI CITY
 TEL. NO.: 841-0841

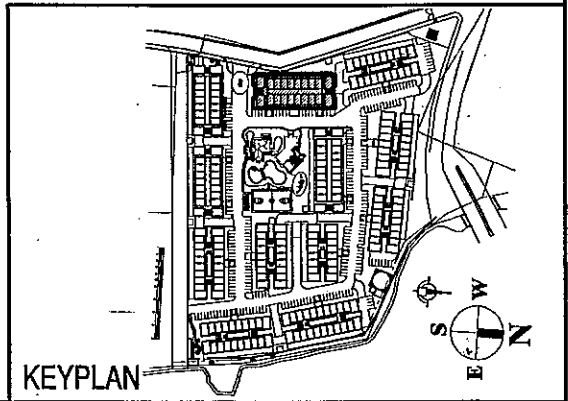
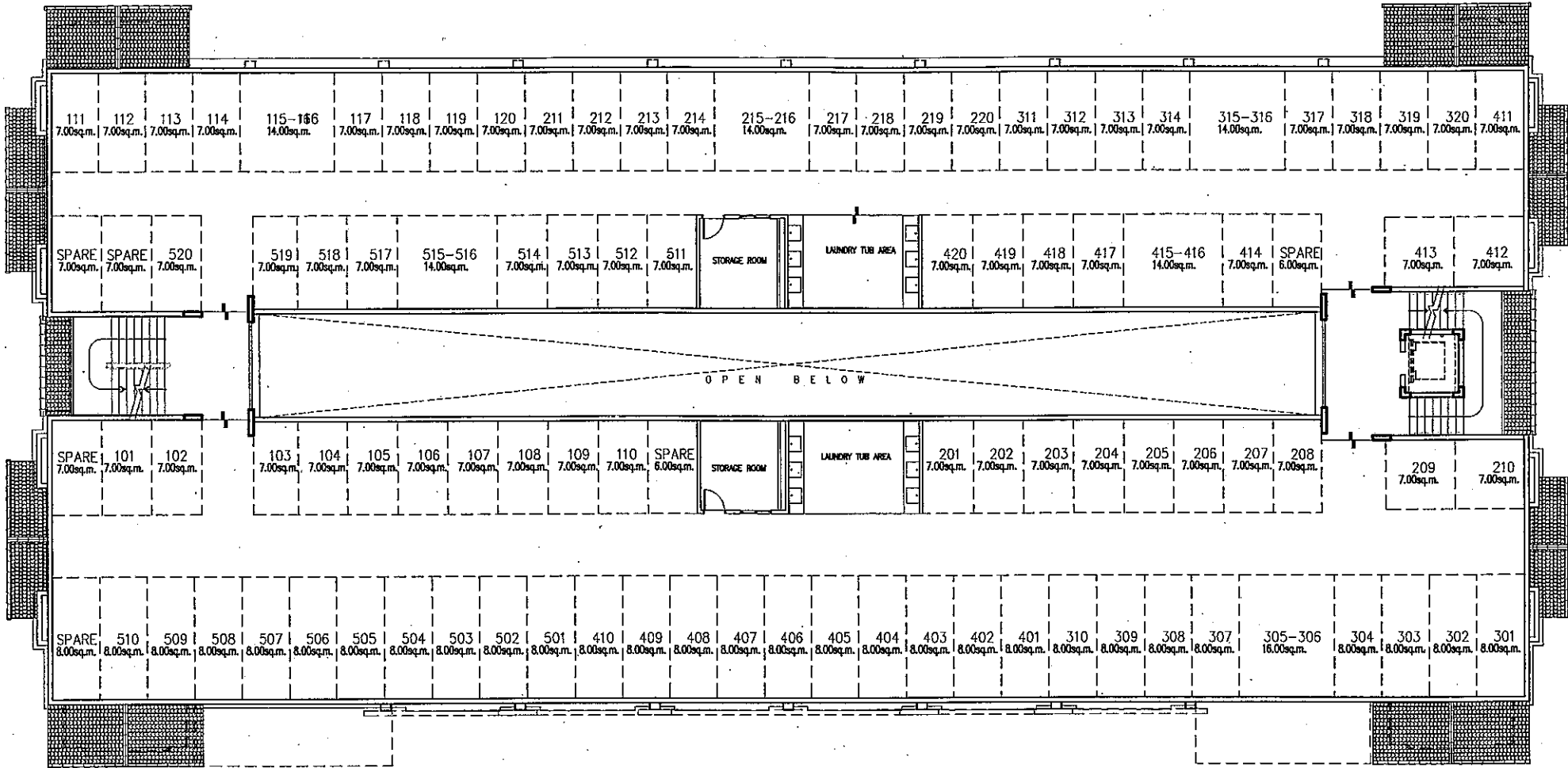
Rosewood Pointe
BLDG. I - FOURTH FLOOR PLAN

31 MARCH 2006

dlb



KEYPLAN



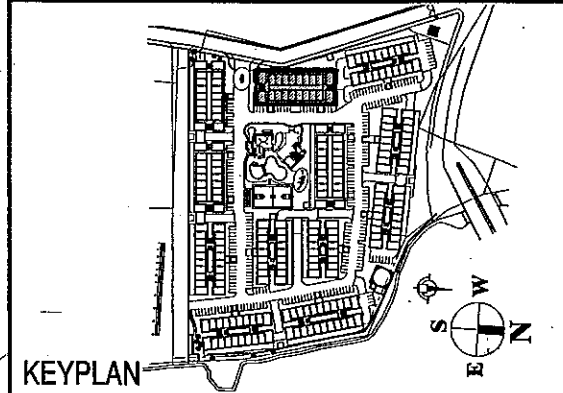
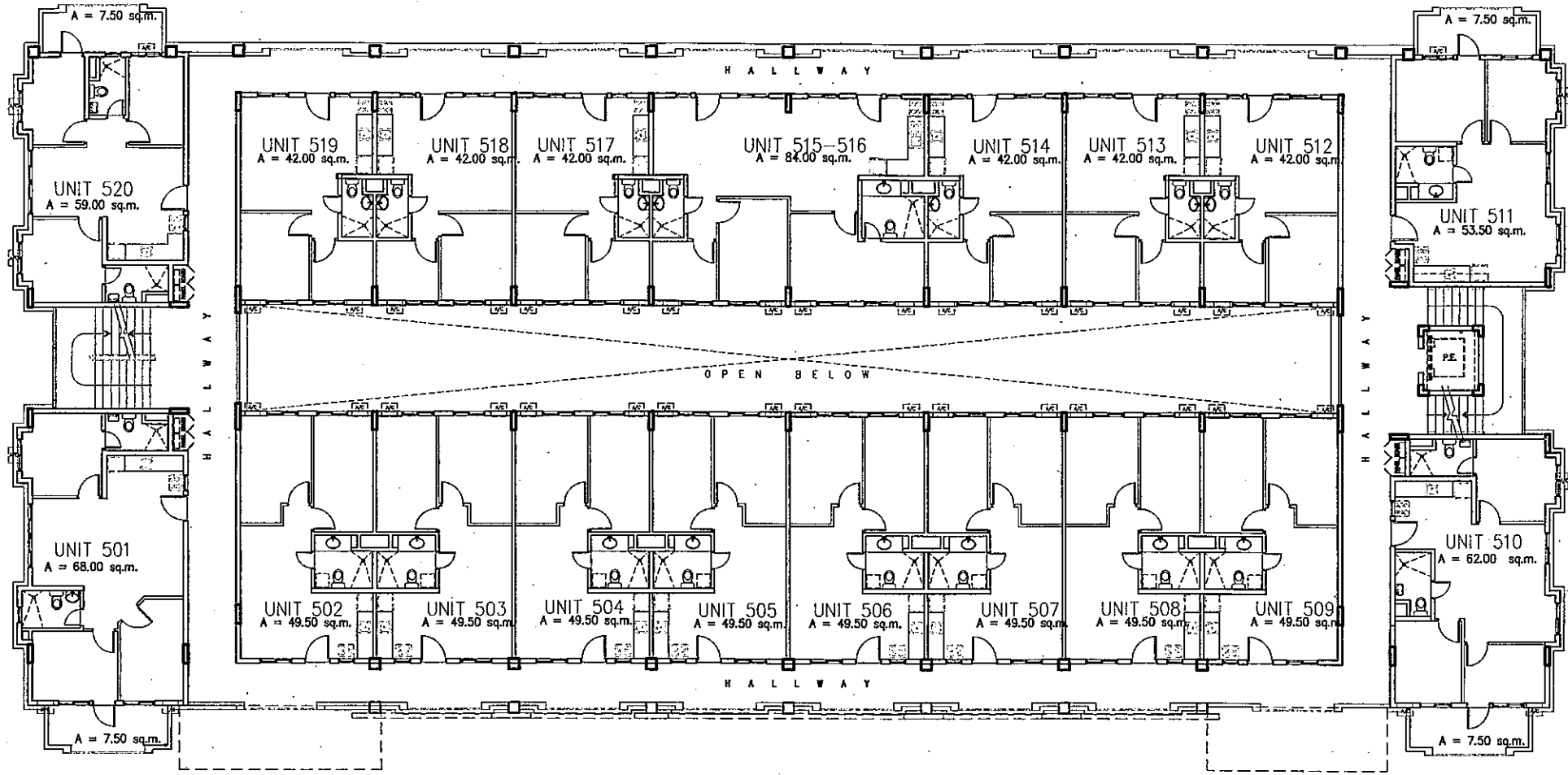
D.M. CONSUNJI, INC.
 ENGINEERS • CONTRACTORS
 2281 AASONG TAMO EXTENSION, NAKATI CITY
 TEL. NO.: 841-0841

Rosewood Pointe
BLDG. I - ROOF DECK PLAN

31 MARCH 2006

Handwritten initials and date: JBN 01/06

KEYPLAN



D.M. CONSUNJI, INC.
 ENGINEERS - CONTRACTORS
 2281 AASONG TAMO EXTENSION, MAKATI CITY
 TEL. NO.: 841-0841

Rosewood Pointe
BLDG. I - FIFTH FLOOR PLAN
 51 MARCH 2006

ENR
copy

KEYPLAN